

totally

NEW FROM
SKYWAY

AERODYNAMIC

bike

The new T/A frame and fork set by Skyway Recreation Products has recently been introduced. It is another version of a seemingly endless array of BMX style frames and forks, but this time with a new twist: The specially produced tubing is totally aerodynamic, making it both neat-looking and very strong. The Skyway T/A, tested by Super BMX.

Story and photos by The Editors



Ron House takes the T/A bike by Skyway around a turn while sporting his new Super BMX uniform. Ron's Skyway bike is equipped a little differently than Andy's.



Andy Patterson, takes his Skyway T/A bicycle skyward during one of our test sessions.



Brian Tochi star of ABC's new television show "The Renegades" was on his way to a date when he got into an accident involving his car. Brian, being a quick thinker, borrowed Super BMX's Skyway T/A bicycle and off he went two wheels are better than none!

Over two years of development has gone into the first frame and fork combo from the folks at Skyway. Their newest products are the Skyway T/A frame and fork, the subject of this month's test article.

"T/A" stands for "totally aerodynamic," and according to Craig Raudman that's exactly what the frame and fork set is: aerodynamic. The only sections on the frame that are not aerodynamic are the bottom bracket and head tube. The balance, if you were to look at a cross-section is tear-drop shaped.

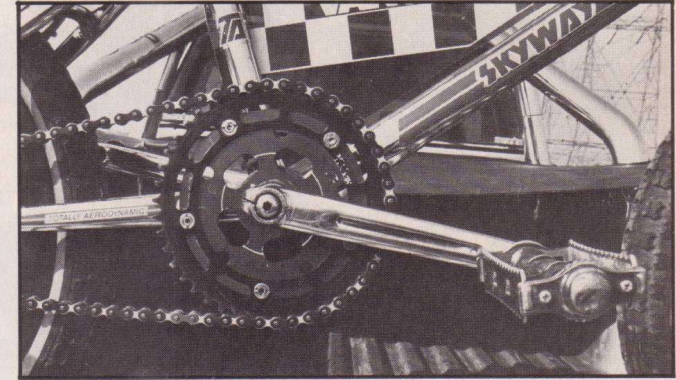
The frame and fork set starts off as round 4130 chromemoly tubing. The tubing is then formed, using dies, into its final aerodynamic shape. The primary reason for the special shape of the tubing is to make it easier to weld and creating a finished product that is stronger than your normal frame or fork.

Skyway has had prototypes of the frame and fork being used by their team members. None of the riders have had any problems with the products. The T/A combo has been on the market for a few months and Skyway has not had any returned for defects.

Together the T/A frame and fork weigh 5.7 pounds and they have a suggested retail price of \$198.00 making them a moderately priced set.

totally AERODYNAMIC bike

Test ridden by Andy Patterson and Ron House.



Redline Flight cranks, KKT pedals, a Pro-Neck Powerdisc, a Shimano chainring and an Izumi chain are used on Andy's bike.

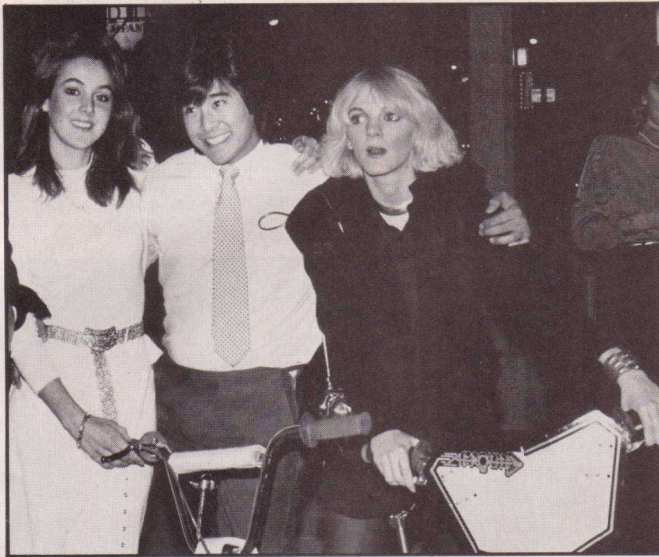
Andy likes the way the T/A handles, "the bike steers quick. It's just a good all-around race bike."





The Skyway T/A frame and fork set only weighed 5.7 pounds, a reasonable weight for racing.

Brian Tochi of ABC's new program "The Renegades" appeared at his date on the Skyway T/A bicycle. To the left of Brian is Victoria Sellers, his girlfriend and on his right is Allison Arngim of "Little House On the Prairie."

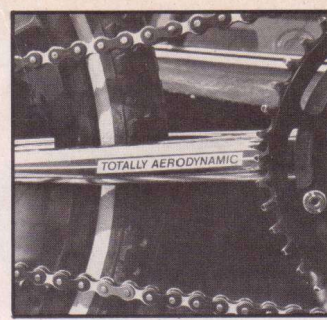


This month we enlisted Andy Patterson and Ron House to give us a hand testing the bike. Andy has been racing on a prototype of the T/A while in its testing stage. The frame/fork combination that Andy now rides is a production model, the same as you would receive if you bought it at your local dealer. The bike that Ron rode was supplied by Skyway. We talked with Ron about the new Skyway: "The bike's dimensions make it feel light. It races a lot faster than it looks."

Patterson spent quite a while riding the bike, putting it through the normal paces. Like his fellow teammates, he has had no problems with the equipment. The T/A withstood quite a bit of unusual thrashing.

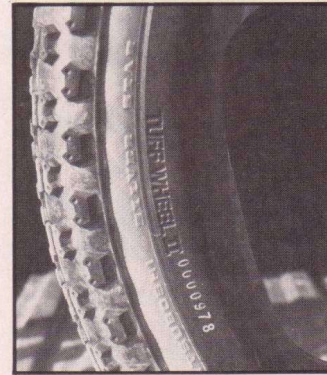
Going around turns the T/A handled quick and was very responsive, easy to maneuver. When Ron wanted to jump the bike it felt light and was easy to pull up. Ron went on to say: "The bike steers quick, I like the way it handles. It's just a good, all-around race bike."

totally AERODYNAMIC bike



Like the sticker says, this bike is "totally aerodynamic."

Skyway Tuff Wheel IIs were used with the T/A frame and forks.



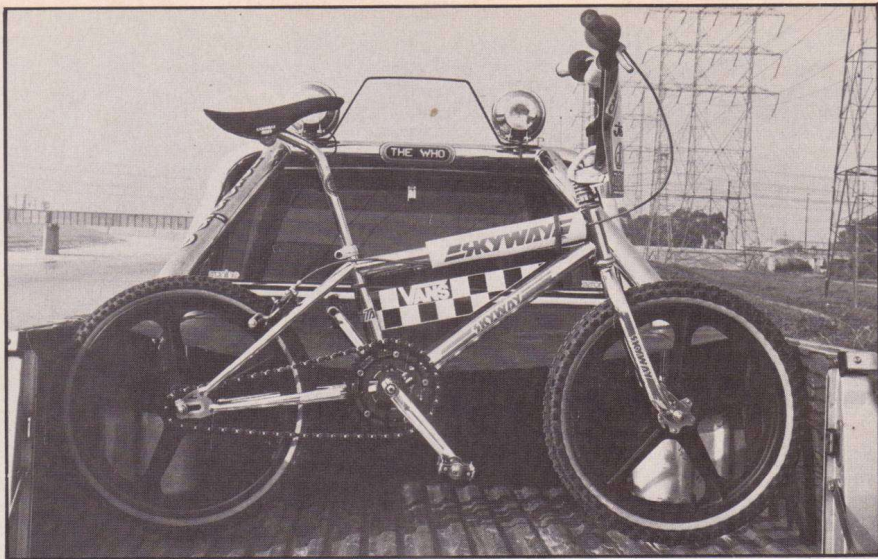
The Skyway bike felt light and was easy to pull up when he wanted to jump it.

Andy shows off his T/A bike and his pickup truck after the test session.

SKYWAY T/A SPECIFICATIONS

- Skyway T/A Frame
- Skyway T/A Forks
- Skyway Tuff Wheels II, black
- Skyway Tuff Pads
- Redline 180mm Flight cranks
- GT Pro handlebar
- DK Stem
- GT seat post
- Sun Tour seat post clamp
- Hadley Bottom Bracket
- Tange headset with a Sun Tour aluminum lock nut
- Pro-Neck Powerdisc
- Shimano chainring
- Sun Tour freewheel
- Shimano Tourney brake, rear
- KKT Pedals
- Comp III tires, 1.75 rear, 2.125 front
- Izumi chain
- Kashimax Aero saddle
- Oakley B1B grips
- California Lite Pads





The complete bike as tested by Super BMX, situated in the back of Andy Patterson's pickup truck.

totally AERODYNAMIC bike

Quite some time has gone into the design and production of this unique BMX machine. If you're looking for a good bike for BMX competition, one that will probably last longer than your interest in racing, you should definitely check out the new Skyway T/A frame and matching fork. ☆

I would like to subscribe to Super BMX Magazine at your new subscriber rate of \$10.99 for 12 issues. I know I will be billed later.

No, I won't want to subscribe, but please accept my entry anyway.

Mail To:
Skyway Bike Giveaway
Super BMX Magazine
7950 Deering Avenue
Canoga Park, California 91304

All entries must be postmarked no later than June 30, 1983. Offer expires June 30, 1983.

Please Print Clearly

Name _____

Address _____

City _____ State _____ Zip _____

Phone Number _____ 5CP3

YOU TOO HAVE A CHANCE AT WINNING

Super BMX is at it again. This time we're giving away a Skyway T/A frame and fork. Plus a set of Skyway Tuff Wheels and a set of Skyway Pedals.

Here's all you have to do:

Fill out the coupon below and get it in the mail no later than June 30, 1983. We will draw one of the

names entered and that lucky person will receive the Skyway Parts. Entries are also acceptable on a postcard with your name, address, city, state, zip code along with a phone number. But only one entry per person will be accepted. There is no purchase necessary to enter this drawing and it is void where prohibited by law.

So if you would like to own this bike, be sure and get your entry in. The deadline is only a few weeks away! Super BMX is the only magazine to give away a complete bike each and every month.



YOUR OUT OF SIGHT TOP SECRET FOR IMPROVED WHEEL PERFORMANCE

You're lined up at the starting gate and going for a holeshot. And the trickiest performance boosters on your racer, your SuperLite tubes, are on your rims and out of sight.

SuperLites will increase the acceleration performance of your racer by reducing its overall weight where it counts the most, in the wheels.

The lighter the wheels are, particularly near your rims, the less energy you'll use to turn them coming out of turns and off jumps.

TIOGA has really reduced weight (see specification chart) and kept SuperLites airtight, making them super right for competition.



To increase the performance of your racer get SuperLite tubes, and remember, keep them out of sight.

TUBE SPECIFICATION CHART			
SIZE	NORMAL TUBE	SUPERLITE TUBE	PERCENTAGE LIGHTER
20x1 3/8	140	105	25.00%
20x1.75	165	120	27.27%
20x2.125	215	150	30.23%
WEIGHT IN GRAMS			

SuperLite

Another fine product from TIOGA Motocross

For more information please contact:
SHIMANO SALES CORPORATION
9259 San Fernando Road, Sun Valley, CA 91350

Outside of the United States please contact:
TIOGA INFORMATION CENTER
P.O. Box 571, Kobe Port, Kobe, 651-01, Japan