



### **RATING THE REDHEAD'S RACING REPLICA**

**Y**a gotta figure that anybody who dates back to the days of Manny's Mudsuckers and Palms Park racing has got to know which end is up. Chuck Robinson is one of BMX's vintage veterans. From Manny's he moved on to Dan Gurney's All American BMX in 1972. Next he started the Webco program and then did the same for DG. Both were highly successful teams. After a short fling with the abruptly aborted LRV effort, Chuck launched Robinson Racing in February 1978.

Robinson Racing, as a smaller company, can remain highly flexible, responding quickly to development input and market demand. A series of geometry changes were pumped into the early production bikes almost instantly. Sort of your basic build it Saturday, test

**BICYCLE  
MOTOCROSS  
ACTION**

**OFFICIAL TEST**

**BOBBY WOODS' MODEL**

# **ROBINSON RACING KIT**





Robinson Racing's Bobby Woods model.

## BOBBY WOODS

### NBA NO. 2 PRO

**AGE:** 17  
**HOME TURF:** Woodland Hills, California

**SPONSOR:** Robinson Racing Products

**CO-SPONSORS:** Vans, Oakley, Go Pro, Terrycable, Premier, Mathauser

**PERSONAL GEAR:**  
Premier Super BMX helmet  
JT visor

Oakley goggles  
Go Pro jersey  
Go Pro pants  
Vans low-cut tennies  
Hatch gloves

One look at the license plate says it all. BMX PRO. That's what Bobby Woods sports on his spoiled, muraled, zoot-scoop campered Datsun pick-up. The blue and white motif is

also seen on his personal race bike. The camper mural is a Hawaii surf scene, fitting for a go-guy who runs a l'd-rather-be-surfing license plate holder. Beside ground poundin', Bobby also pounds skins, the drums, having played in a local band.

Last year Woody gave Anthony Sewell a good fight for top honors among NBA Pros. The berm bogging battle went down to the

year end Grand Nationals.

During the year Bobby also scored a triple at the NBA Summernationals. But a win in 1979 was probably his biggest. Yep, Indy. 1979 Pro world champion—a reet pateet complete concrete feat.

The torrid torch top (or dreaded redhead) has been racing for about three and a half years, the last two and a half for Robinson Racing. He earned #16 in the NBL and #25 in the ABA while concentrating most of his effort on acquiring the NBA deuce.

Bobby also mingles with headliners away from racing. His school, Valley Professional, is cool for somebody in his pro-



Bob Woods' plate. Hot idea.

fession. Most of the students are in the entertainment industry. At Valley the program allows students to miss classes to film a movie or hit a race or two.

Woody's classmates have included Kristy McNichols (of *Family*), some of the gang from *Little House on the Prairie*, Michael Jackson's sister, Jan, and world champion figure skaters Tai Babilonia and Randy Gardner.

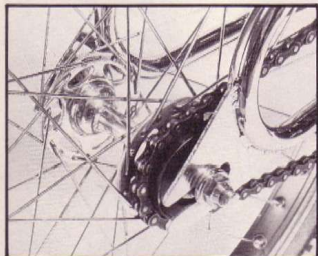
Bob is committed to a racing career, but at some point in the future he may switch from pedals to motors. Not motorcycles, but formula type autos. This year he plans to attend Jim Russell's driving school in Canada. Top students receive scholarships that can lead to racing careers.

Rattrap pedals or pedal-to-the-metal, the BMX PRO is one racer who can see the forest for the trees, tell the lumber from the... aw, just say that Woods delivers the goods. ■



On a humongous downhill like this you REALLY find out how a bike handles. The Robinson hung in there. That's Buff hittin' about warp 4 and Len Weed recording it for posterity.





Shimano track hubs, Sedis 3/32 chain.

it Sunday, and sell it Monday approach. That's a luxury the big manufacturers often don't have.

Robinson Racing offers two frame and fork kits. They also sell chromoly bars, safety pads, riding gear, hats, and t-shirts.

The SC model, named for Spear-chucker Caballero or former teamster Scott Clark, features a European bottom bracket.

The Bob Woods model sports an American bottom bracket.

Front triangle geometry on both bikes is identical. The SC model is 7/8-inch shorter in the rear triangle and also a half pound lighter because of the European bottom bracket.

For this kit test we tackled terrain on a totally Woodified Woods model. In fact, Bobby's own racer and practice bikes got the work out.

Assorted Nurd Herd words: "It looks hot." "Those big tubes—it looks strong." "The size was perfect." "It felt fast." "It slid good and stopped good."

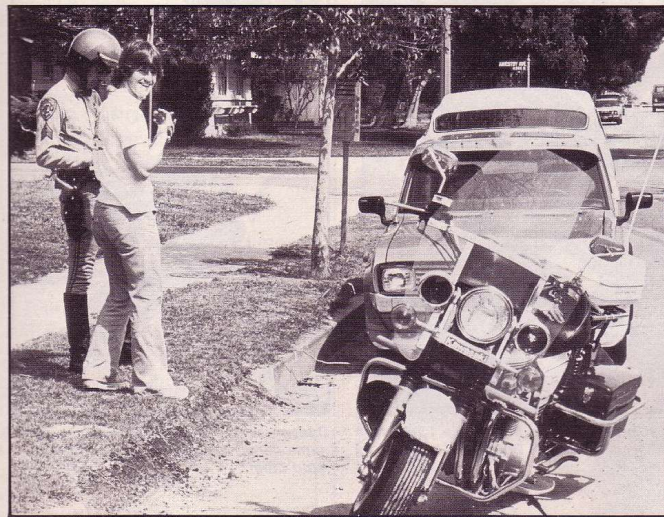
The BW definitely slid and stopped good. It had to—or else scratch the real BW or a highly expendable Her-



Full wick clicker after blasting up a twenty foot climb.



No time for slumber when the heavy lumber lets loose. Woods in flight.



The long arm of the law getting the goods on Woods—tinted glass, no windshield wipers (stored inside to deter smog rot), and no front license plate (a Rush name plate in its place). Bob got a fixit ticket heading out to our testing site. Another blow struck against juvenile delinquency.



Hi, mom. What's for dinner?

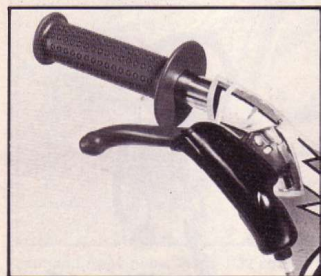
der. During the photo session Buffy and Bobby were racing downhill shoulder to shoulder, bolder and bolder, before locking up the binders and swooping into a big ninety degree slider to just miss plummeting off a twelve foot vertical plunge. Such a disasterous descent would have given eating dookie new meaning. 'Course there was the time Mike missed his line on the other side of a blind jump and went into a ditch, but . . . Anyway, when you're sliding to save your life—which is rapidly flashing before your eyes—you can check out a bike's geometry real attentively.



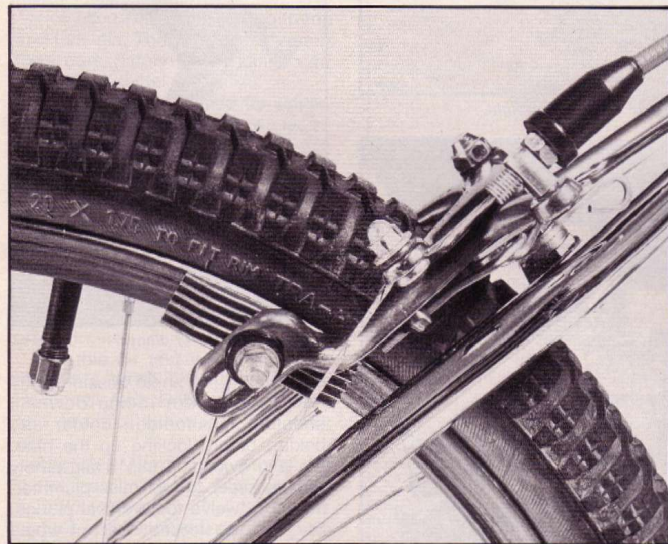
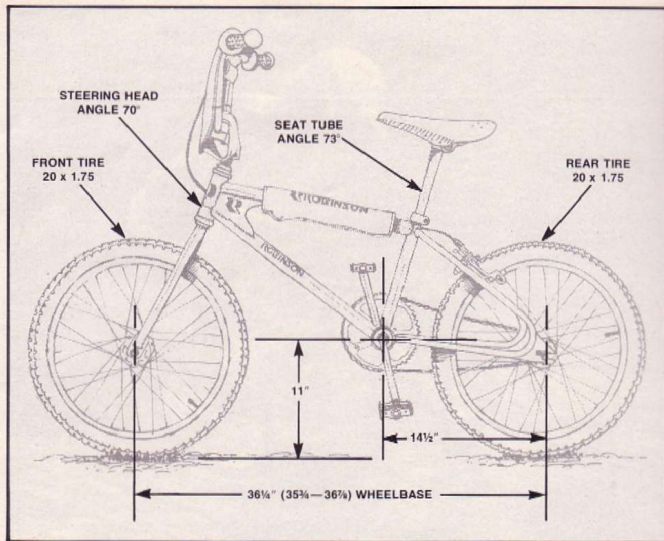
# ROBINSON

All in all, the Woods model performed as strongly as it looks. Those humongous tubes make for one solid hunk of motion machine, and they're angled together with technical trickery. The bike's light, too—a full pound and a half lighter than a Supergoose.

You don't see mobs on Robin-



The Terry cable brake cable comes with a rubber crud protector. Oakley .5 grips. Weinmann brake lever.



A rubber snagger sanitizes the end of the Terry cable brake cable. Mongoose 1.75 rear rubber. Shimano-Tourney sidepull caliper. Mathausser brake pads. Blue caps on the valve stems add spiff.



Doesn't everybody have their very own name decal? Woods runs a Mongoose Gold Stem.

son frames, but you do see some quick clickers. That's the plan. Quality race bikes put together with serious racing input by a guy who's

one of the original yahoos of BMX bike building. Robinson machinery appeared in the top ten of the what-brand-will-your-next-bike-be

query in last year's BMX Reader-Survey. Even though the company is small, it's definitely on the ball for those who choose to haul. ■

## ROBINSON RACING KIT BOBBY WOODS MODEL SPECIFICATIONS\*

**FINISH:** Show chrome.  
**WEIGHT:** 25 pounds (including three pads and number plate).  
**Frame:** four pounds, two ounces. **Fork:** one pound, eight ounces.

**RETAIL COST:** Approximately \$130 for frame, \$44 for fork, \$24 for handlebars.

**FRAME:** Robinson Racing Bobby Woods model, 4130 chrome-moly.

**FORK:** Robinson Racing, 4130 chrome-moly, centerline axle.

**HEADSET:** Takagi.

**STEM:** Mongoose Gold Stem.

**HANDLEBARS:** Robinson Racing, 4130 chrome-moly.

**GRIPS:** Oakley .5 with Mud and Crud Plugs.

**RIMS:** Araya 7X aluminum alloy.

**SPOKES:** .080/36.

**HUBS:** Shimano track hubs, series 10 axles.

**BRAKES:** Shimano-Tourney sidepull caliper (rear only); Mathausser pads, Weinmann brake lever, Terry cable brake cable.

**TIRES:** Mongoose 1.75 (rear) and Leo Super MX 1.75 (front).

**PEDALS:** KKT.

**CRANKS:** Takagi MX 170mm, one-piece.

**FRONT SPROCKET:** 44T, Shimano chainwheel, Takagi spider.

**REAR SPROCKET:** 16T, Shimano freewheel.

**BOTTOM BRACKET:** Tange.

**CHAIN:** Sedis 3/32.

**SEAT:** Mongoose (by Kashimax).

**SEAT POST:** Race Inc., 4130 chrome-moly.

**SEAT POST CLAMP:** Sun Tour (buffed).

**NUMBER PLATE:** Haro.

**ACCESSORIES:** Robinson pads.

**MANUFACTURER:** Robinson Racing Products  
7017 Irondale Avenue  
Canoga Park, California 91306  
Tel: (213) 992-0247

\*Components listed are those on Bobby Woods' personal bike.

# BAUER

CYCLE SUPPLY INC.

SE RACING  
PK RIPPER • QUAD ANGLE

Tange Sun Tour D&C

ARAYA

SHIMANO TUF WHEELS

TUF-NECK WEBCO

RACE INC.

GRAB ON TORNER OKLEY

BAUER CYCLE SUPPLY INC.  
404 Third Ave. North, Minn., MN 55401  
OUT OF STATE CALL (800) 328-8320  
MINNESOTA CALL (612) 333-2581

DEALERS ONLY PLEASE

## "Prismatic" HOT ROCK STICKERS

AC/DC

RUSH

LED ZEPPELIN

THE STONES

Queen

ALSO AVAILABLE: Boston, Styx, Fleetwood Mac, Bad Co., Eagles, Kansas, Chicago, Kiss, Santana, and Disco Sucks.

## NEW! PUNK ROCK BUTTONS

DEVO BEATLES LED ZEPPELIN

ALSO AVAILABLE: B-52's, Elvis Costello, Police, Cheap Trick, Punk Rock, The Knack, The Who, Jimi Hendrix, Queen, Pink Floyd, Ramones, Specials, The Cars, Beatles, Clash, The Pretenders, Stones, AC/DC and many more!

Send 50¢ for each Sticker or Button, or \$3 for any 7, with your order to:

FREE CATALOG with order  
BMX ROCK  
6220 Whittier Blvd.  
Los Angeles, CA 90022

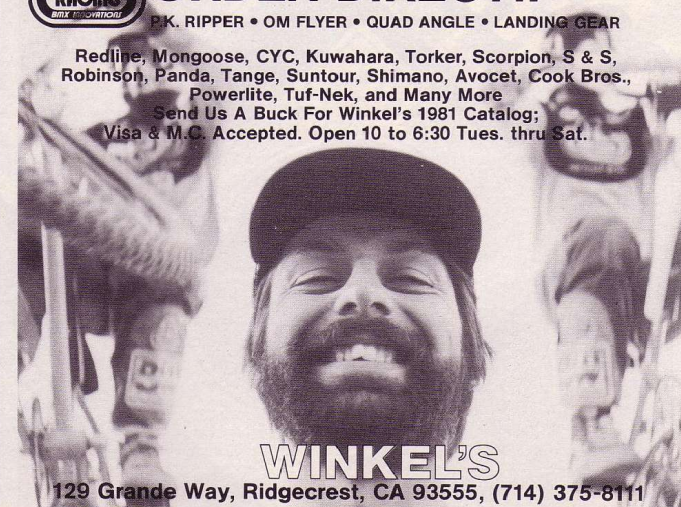
DEALER INQUIRIES INVITED

# WINKEL'S BUILDS WINNERS ORDER DIRECT!!



PK. RIPPER • OM FLYER • QUAD ANGLE • LANDING GEAR

Redline, Mongoose, CYC, Kuwahara, Torker, Scorpion, S & S, Robinson, Panda, Tange, Suntour, Shimano, Avocet, Cook Bros., Powerlite, Tuf-Nek, and Many More  
Send Us A Buck For Winkel's 1981 Catalog;  
Visa & M.C. Accepted. Open 10 to 6:30 Tues. thru Sat.



WINKEL'S

129 Grande Way, Ridgecrest, CA 93555, (714) 375-8111