

# KUWAHARA LASER LITE

Testing Clint's World Championship bike



Check out that flight pattern! The Laser Lite flies straight as an arrow, speed jumps like a gazelle, and does it all with the greatest of ease. That number one on the plate says it all.

Besides being the choice of Kuwahara team captain and World Champ Clint Miller, the top-of-the-line Laser Lite is also the mount of teammates Gary Ellis (left) and Curt Gardner. The Laser is definitely a bike for the BIG boys!

□ It's not every day that a BMX manufacturer can lay claim to having the World Championship BMX bike in its particular line of bikes. It is also not

every day that the diabolical *BMX Plus!* test crew gets its hands on such a bike. But we knew the day would come. Sooner or later. Hopefully sooner. Well, the wait is over; we've got the bike. But just as we were feeling smug, sitting on top of the world on what we thought was a super-trick factory one-off, we found out that anybody, not just magazine test riders and World

Champs, could buy one. The very same bike that rocketed Clint Miller to his title of IBMXF Pro World Champion in 1983! It's just not fair! It's too fair! It's the Kuwahara Laser Lite dream machine. **WHAT DOES IT COST TO RIDE A WORLD CHAMP'S BIKE?**

First off, Kuwahara's top-of-the-line Laser Lite is a big-league BMXer with an equally big-league price tag: \$450. Before you run for cover, you ought to



# VANS THE #1 BMX SHOE



MARTIN APARIJO

STU THOMSEN

WOODY ITSON

New for you from VANS® PATENT #D251,937



## ANKLE GUARDS

HAVE PLENTY OF PADDING FOR PROTECTION WHERE YOU NEED IT. THEY COME WITH EASY VELCRO TYPE FASTENERS.

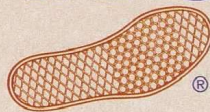
## SIZES

SMALL, MEDIUM, LARGE

## COLORS AVAILABLE

BLACK & WHITE CHECK  
RED & WHITE CHECK  
BLUE & WHITE CHECK  
RED, BLACK & WHITE TRI-CHECK  
SOLID RED  
SOLID NAVY

# VANS®



ANAHEIM, CA  
(714) 974-7414

FOR MORE INFORMATION ASK YOUR LOCAL VANS® DEALER OR YOU MAY WRITE TO VANS® Dealer Inquiries Invited Except In So. Ca.

## KUWAHARA

know that at that price the Laser Lite is a steal. A steal at \$450? Sure, buddy. Everybody's got that much to spend on a BMX bike, right? Wrong. The only people who are willing to spend that much for a BMX bike are top-level experts and pros. If that's not you, stop reading. Don't waste your time. The Laser Lite is for heavy-hitters only. As Kuwahara's team manager Craig Kundig puts it, "The Laser Lite is an excellent race bike for anybody 14 years or older. Everybody on our team rides one: Clint, Gary, Curt Gardener. It's the ultimate ready-to-race bike. If I had an unlimited budget, I don't know what I'd change on it. It's ready to go. It's ready to win the pro class as is!" Now that's a pretty heavy claim coming from somebody who knows. Let's look into this bike a little closer.

### WORLD CHAMP CHASSIS

The heart of the Kuwahara Laser Lite is its 100-percent 4130 chromoly frame/fork/bar/seatpost combo. That's right, 100-percent 4130. Would you expect any less from a pro-level chassis? Should you? Nope.

If you stand back and take a look at the assembled Laser Lite, you'll immediately notice that sizewise, it's been designed for the 13-year-old-and-over set. It features a full-size frame and fork, laid-back post, "pro-style" nine-inch-rise bars, and 180mm cranks. Add it all up and there's plenty of room to move around on the Laser Lite.

A close look at the frame and fork will reveal ovalized top and down tubes as well as fork legs. Tube finish as well as fit is outstanding, as is the chroming. An even closer look will bring out stuff like knurled rear drops, fine weld beads and assorted stamped Kuwahara logos here and there. Make no mistake, the Kuwahara factory in Japan is doing its job. The Laser Lite chassis got the thumbs-up in all areas from fabrication to finish. Nice work. Nice chassis. We wouldn't expect any less from Kuwahara.

### CHAMPIONSHIP COMPONENTRY

If you think the frame and fork are sano, wait till you check out the goodies that the Kuwa factory bolted on it: RedLine 180mm Flight cranks, Sugino sealed-bearing bottom bracket, SunTour sealed hubs, Araya 7X rims, IRC tires, Dia-Compe brake, Elna saddle, SunTour XC-II pedals and alloy stem. The list goes on, but the cash register stops ringing. For \$450 the Laser Lite offers you far more componentry than we thought possible. If we'd had to guess the suggested retail price, we would have said anywhere from \$500 to \$550! Trick stuff here at a fraction of the cost.

The only weak links we found in the



Kuwahara designed the Laser Lite for the big and burly. In stock form with the big-guy, nine-inch-rise bars, laid-back post and 180mm cranks, everyone but the Incredible Hulk will find all sorts of room to roam.

Yep, it's true. Miller's killer World Championship mount is pretty much a box-stock Laser Lite. Other than a few minor changes here and there, the bike you can buy is the same one Clint is flying here!



# KUWAHARA

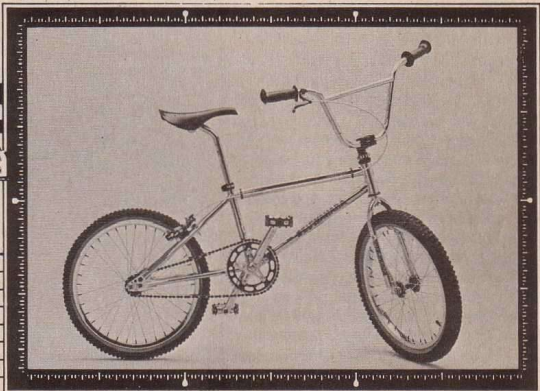
total Laser Lite package were the bad-joke OGG vinyl grips, good-but-not-great steel headset, and the absence of a front brake. Other than that, the boys at Kuwahara have got you covered in style. With the addition of a front brake, upgraded alloy headset and a better pair of grips, the Laser Lite would be an absolute *killer*. As far as buck-for-bike goes, we feel that the Kuwahara is a high-end "best buy." With the simple updates we've mentioned, the Laser Lite would bury the competition. Great componentry. You're getting way more than you're paying for here. **RIDE OF CHAMPIONS**

After we marveled over the Laser Lite's finely finished frame and fork and discovered its more-than-meets-the-pocketbook componentry package, it was time to get down to the riding end

of our test. In other words, the fun part. On the track the Laser Lite again welcomes the bigger rider with open arms. Power position is set up for riders over five feet tall up to about six feet. Normally we don't find that wide of an ergonomic range on bikes we test, but the Laser Lite seemed to feel good to just about any and all within that size category. While some smaller riders would have preferred a straight seatpost and different stem, most felt that they could learn to live with a Laser Lite in stock trim. And that's good news. It shows that the top-of-the-line Kuwahara is a comfortable and forgiving mount. Able to accommodate a variety of riders and riding styles. Originally we had thought that the Laser Lite would be a specialized, almost skittish-behaving pro bike with little or no time for anyone except its intended top-notch pilots. Instead, the Laser Lite proved to be a fast-paced yet mild-



Up front the Laser Lite has everything you need to do the deed: 4130 chromoly bars, SunTour alloy stem, Tech 3 lever and SunTour Head-Lock-Up. The only weak places on the whole bike are the OGG vinyl "skin-eater" grips and the not-up-to-par headset. Other than that, head for the track!



## BMX PLUS!

1. **Bike:** Kuwahara Laser Lite, 20-inch complete bike.
2. **Age range:** 13 years old and over.
3. **Country of origin:** Japan.
4. **Intended use:** Racing/high-performance street/trail.
5. **Wheelbase:** 36 1/8" to 37 1/8".
6. **Bottom-bracket height:** 12 1/8".
7. **Chain stay length:** 15 1/2".
8. **Steering head angle:** 73°.
9. **Seat tube angle:** 74°.
10. **Frame:** Kuwahara 4130 chromoly throughout. Features ovalized top and down tubes, knurled rear drops, 4" head tube, chrome plated.
11. **Fork:** Kuwahara 4130 chromoly throughout. Features ovalized legs, leading-axle design, drilled for caliper.
12. **Rims:** Araya 7X alloy.
13. **Spokes:** 36/080 chrome plated.
14. **Hubs:** SunTour, sealed bearing, low flange.
15. **Tires:** IRC Z-1 Racer 80X skinwalls, 20 x 1.75 rear, 20 x 2.125 front, 45-55 psi.
16. **Cranks:** RedLine Flights, 4130 chromoly, 190mm.
17. **Pedals:** SunTour XC-II.
18. **Chain:** Izumi, 1/2" x 1/8".
19. **Bottom bracket:** Sugino, sealed bearing.
20. **Front sprocket:** Sugino, 44T, alloy.
21. **Freewheel:** SunTour 16T.
22. **Brakes:** Dia-Compe MX-900 caliper with Tech 3 lever, rear only.
23. **Headset:** Steel, retained ball w/SunTour Head-Lock-Up.
24. **Stem:** SunTour, alloy.
25. **Handlebars:** Kuwahara, 4130 chromoly, 27 1/2" wide, 9" tall.
26. **Grips:** OGG vinyl.
27. **Seating:** Elina Aero-Turbo plastic w/Kuwahara 4130 chromoly laid-back post and SunTour alloy clamp.
28. **Miscellaneous:** N/A.
29. **Overall weight:** 23 1/4 lbs. without pads or plate.
30. **Approximate retail price:** \$450.
31. **For additional information contact:** Everything Bicycles, 23145 Kashiwa Court, Torrance, CA 90505; (213)325-6300.



What more could you want? RedLine Flights, SunTour XC pedals, Dia-Compe braking, Araya rims, IRC skins, and Elina seating are all standard. The only question is, are you man enough to put them through their paces?

# NBL

# SCHWINN

# Levi's

## GRAND NATIONAL



# 1984

### PRACTICE/ RACE DATES:

Fri., Aug. 31  
(ALL DAY PRACTICE)

Sat., Sept. 1  
(RACE DAY)

Sun., Sept. 2  
(RACE DAY)

**RAIN  
DATE**  
MON., SEPT. 3

**PRO  
PURSE**  
**\$18,000**  
\$7,000—A PRO  
\$5,000—B PRO  
\$4,000—PRO CRUISER  
\$2,000—PRO AWARD

## E.P. "TOM" SAWYER STATE PARK DERBY CITY BMX, LOUISVILLE, KY

### PRE-REGISTRATION ONLY

All registrations must be postmarked **no later than August 17, 1984. NO EXCEPTIONS.**

Please make **MONEY ORDER ONLY** payable to National Bicycle League and mail to NBL, 84 Park Avenue, Flemington, NJ 08822

For more information call (201) 788-3800.

### NBL REQUIREMENTS:

NBL Membership. Amateurs raced in 5 W.O.S. Pros raced in 10 W.O.S.

PRACTICE ALL DAY FRIDAY

Check in Friday 12:00 P.M. to 6:00 P.M. at E.P. "Tom" Sawyer State Park only.

### HOST HOTEL:

**RAMADA INN EAST** (\$36/night)  
1-64 at Hurstbourne Lane, Louisville, KY

Room blocks are also being held at:

Breckinridge Inn (\$36/night) Sheraton Inn East (\$37/night)  
Howard Johnson's (\$36/night) Skylight Inn (\$32.95/night)  
Knight's Inn (\$31.50/night) Plaza East Inn (\$36/night)  
Red Roof Inns (\$23.95 to \$32.95/night)

To secure these rooms at these rates, make reservations with the Louisville Convention and Visitors Bureau, 226 W. Muhammad Ali Blvd., Louisville, KY 40402, (502) 584-2121, by August 15.

### DIRECTIONS TO TRACK:

North on Hurstbourne Lane (under I-64). Go 1.5 miles to Shelbyville Rd./U.S. 60. Turn right onto Shelbyville, go 1/2 mile to light at Dorsey Lane, turn left and follow Dorsey for three miles until it ends at LaGrange Rd. Turn right onto LaGrange. Go 2/10 mile, turn left onto Hounz Lane. Follow Hounz 1.2 miles to light at Westport Rd. Go 7/10 mile to sign for E.P. "Tom" Sawyer State Park.

### NO ADMISSION OR PARKING FEES.

# SCHWINN Levi's

### ENTRY FORM FILL OUT COMPLETELY.

Enclose a copy of NBL LICENSE with this Entry Form.

Name: \_\_\_\_\_  
Address: \_\_\_\_\_  
City: \_\_\_\_\_ State: \_\_\_\_\_ Zip: \_\_\_\_\_  
NBL No. \_\_\_\_\_ Birthdate: \_\_\_\_\_  
Novice: \_\_\_\_\_ Expert: \_\_\_\_\_ Female: \_\_\_\_\_ Male: \_\_\_\_\_  
20" Bike No. \_\_\_\_\_ Exp. Date: \_\_\_\_\_  
Cruiser Bike No.: \_\_\_\_\_ Exp. Date: \_\_\_\_\_

### CIRCLE CLASSES ENTERED:

Boys Classes	Girls Classes	Open Classes
6 & Under 10 Yrs. 14 Yrs.	7 & Under 8-9	7 & Under 6-9 Open
7 Yrs. 11 Yrs. 15 Yrs.	10-11	10-11 Open
8 Yrs. 12 Yrs. 16 Yrs.	12-13	12-13 Open
9 Yrs. 13 Yrs. 17 & Over	14-15	14-15 Open
	16 & Over	16 & Over

Cruiser Classes	Pro
13 & Under 17	Pro
14 18-24	A Pro Pro Award
15 25-34	B Pro Pro Cruiser
16 35 & Over	

### RACING FEES

Class ..... \$35.00  
Open ..... \$35.00  
Cruiser ..... \$35.00  
Girls ..... \$35.00  
A Pro ..... \$75.00  
B Pro ..... \$65.00  
Pro Cruiser ..... \$55.00  
Pro Award ..... \$45.00

List applicable best 5 or 10 Nationals

1. \_\_\_\_\_  
2. \_\_\_\_\_  
3. \_\_\_\_\_  
4. \_\_\_\_\_  
5. \_\_\_\_\_  
6. \_\_\_\_\_  
7. \_\_\_\_\_  
8. \_\_\_\_\_  
9. \_\_\_\_\_  
10. \_\_\_\_\_

I do not have my 5 Nationals as of this date but I will be attending the National (s) at:

to qualify me to compete for a National Plate at the Grand National.

### RELEASE FORM

(Please read the following before signing.)

In applying to enter any or all of the above mentioned races, I the racer and I've the parent/gdn., hereby release all the rights and claims which I may have against you arising from conditions related to use of the track or track area or as a result thereof. Each of the undersigned expressly agree that the foregoing release waiver holds harmless and indemnifies National Bicycle League, Schwinn Bicycle Company, Levi Strauss & Co., its directors, owners and possessors of Derby City BMX Association, the Kentucky Department of Parks, and E.P. "Tom" Sawyer State Park.

Parent/Gdn. Signature: \_\_\_\_\_

Date Signed: \_\_\_\_\_

Rider's Signature: \_\_\_\_\_

Date Signed: \_\_\_\_\_

Total Amount Enclosed: \_\_\_\_\_



