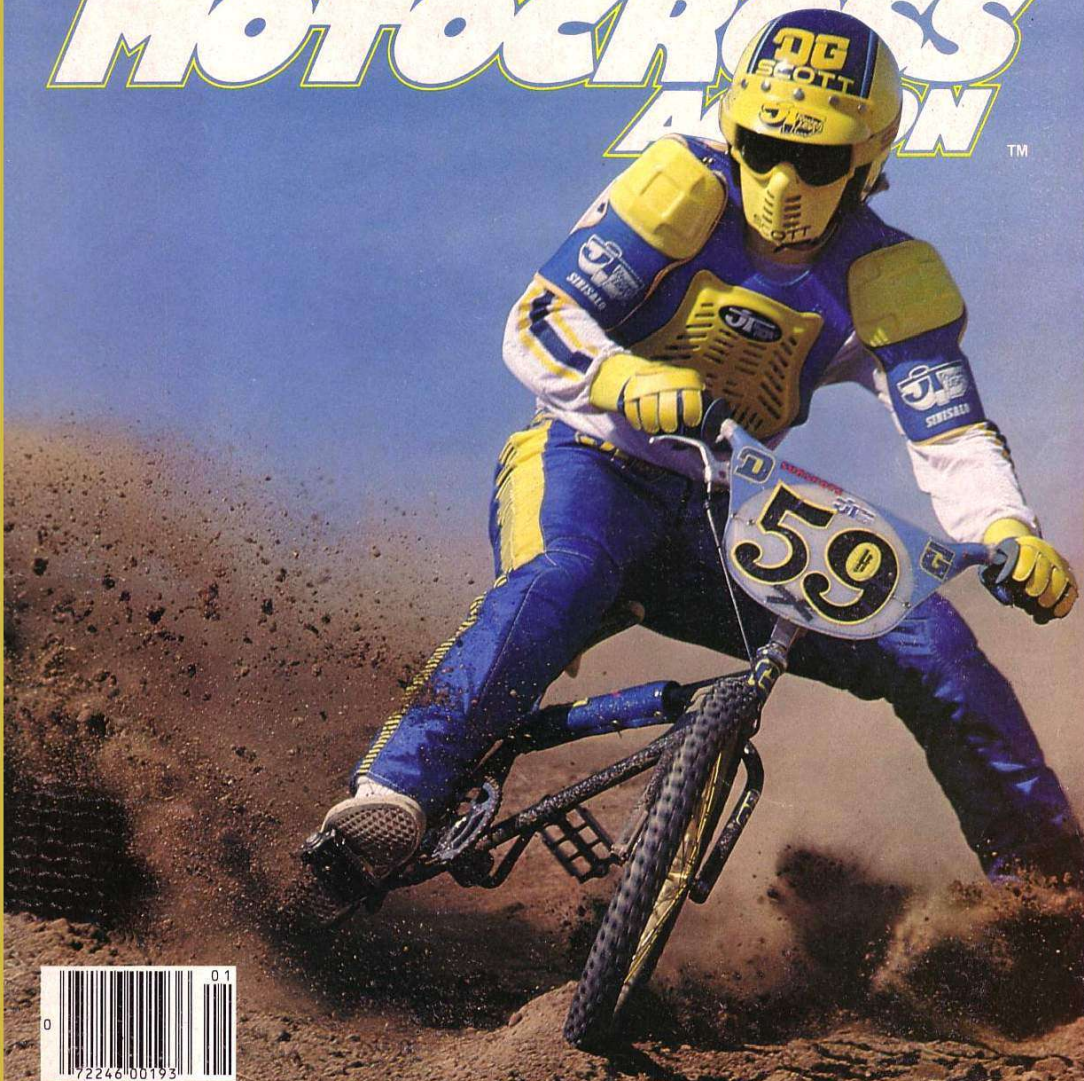


BICYCLE MOTOCROSS ACTION™

JANUARY 1980 00193 CDC \$1.50
THE WORLD'S LARGEST BMX PUBLICATION



TEST: RED LINE MX-II
BMXA NORA CUP AWARDS
FULL BORE CRUISERS

GO FOR IT!

with Troxel's
Trakmaster
Trio



Performance
plus Flash

The Wheels



Molded of glass-filled (reinforced) nylon, they're light, but tough enough to stand up to anything you can lay on 'em! Won't bend or break with sharp impact. Color is molded into plastic to last. Rear is complete with coaster brake assembled; front has strong 3/8" diameter axle assembled. Available in sets, ready for tire mounting (tires not included). They meet or exceed all CPSC standards.

The Seats



The lightest in the world—a mere 12½ oz. (354.4 grams). Strongest, too. Undercarriage and seat are molded in ONE piece of high-impact polypropylene with extra support in center impact area. Strong plated steel mounting clamp. Meets all CPSC standards.

The Pads



For bar, frame and stem, are super-shiny, high gloss vinyl over thick, shock absorbing foam padding. Strong snaps fasten securely.

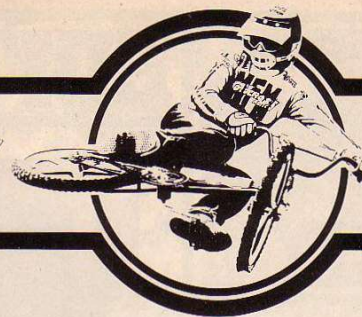
All three color-matched
in red, yellow, blue, black
and available now at
your bike dealer



Makers of
dependable, quality
bicycle products
for over 80 years

TROXEL MANUFACTURING CO., MOSCOW, TN 38057

BICYCLE MOTOCROSS ACTION



JANUARY 1980
VOLUME FIVE
NUMBER ONE

Publisher and Editor
BOB OSBORN

Advertising Director
YVETTE BARNETT

Art Director
GARNET BLAIR

Marketing Director
RICK RAUS

Distribution
EDDIE HAMBY

Graphics
BOB HARO

Subscriptions and Photography
WINDY

Customer Relations
VALERIE DEMIRJIAN

Photo Production
COMPETITION PHOTOGRAPHERS

Test Consultants
R.L. OSBORN
MIKE BUFF

LIL' ROBERT EMRICH
BUILDING LEAPIN' JONES

Contributing Editors
MATT RAYMER
STEVE GIBERSON

Factory Mouser
MOTO CAT

Editorial and Advertising Offices
WIZARD PUBLICATIONS
2909 OREGON COURT C-5
TORRANCE, CA 90503
TEL: (213) 533-6016

**Advertising Representative
in Japan**
TANDEM, INC.
301 NAKATO BLDG.
15-22 DOHYAMA-CHO
KITA-KU, OSAKA 530, JAPAN
TEL: 06-351-6800

4 EDITORIAL

Truckin' on down the road

17 DEAR WIZ,

Or Dear Abbey, as the case might be

30 TEST: RED LINE MX-II

Production in the Land of the Rising Sun

42 CORONA: ABA MINI-NATIONALS

Tuning up for the Grand Nationals

44 CORONA TRIVIA

Legerdemain by Breithaupt

56 HOT SHOTS

BMX photography gets more hectic

66 1979 NORA CUP RESULTS

U-Picked-Em . . . the big winners

74 FULL BORE CRUISERS

Clunkers? Balloons? Bombers? Tankers?

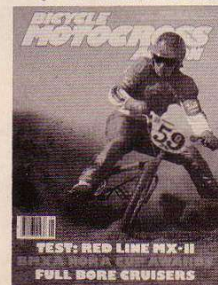
84 ON ANY SUNDAY II

Great balls o' fire, Martha, here we go again

94 ODDS AND ENDOS

Marching to a different drummer

COVER: DG's Byron Friday flat cuttin' mud
goin' into the first turn at Corona.



BICYCLE MOTOCROSS ACTION (USPS 374-490) is published 12 times per year by Wizard Publications, Inc., 2909 Oregon Court, C-5, Torrance, California 90503. Tel: (213) 533-6016. Second class postage paid at Torrance, California and at additional mailing offices. Subscriptions cost \$14.50 per year for 12 issues. Foreign subscriptions add \$4.00 per year and Canadian subscriptions add \$3.00 per year for additional postage. Copyright © 1980 by Wizard Publications, Inc. All rights reserved. Nothing in this magazine may be reprinted in whole or in part without the express written permission of the publisher.

EDITORIAL CONTRIBUTIONS are welcome. All submissions should be accompanied by a self-addressed, stamped envelope. All manuscripts should be typed and double-spaced. Photographs must be 5x7 or 8x10 glossy black and white or 35mm or larger color slides. Please mark each photo with owner's name and address. WIZARD PUBLICATIONS, INC. assumes no responsibility for loss or damage of submitted material. Submission of a manuscript, photographs, advertisement, etc. to BICYCLE MOTOCROSS ACTION is the author's, photographer's, or advertiser's warranty that the material is in no way an infringement upon the rights of others and that material is released for publication without additional approval. BICYCLE MOTOCROSS ACTION, P.O. Box 5277, Torrance, California 90510.



EDITORIAL BY BOB OSBORN

**"On Saturday night,
Jane gets right,
The Monkey gets tight,
And their voices unite,
In the pale moonlight,
And it sounds all right.
Out of sight!"**

— Ray Stevens
"Guitarzan"

Actually, that sub-head had nothing whatsoever to do with this "Editorial" except that I've been wanting to use it for a long time and couldn't figure out any other way. And you've gotta admit that it's a cool intro.

The real "Editorial" begins here:

Now I would be the last person in the world to say "I told you so."

But facts are facts.

And I told you so.

BMX is more and more getting to be a traveling sport. A couple years ago I told you, and I've said it many times since.

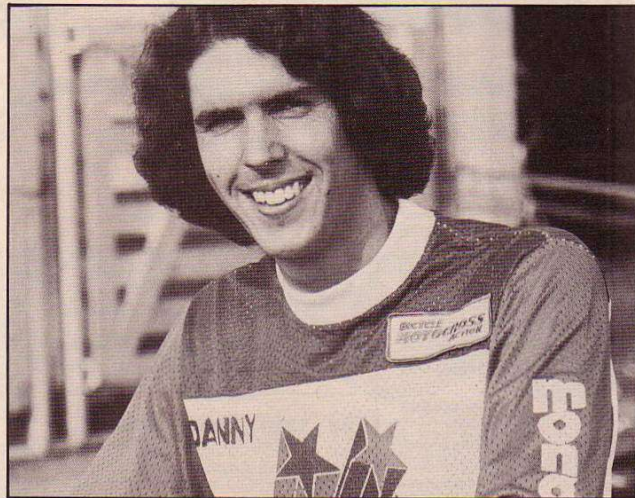
But I've got to tell you that I fell way short of the mark.

The traveling aspects of the sport are part of what brings BMX families together. In addition to the family sponsorship of the kids, and the accompanying shared thrill and challenge of competition, they can also enjoy the occasional weekend trips to the heavy duty races.

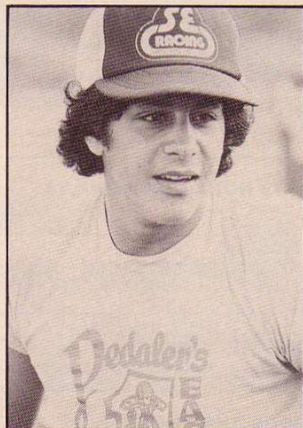
In other words, the kids get to race, the parents get to travel, and the glue that sticks it all together are the common goals and interests that are vital to all members of the family. The result is communication; exciting, lively communication within the family.

In many families who are just getting into BMX, this communication is totally new and unexpected. In some cases, this is the first time in years that the parents and kids have really talked to each other. This is an amazing and (without trying to sound hokie) heart-warming thing.

But back to our subject . . . traveling. There are some racers who have gone way past these occasional weekend



Dangerous Danny Oakley . . . NorCal.



Terry Zeuner . . . New Jersey.



John Kovachi . . . Georgia.

trips to the biggies. These are the national-class privateers and the top factory sponsored riders. These guys are seeing more of our nation—and in a few cases, the world—than your average traveling salesman.

These are the elite few who have the talent, energy, and bucks to go blazing down the trail of little numbers, chasing the elusive balloons of fame, fortune,

and glory . . . for their sponsors, their states, their families, and themselves.

These racers who follow the national circuits of the major sanctioning bodies are the undisputed Lords Temporal and Spiritual of BMX. These guys are the aristocracy of the sport.

A few who deserve more recognition than they sometimes get are shown here.

continued on page 6

"Now you can join the most exclusive club in bicycle motocross!"



Shimano's Factory Team/West: Bobby Encinas, Chris Allen and David Clinton.

Shimano's Factory Team has led the way since the very first bicycle motocross race. Shimano sponsored it. And since then living legends of the sport, like John George, David Clinton and Bobby Encinas, have raced Shimano's colors and components to victory.

For the 1980 racing season you can wear our colors and join the most famous team in the business through the Shimano Bicycle Motocross Club. And as a special bonus we've put together an incredible package of Totally Factory Goodies.



First you get a primo quality, official Factory Team T-Shirt. Handsomely done up in our three competition colors, this is one shirt that'll make you look tough even when you're just layin' back.

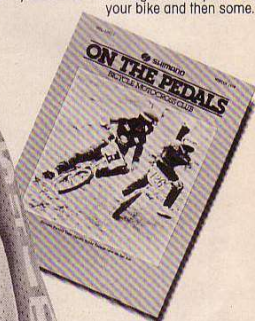


Then we toss in that hot embroidered patch you've seen sewn on the jersey of just about every factory heavy hitter around. And it'll look just as sano on your jacket or cap.

Bobby Encinas



Club members also get what just may be the last word in super decal sets, with a two sheet package of 9 (count 'em!) full-color/chrome mylar stickers . . . enough for every tube on your bike and then some.



And to keep you right up to date on all the action you'll get a one year subscription to "On the Pedals," official journal of the Shimano Factory Team.

Published quarterly, "On the Pedals" is crammed with Hot Tips and Speed Secrets from the pros, plus the latest on trick new components and Shimano racers all over the world.

OK Bobby! Sign me up!

I want to join the Shimano Motocross Club and take advantage of your charter membership offer including T-Shirt, patch, decal set and 1-year subscription to "On the Pedals" (A \$20.00 value!) I've enclosed \$10.00 (check or money order, Calif. residents add .60 sales tax). So hurry up already!

T-Shirt S M L XL

Name _____ Age _____

Street _____

City _____ State _____ Zip _____

Member: NBA ABA _____ (Other) Class _____

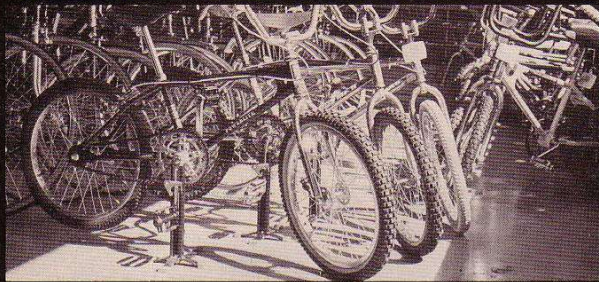
Track location: _____ Frame Make _____

(Checks payable to Shimano Motocross Club. Please Print! You Turkeys.)



9259 San Fernando Road
Sun Valley/California/91352

AT THE BIKE SHOP...SHOWROOM...



AT YOUR PLACE OF BIZ...THE TRACK...



AT HOME...IN YOUR ROOM OR GARAGE...



NAGAOKA HOLDS IT UP! THE STAND THAT WORKS

Quick shipments from U.S.A. warehouse!
Distributors and dealers contact:
EVERYTHING BICYCLES, 22122-B S. Vermont
Torrance, CA 90503 • (213) 328-4222

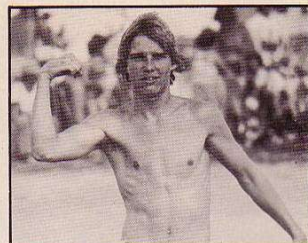
Manufacturer:
NAGAOKA METAL INDUSTRIAL CO.
c/o Teel, Inc., 114 Essex St.
Rochelle Park, NJ 07662

EDITORIAL

continued from page 4



Edward King . . . SoCal.



Brian Esser . . . Florida. Hercules unchained.



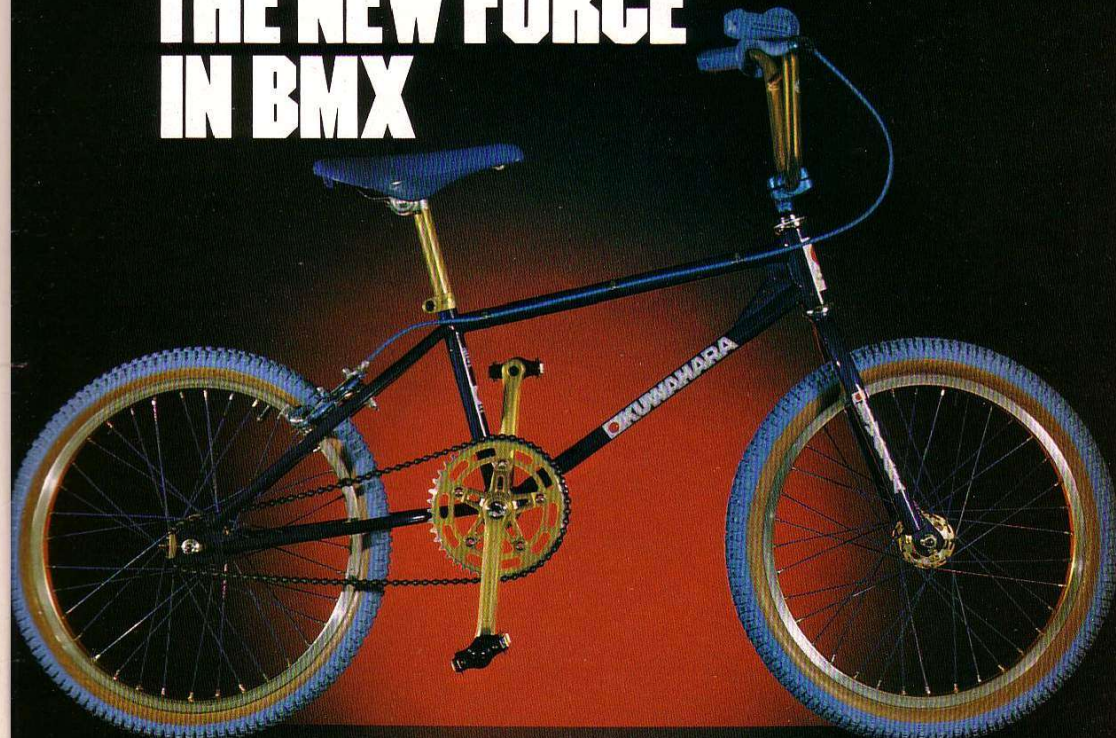
Paul Murray . . . Indiana.

continued on page 11

BICYCLE MOTOCROSS ACTION

KUWAHARA

THE NEW FORCE IN BMX



The racing machine that smokes on the track and on the street. Race proven geometry delivers radical maneuvering ability assuring fast starts with controlled jumps and turns.

The **KUWAHARA** frame and fork is produced entirely from aircraft quality chrome-molly tubing. Equipped with the tough and lightweight alloy parts PROS race with: Sun Tour, DiaCompe, Taihei, MKS Bonsai, Ukai shiny-side box rims.

The elegant finish (black, blue & white) combined with all that anodized equipment will blow your mind and blind your competition.

Unbelievable! This bullet-proof bike only costs about \$290 at the hottest BMX Bike Shops.

KUWAHARA, the serious racing machine from Japan, the land of Yamaha, Suzuki, Kawasaki & Honda.

KUWAHARA

Dealers & Distributors contact:

**EVERYTHING
BICYCLES**

15000 Staff Court
Gardena, CA 90248 (213) 328-4222

GET ON IT!



From Take-off... To Splashdown



There's no test too tough for Supergoose! Whether you're slicing through a sheet of water, banking your way through a berm, or landing off a jump, you've got more to think about than your bike. Mongoose factory astronaut Danny Oakley knows he can trust his Supergoose. It's designed with spacecraft quality all chromoly frame and fork. Super light anodized alloy wheels for super quick take-offs. Stainless steel handlebars and seat post for years of rough landings. A chromoly crank to get all the thrust where you want it - to the rear wheel. No flexing, bending or twisting - which means no power loss. Engineered to be light-years ahead of the competition. When you are ready, Splashdown with confidence. **Supergoose. Test Fly one at your local bike shop!**

mongoose

© 1979 B.M.X. PRODUCTS, INC., 3624 IRONDALE AVE., CHATSWORTH, CA 91311

SPECIFICATIONS SUBJECT TO CHANGE WITHOUT NOTICE

ABA



WHY HAVE WE BECOME THE WORLD'S LARGEST BMX SANCTION?

1. BECAUSE WE HAVE THE BEST INSURANCE PROGRAM FOR BMX...

- All ABA members are covered with a \$1,000 primary medical insurance policy which is good at any ABA race or organized and supervised practice session. It's \$25 deductible and pays in addition to all other policies a racer may have. (Non-members can purchase this insurance for \$6 per year.)
- Track operators pay a \$15 per race day sanction fee which provides \$500,000 spectator liability coverage. In addition, products and operations like snack bars are covered. Also available is a participant liability plan for \$30 per race day which is \$500,000 coverage and \$1,000 deductible. This plan was designed for track operators renting or leasing land such as fairgrounds, city parks, etc.

2. BECAUSE OUR PROGRAM FOR TRACK OPERATORS ELIMINATES HASSLES ON RACE DAY...

- We tabulate points on a district and national level for you.
- Total sanctioning fee of \$15 includes a half million dollars spectator liability insurance coverage (A half million dollars rider liability is optional at \$30 per race day).
- We get together at our Annual Track Operators Convention. In 1980, the convention will be held January 24th through the 27th at the Marina Hotel in Las Vegas, Nevada (Open to non-ABA track operators).
- Each ABA track may have two double-points races per year with no extra sanctioning fee.

3. BECAUSE OUR MEMBERS GET THEIR MONEY'S WORTH...

- A \$14 per year membership includes:
 - Primary medical insurance—\$25 deductible
 - Bullet-proof plastic-laminated membership card
 - Points earned at district and national levels
 - ABA Action Newspaper mailed monthly
 - Plastic number plate with district decal
 - Rule book
 - Two ABA decals

1980 ABA/RALEIGH RAMPAR WINTERNATIONALS
Chandler, Arizona
February 10

WON'T YOU JOIN US?

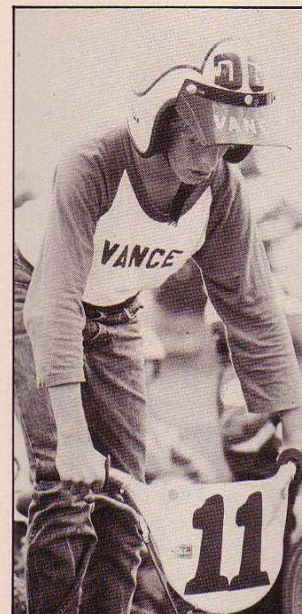
American Bicycle Association
P.O. Box 718
Chandler, Arizona 85224
(602) 963-5715

Watch for our National Summer Tour in your area!

For more information
call (602) 963-5715

EDITORIAL

continued from page 6



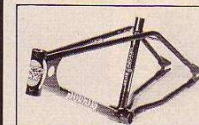
Vance Justice . . . Florida. This guy is ripe for a good sponsorship.



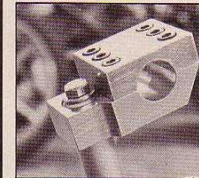
Seth Buccieri . . . Florida.

TORKER

1889-J.W. COMMONWEALTH • FULLERTON • CA 92633 • (714) 738-3503



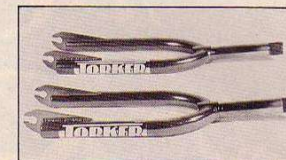
E.K. CHROME-MOLY RACING FRAME • 3.5 LBS.



NEW TORKER STEM • 15 OUNCES



- TORKFLYTE COMPLETE BIKE
- TORKER MILD STEEL OR CHROME-MOLY FRAME
- TORKER ALLOY STEM AND BARS
- ARAYA SHIMANO FREE HUB
- CONTRASTING WHEELS
- TAKAGI 175 CHROME-MOLY CRANK
- ALLOY SPROCKET WITH CHROME-MOLY SPYDER
- MITSUBOSHI SKINWALL TIRES



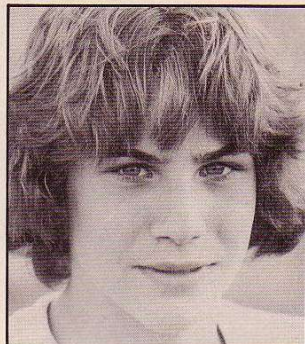
TORKER STANDARD AND MINI CHROME-MOLY FORKS



L.P. MILD STEEL AND CHROME-MOLY FRAME

TO THE MAX

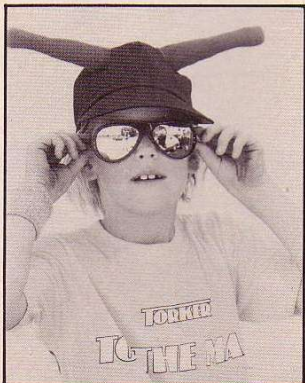
EDITORIAL



Jeff "Awesome" Osmus ... Texas.



Gregory Hill ... SoCal.



We don't know who this turkey is.

BICYCLE MOTOCROSS ACTION

DIE CUT STICKER-PACK \$1.00
OAKLEY PATCH \$2.00
OAKLEY POSTER \$3.00

OAKLEY

23086 Terra Drive Laguna Hills, Ca. 92653

RACER'S EDGE LTD.
 THE ONLY ALL-BMX STORE IN THE MIDWEST

MAIL ORDER!
 Send a self-addressed stamped envelope for our FREE price list.

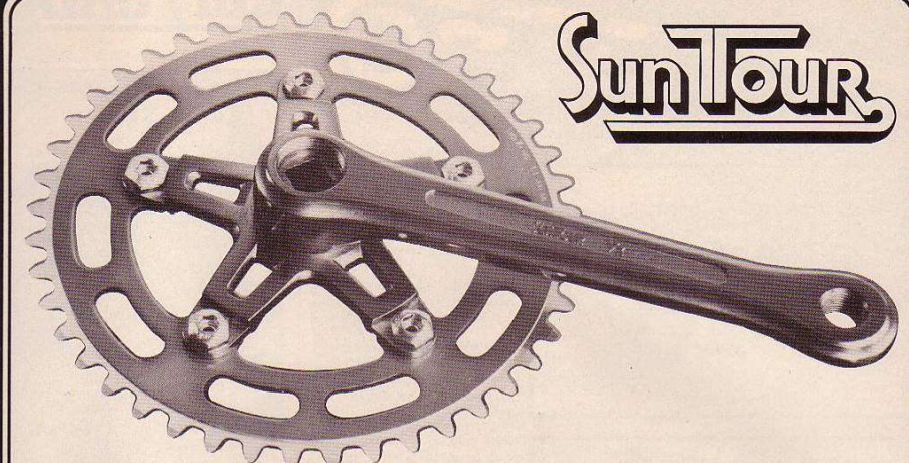
CYC STORMER • DG • MONGOOSE
 RED LINE • MCS • POWERLITE
 COOK BROS. • TORKER • LAGUNA

Complete bicycles available—stock or custom • All the hot BMX accessories

For more info call (312) 945-7840

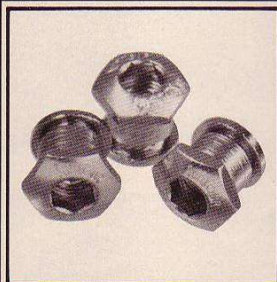
Racer's Edge Ltd. • 835 Waukegan Road • Deerfield, Ill. 60015

SunTour

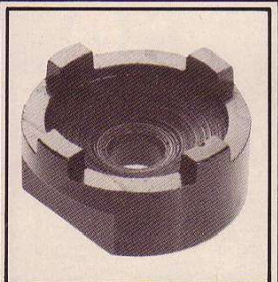


HIGH PERFORMANCE BMX EQUIPMENT... CLEAN AND EASY.

SUN TOUR VX CRANKS...17% thicker with reinforced ribs for super rigidity and maximum performance. 152mm, 170mm or 175mm. Super trick buffed Diamond Tooth chain rings will fit a regular 1/8" or 3/32" 10-speed chain. Now available in 39 through 48 teeth. Anodized in blue, red or gold. Cranks and chain rings interchangeable with Super Maxy or Mity Tour components and Sugino Spiders.



Hex headed chain wheel bolts...as easy to tighten as they are to loosen.



TA-103 EZ 4-Key remover for EZ off Freewheel. A strip proof remover for the strip proof freewheel. Available in 15, 16, and 17 teeth. For regular 1/8" or 3/32" ten speed chain.

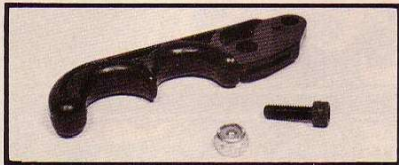


For a full color catalog and sticker send \$1.00 to:
SUNTOUR U.S.A., INC.
 10 Madison Road, Dept. BMXA • Fairfield, NJ 07006
 (201) 575-1128



HARO PRO PLATES
The cleanest looking plate today. Ridden by more pro's, teams and fast guys than any other. Available in four blazing hot team colors: Redline, Mongoose, DG and Torker. Plates come complete with ties, and easy instructions.

HARO WERKS NUMBERS
Stylish looking yet highly ledgeable, available in either black or white permanent vinyl.



HARO HANDLE
Dyno two finger construction offers positive feel and ultra quick braking response. Available in blue, red or yellow with allen bolt and nut.
For more info send 50¢ for sticker and brochure.

(213) 533-6096

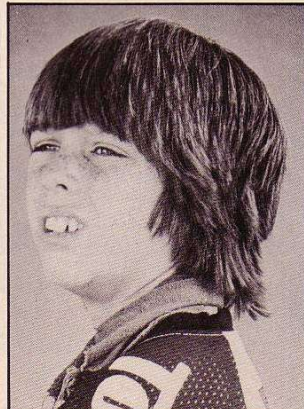
EDITORIAL



Bart McDaniels . . . Washington.



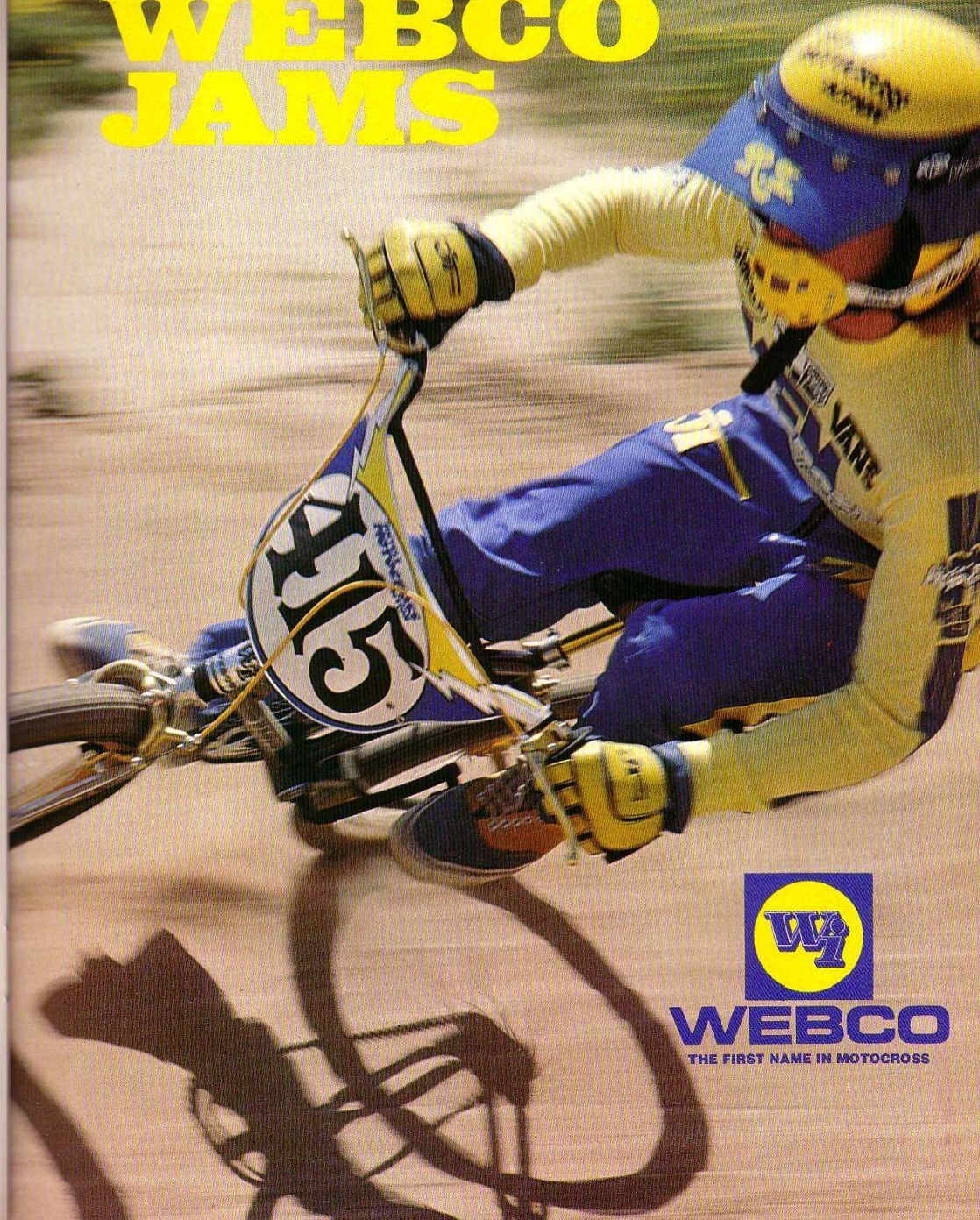
Paul Wegener . . . Georgia.



Doug Davis . . . SoCal.

★

WEBCO JAMS



ROBINSON RACING PRODUCTS

7017 Irondale Avenue
Canoga Park, CA 91306
(213) 992-0247

STICKERS! YOUR CHOICE 50¢



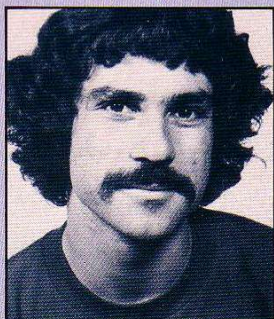
Send 50¢ for each sticker above or \$6 for all 15.
Get our new '79 catalog of over 900 stickers plus 5 free samples (our choice) for only \$2.
Send your money and list of what you want to:

STICK-EM UP
1814 Catalina Court, Dept. F
Livermore, CA 94550

RAD PAD



Stuart Thomas



Perry Thomas

We even make pads for these guys.

JOHAR OF CALIFORNIA

DEAR WIZ

Unafraid, we herein solicit social comments, remarks about articles, suggestions, assorted drivel, or whatever.

TESTIMONIAL

Six months ago I saw a copy of your fab mag, bought it, and read it. I was totally stoked and really got involved in BMX. I'd like to say that before I got into BMX I watched TV all day and was BORED. Thanks! Your mag is NUMERO UNO!

Bill Borclund
Willits, California

Ain't it amazing that if you kick the TV habit there's a whole real world going on out there. And BMX is one of the more exciting parts of it. —Oz

DEAR ABBY . . . UH . . . WIZ

I have this problem that doesn't have a thing to do with BMX, but nobody else seems able to help me so I'm asking the Wiz.

I used to have a girlfriend. Her name was Pauline. I never really talked to her

SEMI-IMPORTANT NOTICE:

To all you racing fools who write to Hefty BMXA, we thank you each and every one. We read every letter you send. But, alas and alack, there's just no way we can run them all . . . short of publishing something the size of the Sears Catalog.

What we can do is run the most interesting and informative letters in "Dear Wiz." To the rest of you dudes . . . well, that's how the cookie crumbles. But it doesn't mean we don't still love ya'.

break up, she sent two of her girlfriends instead. I couldn't believe it when I first heard we were through. I'm not sure if she did it because of my not talking to her, or if it was things that my friends were telling her that I said but which I really didn't. Many of my friends have tried to convince her to get back together with me but she just tells them, "No chance!"

I wish we could get back together because I love her very much and never want to break up with her. So, Mr. Wizard, I am deeply in need of your help because I am desperate to get back with her.

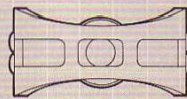
Heart-broken
Hemet, California

much because I'm very shy. She broke up with me a couple months ago and I am heart-broken over the break up. She didn't tell me that she wanted to

*Dear Heart-broken,
You are fortunate indeed to have come to one of such vast amorous experience as myself. Your problem,*

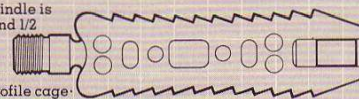
DESIGNED TO PERFORM

KKT Lightning Pedals for motocross competition.



KKT's light alloy cage is anodized in three brilliant colors: blue, red, and gold.

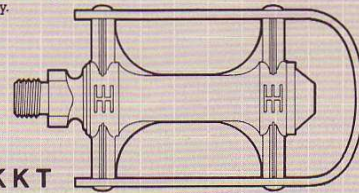
Superlight chromoly spindle is available in both 9/16 and 1/2 inch sizes.



Special Lightning-profile cage teeth are directionally angled for positive gripping action at the gate and out of the berms.



Non-skid gripper bars provide added traction to cast light alloy frame body.



KKT
Kyokuto Manufacturing Co., Ltd. Osaka, Japan



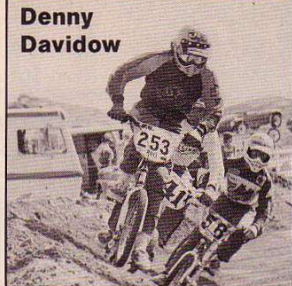
OPTIONAL REFLECTORS AVAILABLE TO MEET CPSC REGULATIONS FOR STREET USE.

For more information, please contact:

SHIMANO SALES CORPORATION
9259 San Fernando Road/Sun Valley/CA 91352

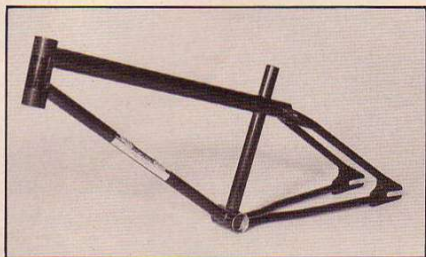


Lee
Medlin



Denny
Davidow

They depend on



• 4130 CHROME-MOLY • 3 lbs. 4 oz. • IN CHROME
BLACK, BLUE OR RED • EUROPEAN BOTTOM BRACKET
(AMERICAN BOTTOM BRACKET AVAILABLE SOON)

GT BMX

2024 E. Lincoln Avenue • Anaheim • CA 92806 • (714) 956-1313

DEALER INQUIRIES INVITED

DEAR WIZ

quite obviously, is communication. First you must get this young lady's attention. Then, and only then, can you put the swoop on her.

So here's what you do . . . get your bike all spiffed out, then ride over to your true love's house. When you get there holler real loud something like:

Yo Pauline!
You are my queen!
It is of you I dream,
When I ride my racing machine!

Then ride up and down her street a couple times standing on your seat, holding a rose in your teeth, and giving her the peace sign. From this point on she'll be putty in your hands. All you gotta do now is nail it down with something like, "See what you're missing, baby? Hot stuff, huh?"

Take the word of someone who is fiendishly seductive to women, this method works every time. -Oz.

THE OZ LETTERS

Your mag is No. 1 but is worth about as much as bearings without grease unless you start printing the Oz letters again.

Magic Miller and Hurricane Heiland
South Bend, Indiana

Jeez, you guys, we only dropped it once (October 1979). But I'll tell you, I'm really stoked. All this time I thought nobody noticed these pearls of humor, wisdom, and info so laboriously created for our readers' moral and spiritual edification that have been interspersed in "Dear Wiz" like scattering bread upon the water. And then I get a nice letter like this. Sorta brings a tear to my eye. -Oz.

IMPECCABLE TASTE

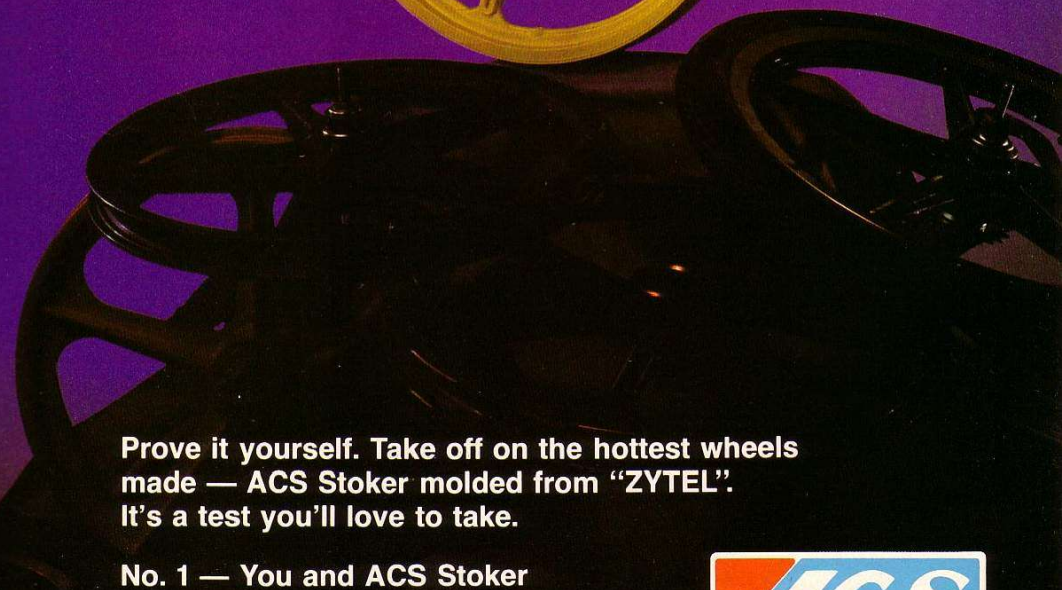
I have been reading your magazine at our school. Almost everybody goes into the library just to see the issues of BICYCLE MOTOCROSS ACTION. If you listen around, the whole school is talking about BMX racing and what kind of bike they have. Of all the different magazines I have seen, yours is the best. I'm glad you have a company that makes it.

Peter Janu
Brookfield, Wisconsin

RED LINES AND CHEESECAKE

Why don't you test a Red Line Pro Line? It's long and good for big riders. And just for my dad ('cause Lord knows
continued on page 23

Who's the Toughest of Them All?



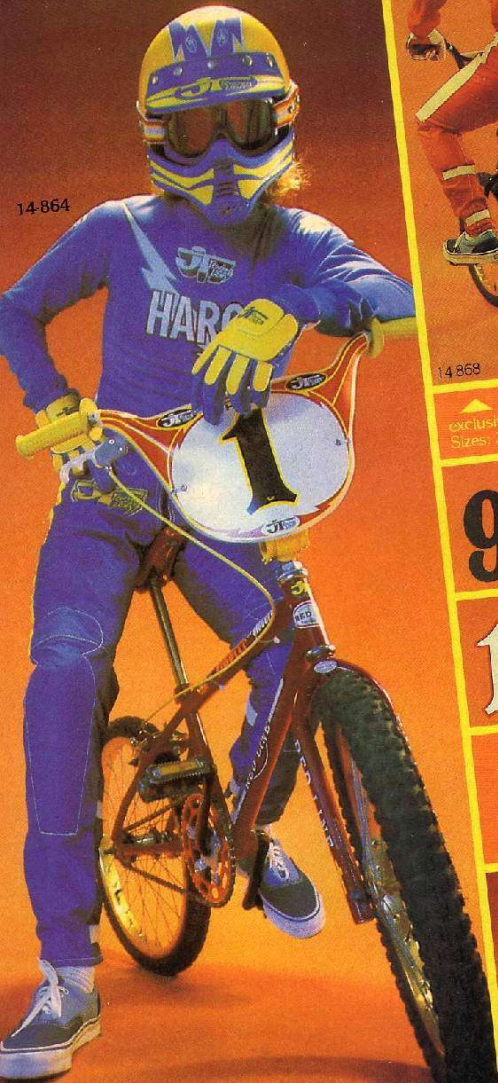
Prove it yourself. Take off on the hottest wheels made — ACS Stoker molded from "ZYTEL". It's a test you'll love to take.

No. 1 — You and ACS Stoker



AMERICAN CYCLE SYSTEMS, INC.
Covina, Calif.

14-864



BOB HARO



JT BMX PANTS — Features built-in shin guard, exclusive "calf wrap"™ system, and tapered lower calf. Waist \$48.95
 Sizes: 22, 24, 26, 28, 30, 32, 34

98765 09-101

13456 09-102

JT DIRT DIGITS — Trick and colorful and numbers come in Black/yellow, Black/red, White/red, solid white and solid black. (In packs of ten) Specify number and color \$4.95



JT BOLTS — Specify Color 05-201 \$1.25 05-200 \$1.50 05-202 \$1.50



JT HARO PLATE — The hot new set up for the trick track bikes. Specify Part No. and color \$9.95



JT BMX GRIPS — Special design allows a sure grip and more control. Available in Red, Black, Blue or Yellow \$3.95

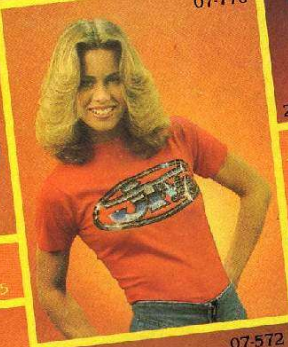
JT TEASE SHIRTS
 Mens (s, m, l and xl) \$7.95
 Womens (s, m and l) \$5.80
 Your Choice Red, Yellow or Blue



07-573



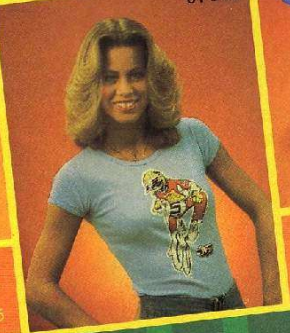
JT STICKIES — 8 Super-Trick stickers \$3.95



07-770



JT WONDER WALLETS — Fantastic, colorful and washable. Available in colors shown. Only \$7.95



07-572



JT TEAM HATS — 02-105
 Your choice of team hats, specify color \$6.50



20-237



20-251



20-252

JT HALFBREED™
 Nylon verted and lambskin
 Sizes 8,9,10,11 \$24.50
 Kids 5,6,7 \$21.65

JT CHAMPION II
 All leather inside palm padding
 Sizes 8,9,10 and 11 \$30.50
 Kids 5,6, and 7 \$22.65



JT VISOR 04-109 — Red, White, Blue, or Yellow \$4.95
JT MOUTHGUARD 04-175
 Red, White, Yellow, Blue or Pink \$8.95



JT TEAM SCREEN
 Fully adjustable in four color combos
 Black/Yellow, Blue/Yellow, Red/Yellow and Red/White \$39.50

JT Racing USA
WE GOT'CHA COVERED

BMX

Name _____
 Address _____
 City/State/Zip _____
 Amt. Enclosed MC VISA AM EXPRESS
 Exp. Date _____ Credit Card No. _____
 ALL PREPAID AND COD ORDERS SENT FREIGHT COLLECT!
 Send money order to avoid delay in shipping. Allow 45 days on orders with personal checks. (Orders less than \$10.00 add \$1.50 shipping fee. Foreign orders add 10% shipping fee prepaid in U.S. only. For super-fast delivery call (714) 427-0971. DEALER: Send for free catalog on letterhead. BVXCVJAN.

ITEM #	QUAN.	SIZE	COLOR	AMOUNT

CUSTOM LETTERING — NO CUSTOM LETTERING ON COD.
 Name Applied _____ Number Applied _____
 Cust./letter _____ Total Cost _____
 Calif. residents add 6% sales tax.

JT RACING USA, 303 West 35th Street
 Ste. D, National City, CA 92050
 Telex No. 697-869

BW's improve your racing image

Ask Tinker

JERSEYS

Custom-made jerseys are available in any color combination and quantities desired. When your team or shop is interested in jerseys, send us a drawing showing detailed colors, silk-screening, and quantity and let us quote you. Specify 100% nylon mesh or 100% nylon double-knit solid material, or a combination of both. (Minimum order of six)

PANTS

These new BMX PANTS are made of top quality, heavy-duty, double-stitched nylon and have been restyled with a special SPANDEX panel inside the leg that breathes and stretches. They are designed with padded CORDURA nylon knees, padded shins and sewn-in hip pads. The legs are fitted with VELCRO closures for your comfort and safety. Order blue, black, red, yellow, gold, white, green, dark brown or orange nylon, with your choice of contrasting side stripes. Custom lettering available.

Send 50¢ for brochure and sticker.



BILL WALTERS LEATHERS
7359 Varna Avenue
No. Hollywood, CA 91605
(213) 982-3738



DEAR WIZ

continued from page 18

I'd never look), would you print a picture of Windy? Your magazine is the bible of motocross!

Andy Marks
Columbus, Ohio

Now don't you look, Andy . . .



Windy with the BMXA factory mouser, Moto Cat.

In the August 1979 BMX you said that if we sent a letter about a bike to test, that it would probably be tested in the near future. How about testing a Red Line Pro Line?

Evan Lee and Greg Schmidt
Bartlesville, Oklahoma

Would all you guys settle for a test of the Red Line MX-II? If you would, it's somewhere in this issue. If you won't, then this copy of BMX will self-destruct and singe your new MXL gloves.—Oz

MAX TRUBS

Can you tell me what's wrong with my Sugino Super Maxy crankset? Most every time I ride my bike the left pedal arm comes loose. I have asked the bike shops around, but when I do what they say, the pedal arm still comes loose. So I wrote to you.

Dave Peterson
Northglenn, Colorado

First off, Dave, you probably know already that the square shaft of the spindle and the square hole of the pedal arm each have a slight taper (usually two degrees) which causes a seating-

continued on page 26



INTRODUCING THE GJS "A" FRAME

Ask the pro
that rides one...

Clint Miller,
Jeff Utterback,
and
Gary Miller (FL)



100% 4130
CHROME-MOLY

AVAILABLE IN
TANGERINE
RED, YELLOW,
BLUE AND
BLACK

FOR INFO WRITE

GJS
1410 E. 28th St.
Signal Hill, CA 90806

DISTRIBUTORS:

Bike Brokers/3009-B North New U.S. 41/
North Fort Meyers/FL 33903

C.Y.C. Distributing/P.O. Box 487/
Hawthorne/CA 90250

Detroit Cycle Supply/478 W. Columbia/
Detroit/MI 48201

SE Racing/1667 E. 28th St./
Signal Hill/CA 90806

TARTAN BICYCLE SALES



MAIL ORDER
ANYTHING IN
THE LATEST
HOT TRICK STUFF!

Send 50¢
for a complete
price list
and sticker

Call Truckin' Chuck
at (213) 963-0115

TARTAN BICYCLE SALES
2402 Valewood, Dept. BMX, San Dimas, CA 91773



The Professional BMX Racing Store



- OWNED AND OPERATED BY PROS, Sal Zeuner, NBL National No. 1, and Terry Zeuner, 1980 New Jersey State Champ
- FULLY STOCKED WITH PROFESSIONAL EQUIPMENT—bikes, frames, accessories and a full line of racing clothes
- 24 HOUR U.P.S. SERVICE
- HOT LINE FOR RACING EVENTS

PEDALER'S EAST • (809) 691-BIKE
24 Park Ave., Vineland, NJ 08360

PUT THIS HEADSET ON and be quick in the pits

BEFORE A RACE MAKE A COMPLETE ADJUSTMENT OF HEADSET

The upper head cone is especially made for fast adjustment with a 30mm spanner, which is better than adjusting by hand.

TANGE SEIKI CO., LTD.
 HEAD OFFICE: 2-2-2 HANSHUO CHO
 SAKAI CITY OSAKA JAPAN
 PHONE 0722-27-8511
 TOKYO BRANCH: 5-12-1 MIYAGI ADACHI-KU
 TOKYO JAPAN
 PHONE 03-914-2291

GOLD COLOR WASHER
 Accurate circumference
MX-2 HEADSET

For more information contact
SHIMANO SALES CORP.
 9258 San Fernando Road,
 Sun Valley, California
 91352 • (213)767-7777



At home or at the track...

Dax Stands!

For more information contact:
SHOWA INDUSTRIES LTD. • 1-6-Chome •
 Nishikikui-Cho • Nishi-Ku, Nagoya, JAPAN

Features:

- Slides on and off easily
- Does not damage bike
- Great for displaying bike
- Convenient
- Portable
- Economical



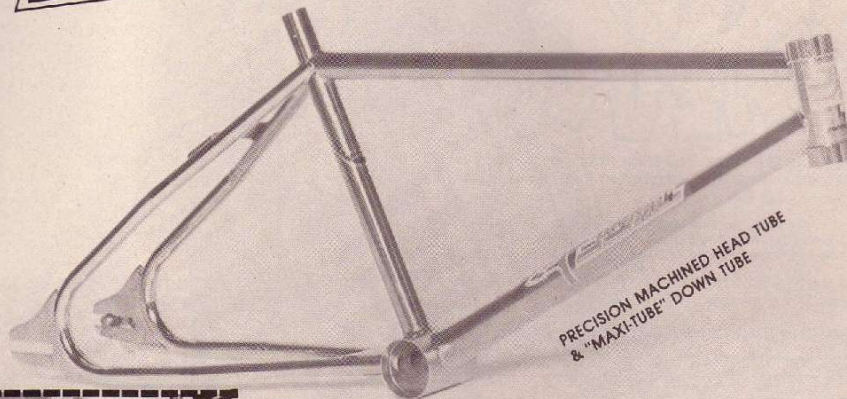
TRICK STUFF



FROM panda bmx bikes

.....THE ALL NEW

PANDA PRO-AM



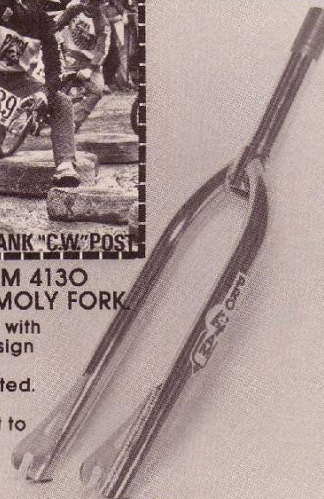
PRECISION MACHINED HEAD TUBE & "MAXI-TUBE" DOWN TUBE



Panda Pro - FRANK "C.W." POST

THE PRO-AM 4130 CHROME-MOLY FORK

Light weight with tapered design for strength. Chrome-plated. The perfect compliment to the Pro-Am frame... Trick Stuff!



*Check These Features

- **WELDING:** Heliarc tungsten inert gas welding process. Strong and beautiful.
- **TUBING:** "Maxi-Tube" double strength 1-3/8" down tube. Chrome-Moly 4130 aircraft tubing.
- **PRECISION MACHINED:** Head tube & hanger machined. Joints machined for precise tubing fit. Pre-drilled brake bar.
- **JIG FITTED & WELDED:** To insure precise alignment.
- **LO-FLEX:** Designed & engineered for low frame flex rate.
- **BALANCED:** The Pro-Am retains the famed Panda "Competition Geometry" for precise balance & control, but now in a new lower profile. Great for small and large riders.
- **LIGHTWEIGHT:** The Pro-Am incorporates a fine balance between the ultra-light weight and the proper amount of material necessary for a really tough durable, precision frame.
- **NICKEL PLATED:** Beautiful high-luster & long lasting nickel plating.
- **QUALITY CONTROL:** Each Pro-Am frame is thoroughly inspected to make sure you have the finest frame available.

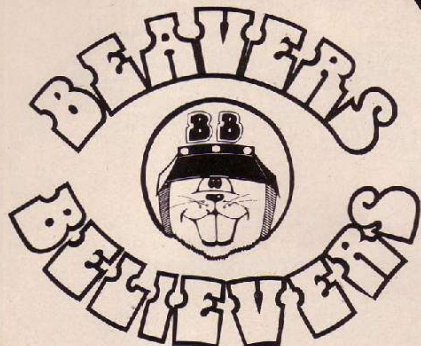


DISTRIBUTOR/MANUFACTURER



PANDA BIKE COMPANY
 1450 FRANQUETTE AVE.
 CONCORD, CA 94520
 (415) 798-3950

Who are



They're the Southern California Pros and winning riders who trust the professional people at Beavers to maintain and repair their racing machines. Ask them why.

Stompin' Stu Thomsen • P.K. Ripper • Scot OM-1 • Rod Beckering
Seth Buccicelli • Scott Clark • Bob Woods • Mark Wegner • Gary Renteria
Anthony Sewell • Kevin Jackson • Don Atherton • Bobby Encinas • Greg Hill

We know what's happening in BMX. Come see us or call our factory consultation service (213) 881-3308

BEAVERS BICYCLES, 19533 Ventura Blvd., Tarzana, CA 91356

See the new
DG BMX frame race
kit at your local dealer

Get pumped
Get pumped
Get pumped
Get pumped



SEND \$1.50 FOR THE TOTAL BMX CATALOG FROM DG

NAME _____
ADDRESS _____
CITY _____ STATE _____ ZIP _____

DG BMX • 9530 Dowdy Dr., Suite A, San Diego, CA 92126, (714) 566-7321

DEAR WIZ

continued from page 23

In when the pedal arm is cinched down. Most kids do not tighten the pedal arm bolt (or nut) enough. If this happened with you, and the bike was ridden with a loose pedal arm, the pedal arm hole could have become un-squared, which could cause your problem.

Another possibility has to do with additive variations in tolerances. For instance, if the tapered square shank of your spindle was machined a hair small, and the square tapered hole in your pedal arm was forged a hair large, then the total (additive) effect can be that the pedal arm bottoms out on the shoulder of the spindle before a solid seating-in occurs. And this too would cause your problem.

The solution—you won't like this—is to buy new pedal arms and fit them on your spindle to make sure they won't bottom out on the spindle shoulder. Okay?—Oz

THE BEST SCHWINN SX-1000 IN THE WORLD

I am now convinced I own the best Schwinn SX-1000 in the world. And all because of BMXA. In the June issue the test told owners of the SX-1000 how to modify the steering head to improve the handling. I did just that and I like it. Then I put on fluted handlebars, Oakleys, a gold Tuf-Neck stem, and a 44 tooth sprocket. Now that's hot! Keep it up, Oz!

Josh Goldstein
Atlanta, Georgia

Neither rain, nor sleet, nor dead of night, etc.—Oz

CLEVER LEVER

While I was reading the test on the Supergoose in your September issue, I noticed that trick looking brake lever on the bike in the color photo. Could you tell me where I could get one in southeast Florida? Your mag is the best.

Brendan Ellis
Port St. Lucie, Florida

Well, Brendan old bean, you can't get them yet in southeast Florida or anywhere else. That was a prototype lever that Bob Haro is in the process of perfecting. By the time you read this the bugs should be worked out and production begun. I've seen the thing and it's really going to be hot. Keep checking at your local bike shop or write to: HARO DESIGNS, P.O. Box 961, Dept. BMXA, Redondo Beach, CA 90277. Tel: (213) 533-6096.—Oz ★

BICYCLE MOTOCROSS ACTION

HARE-TRIGGER™

IT'S NEW!

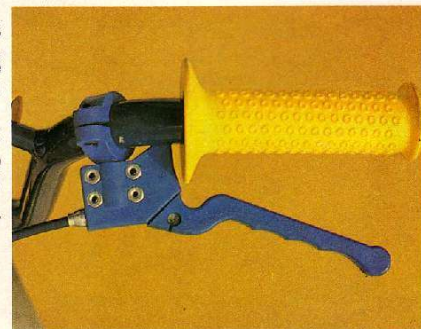


The HARE-TRIGGER is the first brake lever especially designed for BMX.

What's so good about the HARE-TRIGGER you ask? Well, it comes in colors (red, yellow, blue, or black); is made from strong, space age plastic; and best of all, mounts in exactly the position you want without all the bending and fooling around you go through installing other brake levers.

This ambidextrous HARE is either right or left-handed. It mounts to either side of your 7/8-inch handlebar. It can even be placed on the bend of the bar and still adjust to exactly the "grab" you want. All necessary mounting hardware and wrenches are included.

If you want to be number-1, and are running a hot-machine, the HARE-TRIGGER is for you.



HARE BMX PRODUCTS
1202 E. Edna Place
Covina, CA 91724
(213) 966-8483

GRADUATE TO A C.Y.C.

You want the best.

Like winner Antony Perez, you want the precision geometric engineering and competition-tested components of the best machine you can put between you and whatever it is down there you don't want a mouthful of.

CYC is the race proven bike that makes what you



like to do easier. And makes it easier for you to do more.

From little touches you'll appreciate, like the screaming decals—to big payoffs, like waiting for the riders who finished behind you—it just feels good. In the dirt or on the street.

We're not saying any CYC makes anything else you've ridden into a ho-hum two-wheeler.

But you will.

When you test ride our three race-light, tank-tough ways to thrash, bash and win, start with Stormer MX. "... If price is important," says BMXA, it's "the best. Period." Then move up. Let the tricked-out Panther and state-of-the-art Ames speak for themselves.

The right CYC is waiting for you to graduate.



Kashimax MX Saddle

Oakley I grips

Alloy handlebars for strength

Alloy or CR-MO double-stem clamps

Aluminum seat post

Competition II nylon skinwalls

Araya alloy wheels front & back

Tange TX-500 CR-MO steel forks

New Shimano free hub

Shimano Tourney calipers

Shimano one-key-release spindle

All alloy color anodized cranks

AMES STORMER



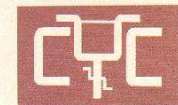
PANTHER

4 CR-MO frametubes, matching TX-1200 forks. Heat-treated 1-piece cranks, CR-MO pedals, Araya alloy wheels.



STORMER MX

Tange TX-1200 forks. BMX Knobbies. CR-MO pedals. Araya dimpled steel rims laced with .105 spokes.



WE BUILD WINNERS

CYC Distributing, P.O. Box 467, Hawthorne, CA 90250

RED LINE MX-II

ALMOST WORTH THE PRICE JUST
FOR THE SNOB APPEAL



RAD TESTING BY THE BMXA NURD HERD

Understand that nobody around here says you *have* to have a Red Line bike. But to be realistic, it would be dang near un-American to avoid *all* the Red Line products for very long.

Take the Red Line forks for example. There should be a set of them in the Smithsonian. They are a legend all by themselves. They were the very first tubular forks available to the equipment-starved pioneers of BMX. When they were introduced they instantly became one of those I-can't-live-another-minute-

The Red Line MX-II in all its finery. If this were a car it would be a Ferrari.

without-one-o'-them-suckers type of products.

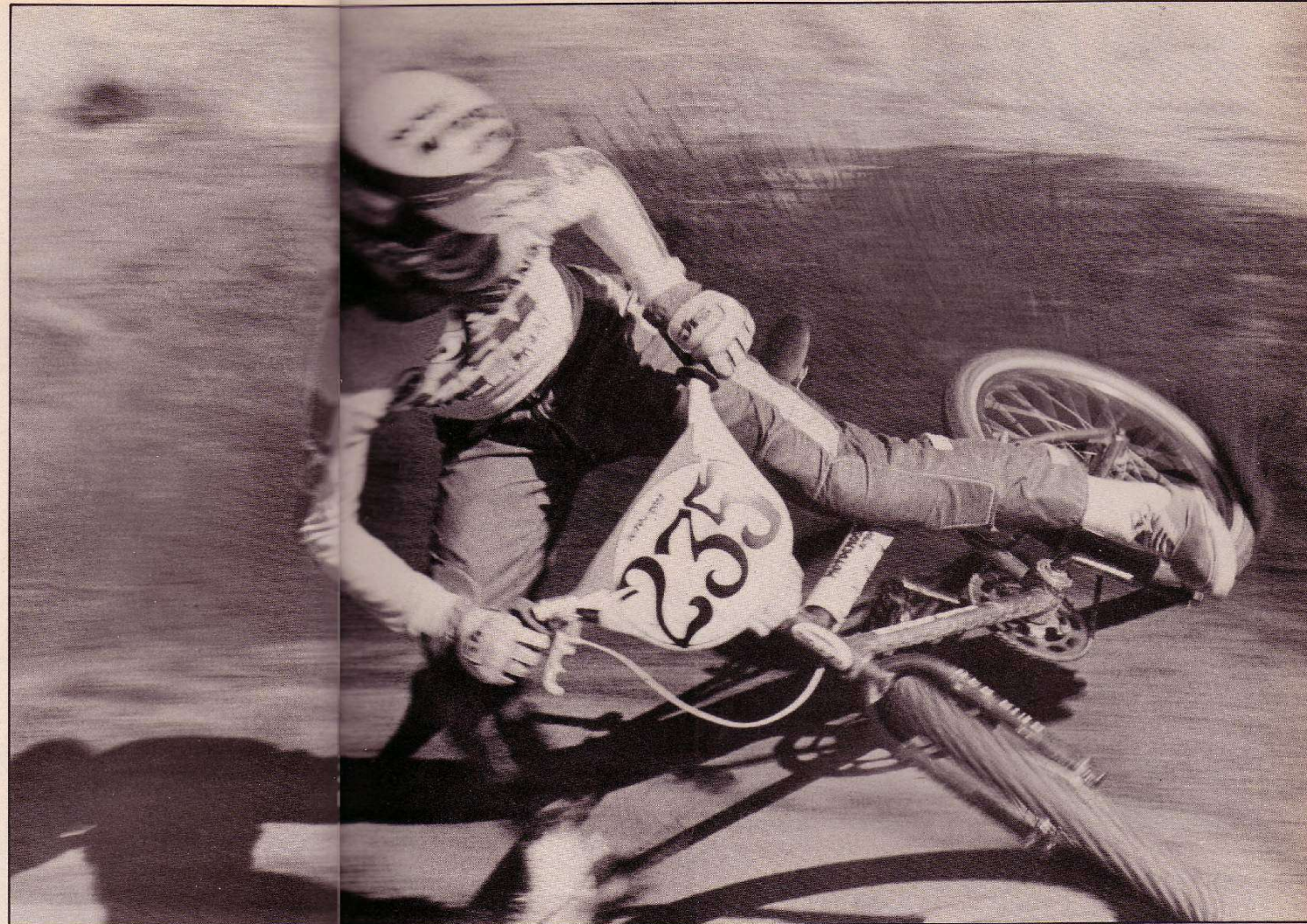
Next came the Red Line double-clamp chrome-moly gooseneck, and *nobody* had ever seen anything like that before!

Then, a little later on down the road, came the Red Line V bars. Man, if I had a nickel for every one of those that have been sold, I'd be poopin' in tall cotton.

Now if you haven't, at one time or another, had at *least* one of these Red Line products on your bike, then you must have just fell off the turnip truck.

If those steps up the staircase of BMX technology haven't impressed you sufficiently, then how about the Red Line Pro Line frame with its 5 inch head tube? Or how about the Red Line Pro Line forks which are heat-treated and shot-peened for additional strength and less weight? You've gotta admit that these are some far out products.

But if you *still* refuse to admit that this is pretty impressive stuff, then take



a look at Red Line's brand new cold-forged aluminum and chrome-moly gooseneck. Your brains will fall out.

To put this whole thing in its proper perspective, Red Line Engineering is a state-of-the-art manufacturer.

And with that brief historical overview, we come smack dab up against Red Line's newest project . . . the MX-II. And once again we find Red Line blazing trails for American BMX manufacturers. Only this time, instead of coming out with some innovative new product, they are messing with the *entire* bicycle manufacturing process.

In order to fully assemble a Red Line bike for shipment, parts have to come from 15 or 20 different suppliers. This is a bugger because if there is even one spoke missing, or one supplier doesn't supply, the bike can't be shipped. If this happens with thousands of bikes being shipped each month . . . you got big trubs, boy.

Keeping all the different components coming in on time from all the different suppliers; keeping the fabrication of frames, forks, bars, and goosenecks on schedule and at top quality; and keeping the shipping department running

Bonzai Buff, slideways on the MX-II.

smoothly . . . is a lot like juggling 15 or 20 balls, tap dancing, and whistling "Okie From Muskogee" all at the same time.

So, what Linn Kastan, the Big Honcho at Red Line Engineering, decided to do was contract with the Kawamura Cycle Company in Japan to do the whole enchilada . . . or the whole egg too yung, as the case might be.

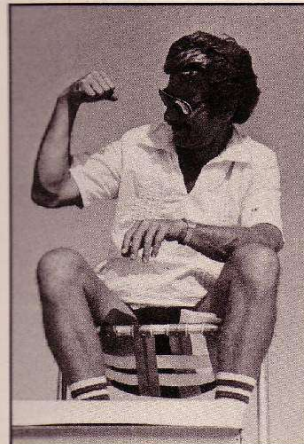
He chose Kawamura because they already produce some of the finest

RED LINE MX-II

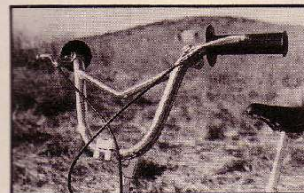


Insanity from Jones. He sure knows how to wring out a bike. The MX-II did not tweak, twink, bend, break, seize, rust, bust, or collect dust.

bicycles in the world—like the top grades of Nishiki and Azuki 10-speeds—and he absolutely wanted the Red Line quality maintained, and because Kawamura is a huge company—about the size of the Schwinn Bicycle Company



Linn Kastan, layed-back low-rider type owner of Red Line Engineering.



Red Line V bars. These jobs sell better than toilet paper.

over here—and therefore has tons of clout. In other words, suppliers *always* supply to Kawamura.

But this wasn't quite enough for Linn Kastan who, despite his layed-back low-rider image, is a fussy and meticulous kind of guy. To insure MAX quality construction he packed up six enormous Linde heli-arc welding machines and about a ton of American welding rod, which according to Linn are superior to Japanese machines and rod, and buzzed on over to Japan to teach the Kawamura welders how to heli-arc American style.

And what you see on these pages is the result: a class, full-on, fire-breathing, racing machine. And max quality as befits a product with the hefty Red Line name on it.

JMC DOES IT AGAIN!

Ask Harry Leary



FRAME FEATURES

- Elliptical Tubing
- All 4130 Chrome-Moly
- Long Frame 3lbs 14 oz.
- Short frame 3 lbs. 8 oz.
- All Heliarc Welded
- Options available:

SM. FRAME/LG. BOTTOM BRACKET
SM. FRAME/SM. BOTTOM BRACKET
LG. FRAME/LG. BOTTOM BRACKET
LG. FRAME/SM. BOTTOM BRACKET



FORK FEATURES

- All 4130 Chrome-Moly
- Heat-treated stress-relieved
- 1 lb 5 3/4 oz.
- Heliarc Welded (TiG)
- Streamline tubing

COLORS AVAILABLE

CANDY APPLE RED
CANDY APPLE BLUE
JMC WHITE

DEALERS AND DISTRIBUTORS CONTACT
JM CYCLERY • 164 S. Irwindale Ave • Azusa, CA 91702 • (213) 969-1915

SEE OUR TEST IN THE JULY '79 ISSUE OF BICYCLE MOTOCROSS ACTION.



BMX AT ITS BEST

BMX Mail-Order Catalog—\$1.00
(\$1.00 refundable on first order of \$10.00 or more)

We'll ship C.O.D. within 24 hours (upon availability)

Byron's Bicycle Shop
299 Glenwood Lansing Road
Glenwood, Ill. 60425 • (312) 758-4500



When you're serious... Only the best is good enough.

Red Line introduces the New MX-3-700 Series bicycles. The MX-3-700 has an all cro-moly frame, fork and V-bar; a unit rear hub; Sun Tour VX crank and a Red Line Super Pro-Line stem.



Greg Hill

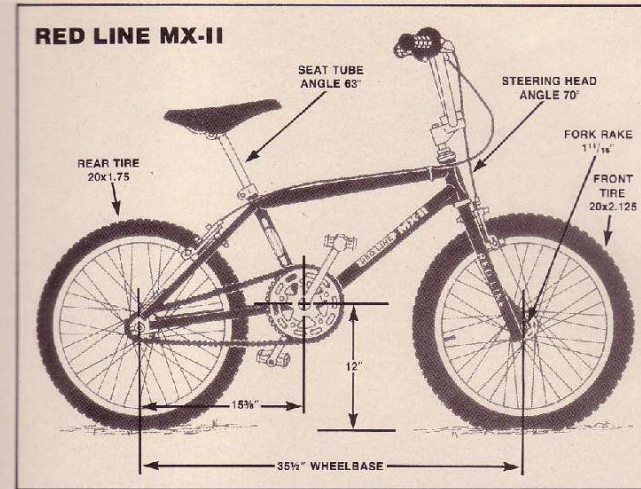


Check out the new MX-3-700 bicycles in White, Red, Yellow, Black and Blue at your local dealer. They're from Red Line...What more do you need to know.

Note: CPSC equipment included but not shown. Pads not included.

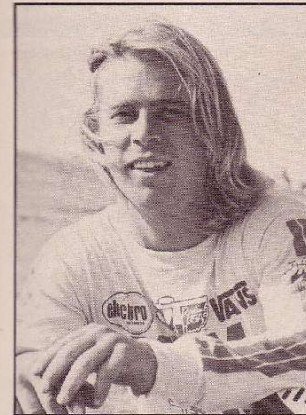
Jeff Rimmer

RED LINE MX-II



RED LINE MX-II SPECIFICATIONS

FINISHES: Blue, red, white, black, yellow
WEIGHT: 26.7 pounds
RETAIL COST: Approximately \$265 on the West Coast, \$280 on the East Coast due to shipping costs
FRAME: Red Line MX-II constructed with 4130 chrome-moly, hell-arc welded
FORKS: Red Line chrome-moly leading axle
HANDLEBARS: Red Line Micro Line chrome-moly V bars
GRIPS: OGI Mach
STEM: Red Line cold-forged aluminum with chrome-moly stem
RIMS: Ukai box aluminum
SPOKES: .080/36
HUBS: Suzue large-flange aluminum
BRAKES: Dia-Compe side-pulls front and rear
TIRES: Cheng Shin knobblies
PEDALS: KKT RTE-B chrome-moly shaft
CRANKS: Sugino 175mm (6 1/2 inches) BMX-2 forged steel one-piece
FRONT SPROCKET: Sugino spider with Sugino aluminum 44T sprocket
REAR SPROCKET: Sun Tour freewheel 16T
SEAT: Taihei unpadded racing saddle
SEAT POST: Fluted aluminum



Building Leapin' Jones...back in the saddle again, testing for the Most Factory Magazine.



Even our token midget, Robert Enrich, could get stylish on it.



The fab new cold-forged aluminum and chrome-moly Red Line stem.

But one thing we want to get straight off is that the MX-II is not a bike for everybody. If you're in the general area of 10 to 15 years old, want a full-tilt motocross bike, and have the bucks... then don't even think about it, go get one. Heck, the snob appeal of the Red Line name is almost worth the price by itself.

But if you're one of them long gangly dudes boys turn into at about 16 years of age, then forget the MX-II. It's too short and the Micro Line bars are too

RED LINE MX-II



Buff at full grunt. It turned, it jumped, it looked good...



Pancaked perfection by the master of the tabletop...BLJ. The MX-II is one tough cookie.



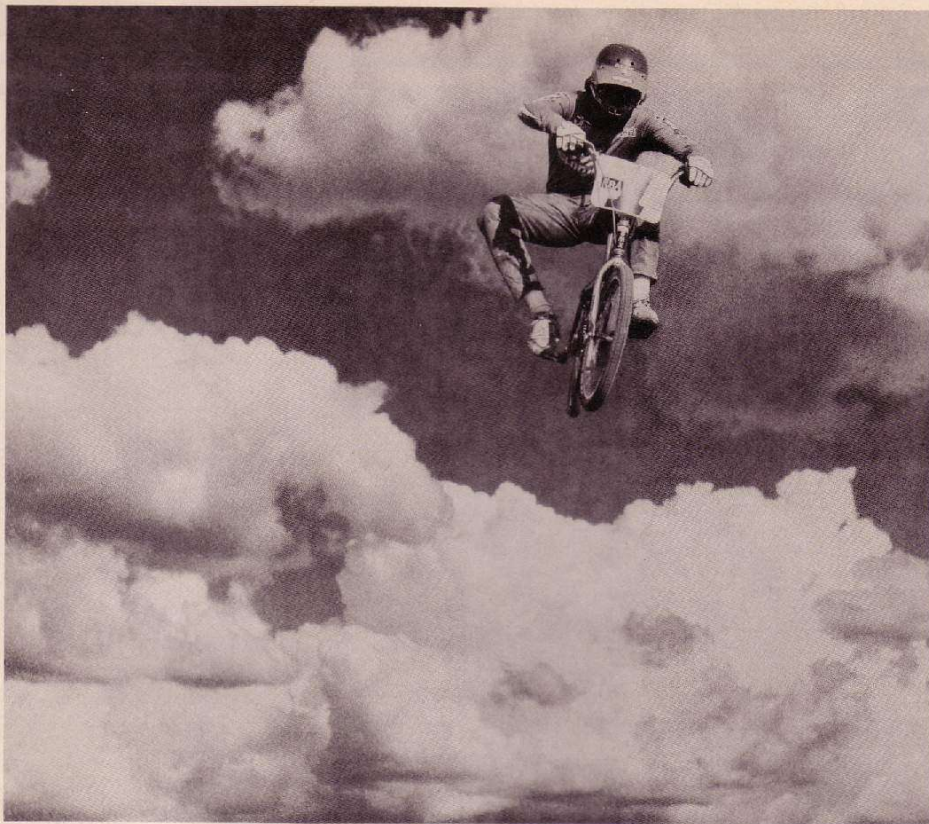
R.L., whuppin' it on.



A Red Line is like a Husqvarna...it makes you look good.



Buff got pretty rad on the Red Line.



TRICK RIDE BY BOBBY ENCINAS. TRICK HELMET BY PRO-TEC.

People tell Bobby Encinas that he's got rocks in his head for trying a stunt like this.

And, without a good helmet, that's exactly what he would have.

No wonder Bobby rides with the Pro-tec™ BMX helmet.

This helmet is strong enough to come bouncing back from even the worst wipe-out. Yet it's surprisingly lightweight. Less than 16 ounces.

That's about two pounds less than the average motorcycle-type helmet. And that's two less pounds you have to drag across the finish line.

Of course, it takes more than light weight and strength to impress

Bobby Encinas. It takes comfort.

That's another thing the Pro-tec BMX helmet has plenty of.

It has two layers of shock-



absorbing foam for extra cushioning. Plenty of ventilation ports to help you keep your cool. And the Pro-tec BMX helmet doesn't block your hearing. So you can keep an ear out for riders coming up from behind.

All in all, there's no better helmet for BMX than Pro-tec.

So don't be swayed by some hot-dog looking motorcycle helmet the next time you buy headgear.

Instead, do what Bobby Encinas does.

Use your head.

Pro-tec™ inc.

11108 Northrup Way, Bellevue, WA 98004 / (206) 828-6595

RED LINE MX-II

low. Instead, go for a Pro Line frame and bars. They are exactly dialed-in for your size bod.

The MX-II geometry takes a bit of getting used to. At first it feels too light in front, too easy to loop. This is caused by the short (35½ inch) wheelbase and the relatively short forward cant of the Red Line gooseneck.

Thirty minutes to adapt to the MX-II's eccentricities and you're ready to cut loose on a track or down at the local vacant lot thrashin' area.

This is when you start to find out why the Red Line name has so much pure snob appeal. It comes from integrity of manufacture, innovation of design, a well thought out compliment of components, and a head-turner appearance.

Still and all, the MX-II is not without its lapses. Consider: The brake levers need more bend. You have to reach over them. Consider: The grips are too hard. They *thrash* on your hands. Consider: The MX-II could have enjoyed the decidedly superior structural advantage of the Pro Line's 5 inch steering head. But it only has a 4 inch steering head, like most other BMX bikes.

If we were going to set this bike up

for flat out, spare-no-expense racing, we'd change those few things and a couple others. We'd pull the front call-



Check the trick tabs on the Dia-Compe calipers. They stop forward whip, make braking more precise.

per brake assembly and switch the rear to an under-the-grip lever or to the new Haro Handle set up. For grips we'd go with Grab Ons or Oakleys. And we'd switch to Competition II or Cycle Pro or the new IRC skinwall racing tires (2.125 front and 1.75 rear, natch). But don't let this throw you. You can take a box-stock MX-II down to the track and have a machine that is competitive with the best.

The Red Line MX-II will compete very strongly with the BMX Products Supergoose. Both are top quality, slightly heavy duty (one-piece cranks instead of aluminum pedal arms), racing bikes. Both have top notch original equipment throughout. Both come from big name, well respected manufacturers. Both sell for about the same bucks.

When you compare the two it comes down to whether you're a big dude or a medium size dude. Big dudes go for the Supergoose because of its longer wheelbase. Medium size dudes (up to about 15 years old) go for the Red Line because of the class V bars and super new Red Line stem.

You pays your money and you takes your choice. ★

BULLSEYE FOR BMX!

HUBS AND BOTTOM BRACKETS...
TOUGH, SIMPLE, SLICK AND
BEAUTIFUL

Ball Bracket for American frames with sealed bearings and nickel chrome-moly spindle



Front and Rear Hubs with replaceable sealed bearings



Roller Bracket for threaded frames with sealed bearings and nickel chrome-moly spindle



Manufactured by:

DURHAM BICYCLES

3944 Marathon Street, Los Angeles, CA 90029 • (213) 664-4534 • Dealers and Distributors Nationwide

THE KING AND THE KINGS OF BMX

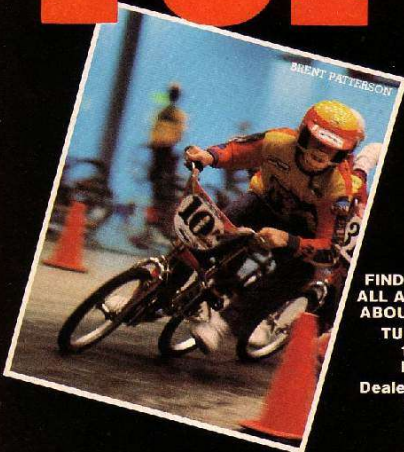
...AND THE NEW KING OF KINGS
COMING SOON!



- BARS WILL BEND BEFORE TUF-NECK RELEASES ITS VISE-LIKE GRIP
- AVAILABLE IN BLUE, RED, GOLD, SILVER AND BLACK

- WILL NOT BEND, BREAK OR CRACK
- 100% UNCONDITIONALLY GUARANTEED

TUF-NECK®

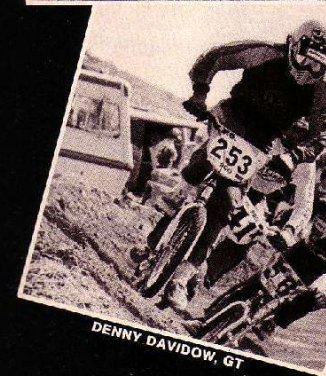
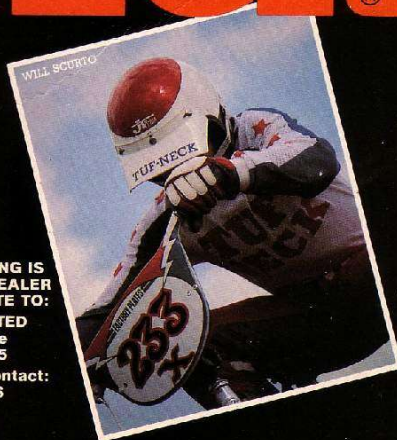


**TUF
 NECK**

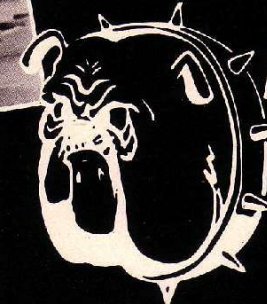
FIND OUT WHAT BEING KING IS ALL ABOUT...ASK YOUR DEALER ABOUT TUF-NECK OR WRITE TO:

TUF-NECK, INCORPORATED
 1023 Twin Canyon Lane
 Diamond Bar, CA 91765

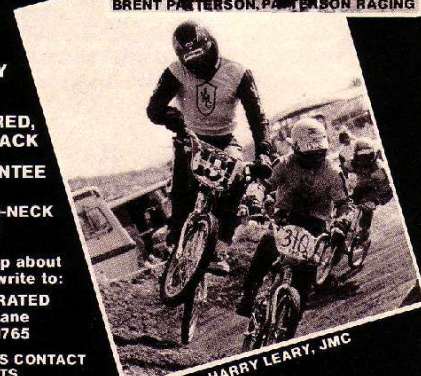
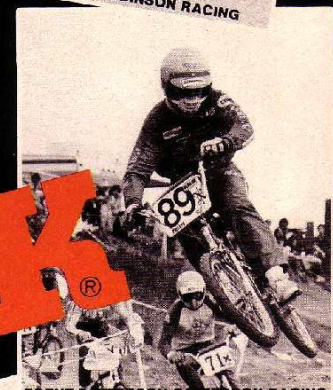
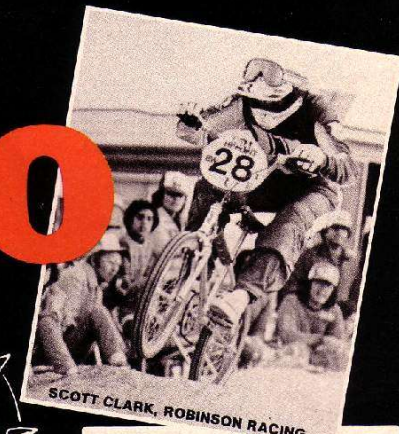
Dealers and Distributors contact:
 CYCLE COMPONENTS
 P.O. Box 4667
 El Monte, CA 91734
 (213) 686-2194



PRO



NECK®



CHROME-MOLY
 STEM
 COLORS: BLUE, RED,
 GOLD, SILVER, BLACK
 ONE YEAR GUARANTEE

If it isn't stamped PRO-NECK
 it isn't the KING
 Ask your local bike shop about
 the new PRO-NECK or write to:
 TUF-NECK, INCORPORATED
 1023 Twin Canyon Lane
 Diamond Bar, CA 91765
 DEALERS AND DISTRIBUTORS CONTACT
 CYCLE COMPONENTS

HARRY LEARY, JMC

SE★ABA
HAULIN' BANANAS AT THE

MINI-NATIONALS
WORLD'S GNARLIEST BMX TRACK



Mike King and Kyle Fleming. What style. Top two spots in the 9-10 open.

Ask anybody who has ever raced there.

Ask the Pro's who have raced everywhere.

Ask the media people who have covered major BMX events from Craigmear to Tacoma to Amarillo.

They'll all tell you the same thing: Corona is king. It is the fastest, gnarliest, most challenging, most fun BMX track there is. This is gospel.

When you finish a moto at Corona, there is no doubt in your mind that you just did everything that can be done on a BMX track. Your first inclination when you cross the finish line is to get back to the start so you can do it again. Corona is wild and wooly and a total gas. Corona boggles your mind.

The starting gate is at the very peak of a hill. The starting straight is wide enough to handle an entire moto, elbow

halfway down that would be considered mild if you were traveling at normal racing speeds. But you are not going at normal speeds. The additive effect of the downhill run and max power to the pedals pushes speeds well up into the white knuckle range. At these speeds, the jump is not mild. In fact, nothing about Corona is mild.

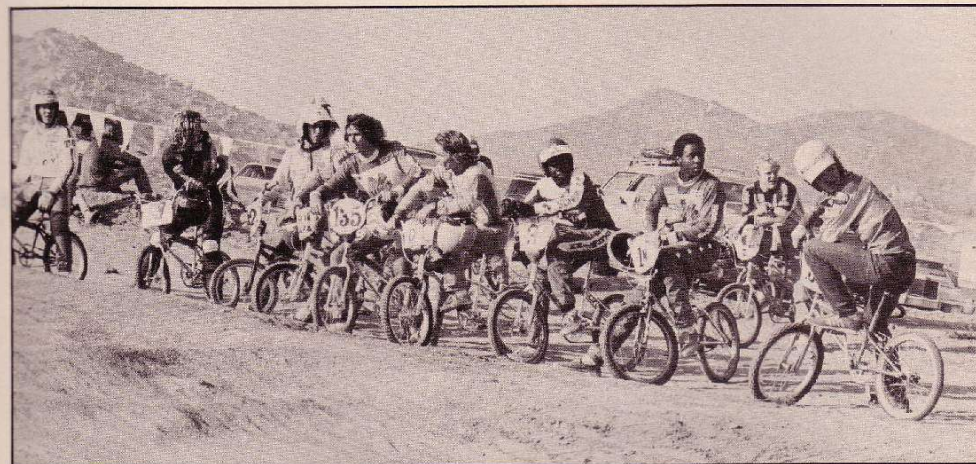
There is a long left-hand sweeper at the bottom of the starting straight. You go through this turn much like Jay Springsteen would take his Harley through the sweepers at San Jose at full wick. Except for one thing. Just short of the sweeper, right at the point where you pass through the sound barrier, there is a rise. With just enough lift to un-weight you. Just when you are praying that the knobs on your tires will hold against the incredible centrifugal force of the Corona sweeper, you hit

the track is just as hectic as what was just described. Racing Corona is a lot like the first time your parents catch you looking at dirty pictures . . . you've got to experience it to believe it.

At each of their last few national events, the ABA has introduced a major change in their racing procedures.

Back at the Amarillo race they created Trophy Dashes for all age groups instead of just for the older riders. This rule suddenly opened the possibility of winning the ABA National No. 1 plate to all ages.

At their Tacoma race the ABA introduced a new Pro contingency program. The way it worked was that before the race the Pro's and their bikes would be scrutinized to verify which contingencies they qualified for. Then after the race the ABA would send official letters to the companies



This bunch of rowdies includes some of the heaviest dudes you're likely to come across at a BMX track. Recognize any of 'em?

to elbow, with room to spare. In other words, if you've got the hair to go for it, you've got the space.

The starting straight is 150 yards long and all downhill. There is a jump about

this rise. Now this is a real thrill.

We could go on about the full-tilt-bozo aspects of the Corona track, but in the interests of time and space, suffice it to say that the rest of

who owed money to the winners. The ABA also managed to bring in almost double the total amount of contingencies offered to the Pro's.

At Corona the ABA introduced yet

CORONA

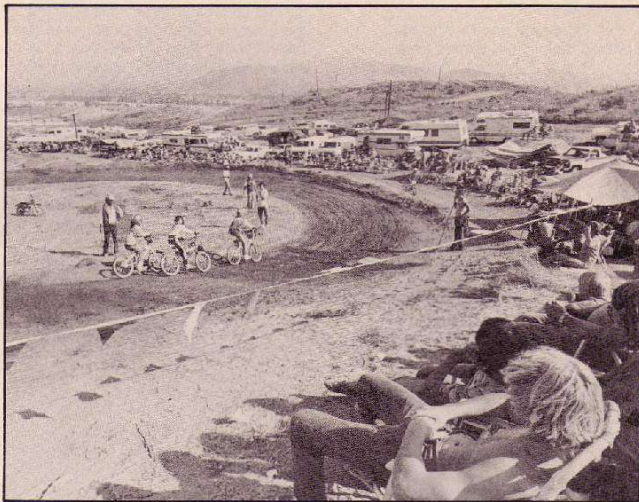
another improvement in procedures. They separated the Pro's from the amateur classes. The Pro's used to be able to enter the 16 expert and 15 and over open classes, but not any more. There will now be two classes just for Pro's; the Pro Money class where all the bucks are on the line, and the Pro Trophy class.

From here on out, if a rider enters an ABA national event as a Pro, he cannot go back to the amateur classes.

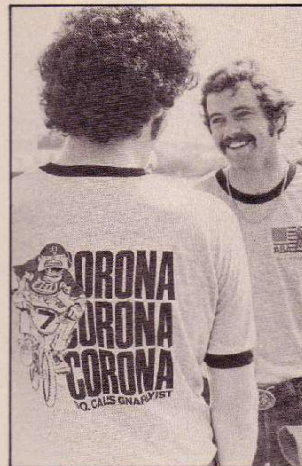
The Pro's used to dominate all the classes they entered. Now the 16 experts have a better shot at the brass. And the Pro's we've talked to didn't think the old system was quite fair anyway. So it would seem that the ABA has made another careful improvement in the sport that is great for all concerned.

Speaking of the Pro's, eight months ago, when nobody had ever heard of Toby Henderson, we told everybody to watch out for that boy.

In the last four or five months, the Coca Cola Cowboy has picked up a full blown factory ride from Raleigh;



Corona is a first class spectatin' track.

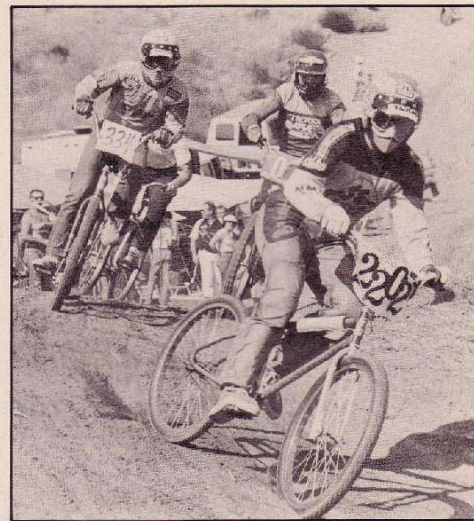


These two galoots own RRS. They also prep'd the track. They also sold T-shirts like the ones they've got on.



In the micro-midget 5 year old class, Troy Kelly twinkle-toed in for a heavy duty 2nd place finish.

CORONA TRIVIA: THE OLD "JUMP WHERE THERE IS NO JUMP" TRICK.



At the entrance to the first wild wobbly sweeper, In one of the qualifying motos for ballooners, Whilst steaming along at a quite brisk pace for this race, The infamous, devil-may-care, notorious "Old Man of BMX," The legend-in-his-own-time owner of SE Racing, The one and only Scot Breithaupt,

Did what no other human bean has ever done (at that spot, on that track, at an ABA national). What he did was the mysterious Jump Where There Is No Jump Trick!

Proving once and for all that the old turkeys are just as tough as these young whippersnappers . . . or just as dumb.



Teammates, buddies, and fearsome competitors Mike Scurto and Lonnie Tatton. But Doozer Trevino beat 'em both. Tough buns, you guys.

traveled all over the U.S. of A.; made the cover of the Most Factory Magazine along with his Raleigh racin' teammate, ol' Jeffrey Bottema; and won the Pro money class at the ABA/SE Mini-National. Translated into dollars, Toby scarfed on about 1200 frogskins (counting contingency money) at Corona.

NOTE: Yesterday, at the posh BMXA offices with luscious foxes working everywhere, Bottema and Henderson stopped by. They just wanted to say adios for a while. They were leaving the next day for Europe on some kind of BMX promotional trip for Raleigh. (Heavy sigh) Those guys sure lead a tough life. 'Course, now that I think about it, we still have the foxes. -Oz

continued on page 51



Look out if you score a big win 'cause all the grown-ups come over and thrash on you.

TITAN UP!



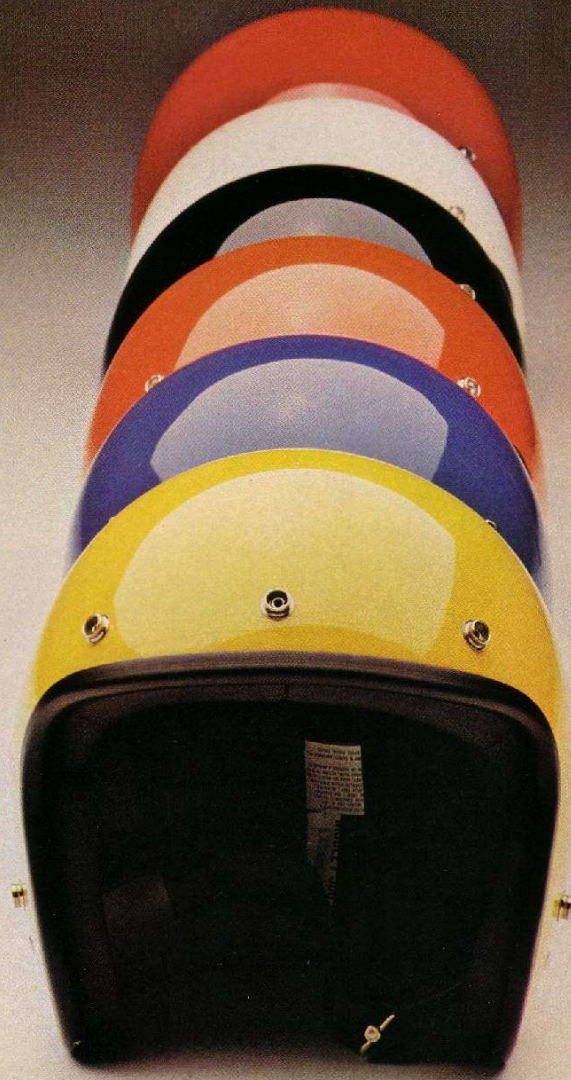
Built tough to take it tough! High impact polycarbonate shell. Thick foam-lined inside. Department of Transportation approved. Plus a palette of colors—red, blue, orange, black, yellow or bright white.

Don't mess with your head. Titan up!

ISE

International Sport Equipment
2405 Glover Place
Los Angeles, CA 90031
(213) 227-5757

Dealer & Distributor Inquiries Invited



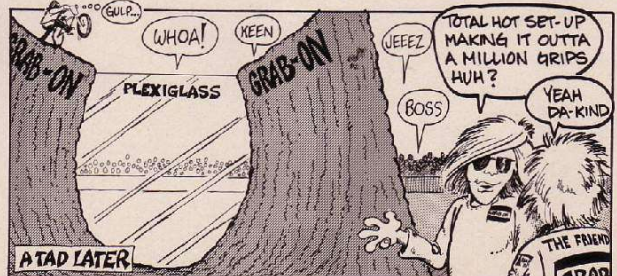
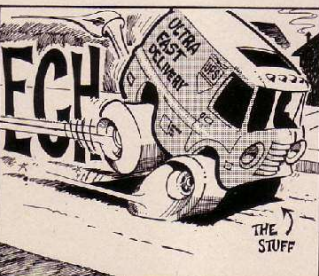
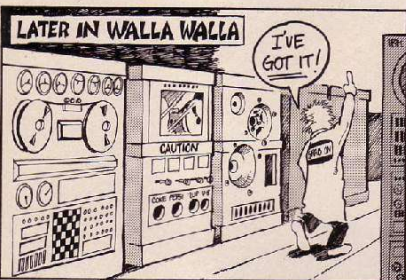
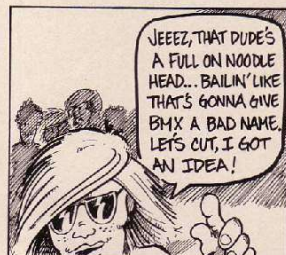
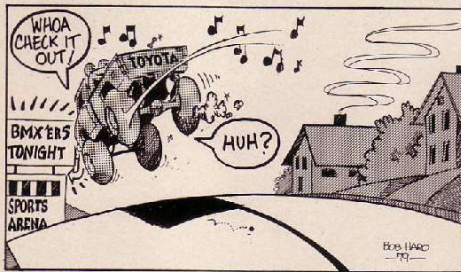


These are the heaviest of the heaviest; Greg Hill, Stu, the Corona Kid, Anthony Sewell, Toby Henderson, Bryan Curnell, and Brent Patterson.

BICYCLE MOTOCROSS ACTION

EPISODES OF

THE GRAB ON KID PRODUCTS



MANUFACTURED BY NEOTECH • Route 4 • Walla Walla • WA 99362 • (509) 529-9800

CORONA

continued from page 46

There are a few other dudes who made their presence known at Corona.

Like Anthony Sewell who won the Pro trophy class and the 15 and over Trophy Dash. Anthony finally figured out how to move as hastily on a dirt track as he does on indoor tracks, and he moves with extreme haste indoors.

In the 12 expert, 11-12 open, and the 11-12 Trophy Dash, a terrible thing happened: an avalanche buried everybody that entered. Yeah... Richie tripled!

Another triple win was nailed together by Jason Jensen. Jason so dominates his age group that it borders on tyranny. This little guy makes some pretty big footprints.

But the real star of the day was the World's Gnarliest BMX Track; Corona.

Pre-race prep was attended to with meticulous attention to detail by the local good guys from Riverside-Redlands Schwinn (RRS). And they really did a number on it. Corona was decked out like a 14 year old girl on her first date.

The big hairy first turn sweeper was nursemaided all day long by big hairy Vance Patterson, the owner of Patterson Racing Products. His careful watering and raking kept traction so superb that a competent rider could



Ya' snooze, ya' lose. But the Avalanche does not snooze.



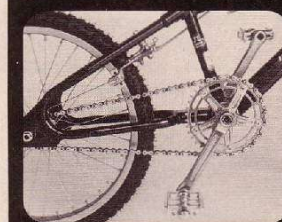
Kim Johnson (No. 85) has totally dominated the senior powder puff class at about every major race there ever was and this is the first time her picture has been in BMXA. Shows ya' what happens when male Chauvinist pigs choose all the photos.



PRO SERIES



(C.F.S.C. approved reflectors and chain guard included.)



BIKE KITS

SE Racing Pro Series Bike Kits available in P.K. Ripper, Mini-Ripper, GJS, Race Inc., STR and O.M. 26" Models. For more information on the full line of SE Racing bikes, Actionwear, safety equipment and components, contact us.

Kids, send \$1.00 for 1 year subscription to BMX BUGLE c/o

SE RACING
1667 E. 28th Street
Signal Hill, CA 90806

Dealers, call Scot
(213) 426-6461





You can spot the 16 novices a mile away ... they're always over their heads and flat haulin' freight.



If you want to see an all-American lookin' kid, check Doug Davis without his helmet. Tough, too. And a neat guy. And quick. 1st 10 expert. 1st 9 and 10 Trophy Dash.



The 10 novice class. Check the concentration. These guys are really gettin' into it.

SE/ABA MINI-NATIONALS CORONA RESULTS

- | | |
|--|---|
| <p>OPEN PRO
Toby Henderson
Kevin McNeil
Byran Friday</p> <p>PRO TROPHY
Anthony Sewell
Denny Davidow
Frank Post</p> <p>16 EXPERT
Steve Shobert
Dennis Kishiyama
Bobby Creek</p> <p>16 NOVICE
Jim Pratt
Keith Lawson
Tim Roe</p> <p>15 OVER TROPHY DASH
Anthony Sewell</p> <p>15 OVER OPEN
Steve Shobert
Joe Aguilera
Robert St. Germain</p> <p>15 EXPERT
Mike Bush
Steve Glvens
Joe Claveau</p> <p>15 NOVICE
Mike Miranda
Mike Fregeau
Cary Brunson</p> <p>13 & 14 TROPHY DASH
Rod Beckering</p> <p>13 & 14 OPEN
Lee Medlin
Darrell Yeargain
Eddy King</p> <p>14 EXPERT
Rod Beckering
Eddy King
Lee Medlin</p> <p>14 NOVICE
Greg Keyes
Frank Morninghan
Ron Kreaher</p> <p>13 EXPERT
Mike Aguilera
Doug Gaugemaler
Will Scurto</p> <p>13 NOVICE
James Hayes
Andy Zizow
Mike Casteel</p> <p>11 & 12 TROPHY DASH
Richie Anderson</p> <p>11 & 12 OPEN
Richie Anderson
Theodore Serrano
Jon Anderson</p> <p>12 EXPERT
Richie Anderson
Jon Anderson
Theodore Serrano</p> <p>12 NOVICE
Brian Ebert
Melvin Hayes
Larry Hess</p> <p>11 EXPERT
Geoff Rutherford
Gary Burnett
Brett Benson</p> | <p>11 NOVICE
George Gera
Darrel Foster
Robby Shockley</p> <p>9 & 10 TROPHY DASH
Doug Davis</p> <p>9 & 10 OPEN
Kyle Fleming
Mike King
Kevin Holm</p> <p>10 EXPERT
Doug Davis
Mike King
Kyle Fleming</p> <p>10 NOVICE
Walter Armendariz
Dan Strahan
Joe Wendt</p> <p>9 EXPERT
Dozer Trevino
Lomlie Talton
Mike Scurto</p> <p>9 NOVICE
Steve Hayes
Frankie Gonzales
Robert Deckter</p> <p>8 & UNDER TROPHY DASH
Jason Jensen</p> <p>8 & UNDER OPEN
Jason Jensen
Shane Martin
Steve Hayes</p> <p>8 YEAR OLDS
Jason Jensen
Steve Hutchinson
Robert Emrich</p> <p>7 YEAR OLDS
Dustin Drumm
Rinker Marietti
Dean Bennett</p> <p>6 YEAR OLDS
Shon Tarver
Aaron Stevens
Toby Williams</p> <p>5 YEAR OLDS
Damon Wheeler
Troy Kelly
Teddy Gillette</p> <p>SENIOR POWDER PUFFS
Kim Johnson
Lesley Burley
Jane Wilkinson</p> <p>INTERMEDIATE POWDER PUFFS
Sue Gingrich
Sera Rutledge
Rhonda Trower</p> <p>CRUISERS
Scott Brethaupt
Kevin Harlow
Evan Teske</p> <p>SIDEACKS
David Crompton &
Robert Braeseny
Bryan Duorshak &
Robert Edmonson
Chris Foyer &
Eddie Stovine</p> <p>TEAM TROPHY
Torker</p> |
|--|---|

BIKECOLOGY BIKE SHOPS NEW SPRING MX CATALOG

HOT OFF THE PRESS! FREE!
24 pages cramp-packed with all our juicy top quality BMX products plus...



NEW! IN OUR SPRING '80 EDITION

New Diamond Back Cro-Mo kits
New Red Line MX II Kits
Cycle Pro Macho Frameset
New Steel "V" Bars
New Sun Tour Pedals
Sugino's aluminum Spider
KKT RT Pedals in colors

New SHOTGUN Seat
New Improved Tool Kit
New Cycle Pro Racing Gloves
Pro Tec Helmet
Shimano Freehub
Tuff Wheel II
and more, more

Spring '80 catalog sent automatically to everyone who received our Summer '79 catalog. Not necessary to order Spring edition separately.

Four Pro MX shops in the Los Angeles Area

9101 Olympic Blvd., Beverly Hills
5179 Overland Ave., Culver City
1515 Wilshire Blvd., Santa Monica
4214 Lincoln Blvd., Marina del Rey

Open 7 days:
M-F 10-7
Sat 9-5:30
Sun 10-5:00

BIKECOLOGY MX P.O. Box 1880-A Santa Monica, CA 90406

Yes! Rush me your FREE 24-page Spring '80 MX catalog.

Spring '80 catalog sent automatically to everyone who received our Summer '79 catalog. Not necessary to order Spring edition separately.

NAME _____

ADDRESS _____

CITY _____

STATE _____ ZIP _____

Allow 2-3 weeks for delivery

Jeff Whitbeck, the ABA Washington State Champion, came down to SoCal for a little on-the-job-training. He bombed in the semi's. Back to the drawing board.



Months ago we told you to watch that boy. Pro main finish line action: Toby's saying, "Come on legs . . . 1200 bucks . . . come on legs." Inches back is the Corona Kid, Kevin McNeal.

enter the sweeper flat out and actually drive to the inside, sometimes swooping as many as four or five other racers at a crack.

The Cereal Bowl, an abrupt bermed turn about one-third of the way down the Corona track had been modified by the addition of a small jump-dropoff thing at the exit end. This had a tendency to kick your rear wheel to the outside of the turn which made for some class stylin' photos.

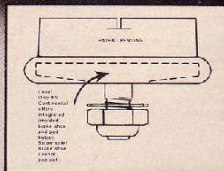
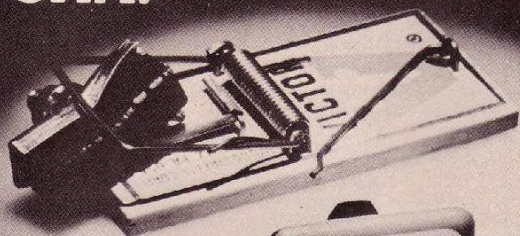
But there's a sad part to this whole thing too. There has been a persistent rumor around Corona recently that a tract of homes will be built where the track now stands. If the rumor is true, we are witnessing the beginning of the end of one of the greatest national tracks in BMX history.

If it happens, other tracks will replace Corona . . . but she'll sure leave a beautiful memory. ★

GOTCHA!



"THE CONTINENTAL"
MODEL KS-C



IT WAS HARD
TO BUILD A BETTER
MOUSETRAP ... BUT
WE DID IT.



WHEN IT'S YOUR SAFETY, INSIST ON
KOOL STOP ALL WEATHER BRAKE SHOES

For more information
contact sales agent.

CYCLE COMPONENTS
P.O. Box 4597
El Monte, CA 91734
(213) 696-2194

ORDER YOUR PANTS FROM THE "EGO BUILDERS."

#P-101—\$40.95 #K-101—\$74.95 (LETTERS EXTRA) (VERY SMALL SIZES AVAILABLE) #S-101—\$45.95 #S-102—\$62.95 (LETTERS EXTRA) #S-102—\$82.95 (STARS EXTRA)



LINING IN PANTS ADD \$6.00

HATS: \$3.95
(ADD \$1.00
IF ORDERED
SEPARATELY)

ALLOW 6-8 WEEKS
FOR DELIVERY.

NORMAL PANT SIZES: 22-34 WAIST (CALL FOR SPECIAL SIZING)

NYLON COLORS: RED, WHITE, BLUE, BLACK, YELLOW, ORANGE, BROWN

LEATHER COLORS: SEVENTEEN CONTRASTING COLORS AVAILABLE
(CALL FOR MORE INFO)

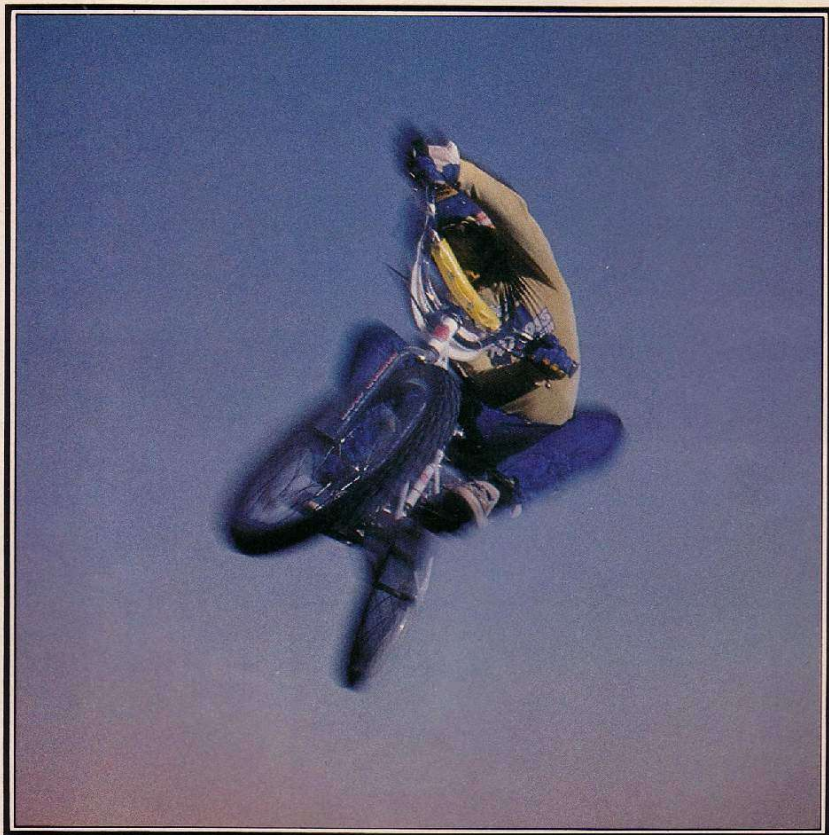
SPECIAL LETTERING AND STRIPES AVAILABLE.

FOR DETAILS AND COST WRITE OR CALL
(213) 699-2349 OR 695-3826

Send coupon with cashiers check or money order to:
VERA'S LEATHERS, 11511 E. Washington Blvd., Dept. BMXA, Whittier, CA 90606

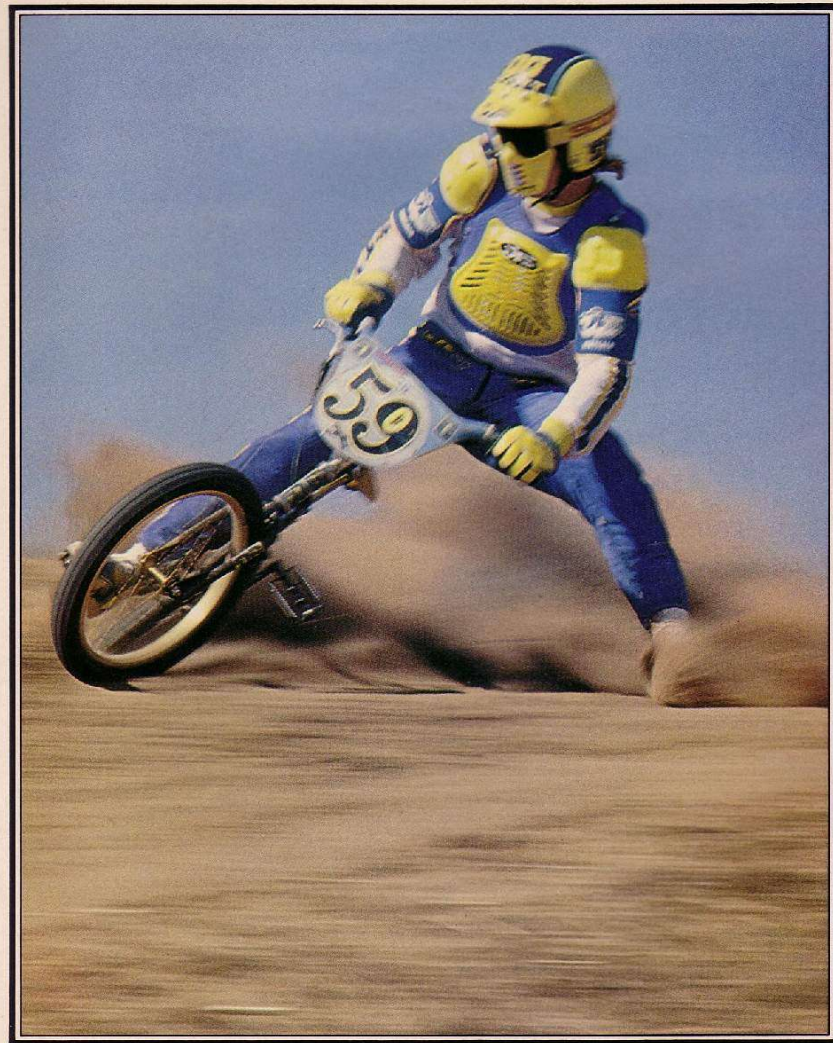
VERA'S		NAME _____		PHONE _____	
ADDRESS _____		CITY _____		STATE _____ ZIP _____	
PANT STYLE# _____		COLOR _____		WAIST SIZE _____ INSEAM _____	
HATS: QUANTITY AND COLORS _____		ADD \$3.50 SHIPPING AND HANDLING _____		CALIF. RESIDENTS ADD 6% SALES TAX _____	
TOTAL AMOUNT ENCLOSED \$ _____		DEALER DISCOUNTS AVAILABLE			

HOT SHOTS



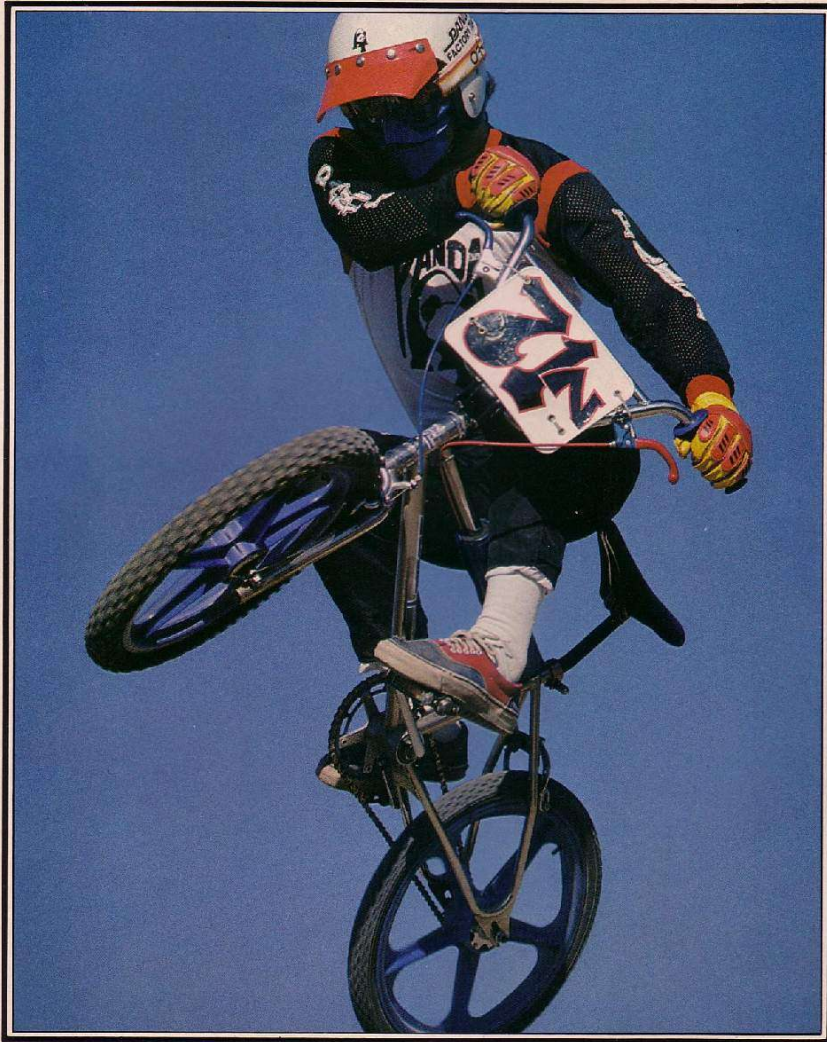
Fantasy fade . . . quantum leaps in BMX photography.

HOT SHOTS



Byron Friday . . . cuttin' mud.

HOT SHOTS



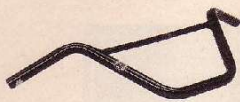
Wildman Frank Post . . . aggressive style.

HOT SHOTS

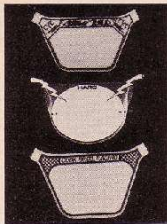


Building Leapin' Jones . . . classical tabletop from the BMXA photo archives.

WE'VE GOT EVERYTHING IT TAKES TO BUILD A WINNER



Race Inc. Handlebars
Strong T-6 hardened original race design. Feather light. Our most popular bend.



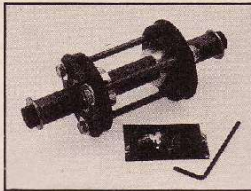
Number Plates
Super BMX racing number plates. Selection of Haro, Stormer BMX and Cook Bros. Racing designs.

Suntour Seat Clamp
Cold forged micro alloy. If we knew of a stronger clamp, this picture wouldn't be here. Anodized colors available.



Bullseye Conversion Spindle

Lightweight, sealed bearing. Engineered for reduced maintenance and long life. Red on silver foil "Bullseye" decal and wrench included.



C.Y.C. Panther

Tricked out in high-gloss black and gold. 4 chrome-molybdenum frametubes, matching Tange TX-1200 forks. Heat treated one-piece cranks, chrome-moly pedals, alloy wheels.



C.Y.C. Panther



Titan Helmet
D.O.T. approved high-impact polycarbonate shell with shock absorbent foam core. Sano styling, inexpensive in white, black, yellow, orange, blue and red.



Kingsbury Pedals
Non-slip sharp teeth. Light, patented design especially for off-street. Chrome-molybdenum shaft for toughness. Red, blue, black and yellow.

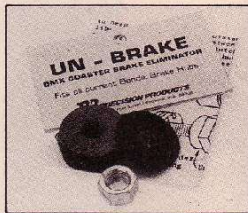
Kashimax MX Saddle

470 grams light, including BMX safety clamp with seat post stop. Ultra strong one-piece construction, factory machined and chamfered holes for extra lightness with no sharp edges. Unbreakable nylon base.



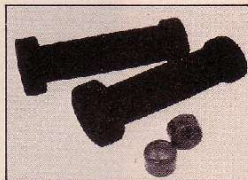
Un-Brake

Hot item. BMX coaster brake eliminator turns coaster brake into free hub in minutes. Fits all current Bendix Brake hubs.



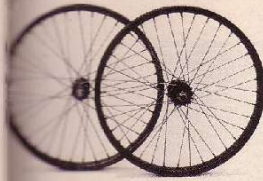
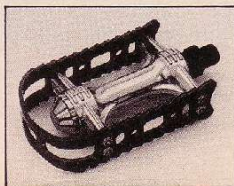
MX-1 Grab On's

Run what winners run. Special rubber compound for comfort and sure grip. End plugs included.



KKT Lightning Pedals

Concave grip surface, notched end plate and chrome molybdenum spindle add up to a non-slip pedal. Sealed bearings, alloy cage. Red, blue, gold.



Araya Wheel
Lightweight alloy rims with .080 spokes and Suzui hubs. The best you can buy.

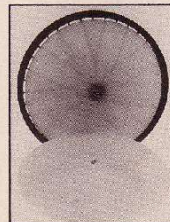
Pads

Protection where it counts. The latest pads for getting rad.



Wheel Covers

Protect expensive alloy wheels. Pedals, feet, other people's handlebars can't get jammed in spokes.

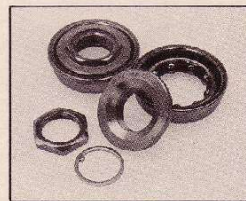


X-Caliber Seat Post Clamp

Original one-piece clamp of 6061-T6 aluminum. Allen wrench and decal included. Anodized in gold, red and blue.

Tange Bottom Bracket Set

The top quality bottom bracket set from Tange's MX II Group, for one-piece cranks. Encased roller bearings for easy care, long wear. Adjustable with a wrench.



Tuff-Neck Gooseneck

Unconditional 1-year guarantee not to bend or crack. No welds to break. Aluminum clamp, mild steel stem, precision finished surfaces, 4 allen-head clamp bolts, hardened hex wedge bolt. 1 3/4" forward cant. Red, blue, gold, silver, black.

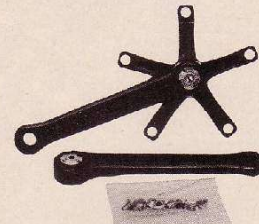
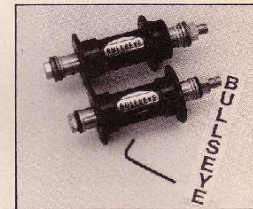


Jofa Rockguard
Protect teeth with our most popular guard. Hardware for mounting to helmet included. Red, blue, yellow, white.



Bullseye Hubs

Light and strong. Sealed bearing for long wear, low maintenance.

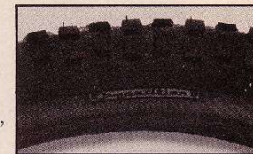


Dura-Ace Cranks by Shimano

You can't buy a stronger alloy crank. Six lengths available: 160, 165, 167.5, 170, 172.5 and 175 mm. "Shimano Equipped" MX decal and bolts included. Order red, blue, gold.

Competition II Tires

Hottest skinwall on the market, by Mitsubishi. Race-light nylon with moto-tough knobs in black, red, yellow, blue.



C.Y.C. Distributing stocks the best of everything it takes. So one call gets you into a warehouse full of everything you need to build winner after winner. Free freight over \$500.

Go ahead, dealer, try us now. Call toll-free and ask for anything. USA 1-800-421-1513; CA 1-800-262-1947; HI & AK call collect 1-213-538-2824.



WE BUILD WINNERS

C.Y.C. Distributing
P.O. Box 407, Hawthorne, CA 90250

HOT SHOTS



Greg Hill . . . gettin' rad.

HOT SHOTS



PK . . . rippin'.

**In a short time
we've left our mark**



Cycle Pro Snake Belly

In virtually every MX track throughout the world, you'll see this famous Snake Belly tread pattern. Cycle Pro in conjunction with National Tire Company, Ltd., the leading tire company in Japan, has developed this unique tread design which is self-cleaning, unbeatable on the straight-aways and corners like no other tire. Combining these qualities with the finest rubber available anywhere results in a tire which lasts longer and performs better.

Cycle Pro was not only the first to introduce this now often imitated tread

pattern, but was also the first to introduce a MX skin side tire in colors—red, blue and yellow.

We are happy to announce this Snake Belly tire is now available in a medium priced black wall.

Snake Belly tires really work best. Insist on Cycle Pro.

**Cycle
pro**®

WEST COAST CYCLE
8631 Hayden Place
Calver City, CA 90230
(213) 204-1660

PETTER CYCLE SUPPLY CO.
2875 S. Santa Fe Drive
Englewood, CO 80110
(303) 761-7383

LOUISVILLE CYCLE & SUPPLY CO.
4700 Almond Ave.
Louisville, KY 40221
(502) 361-2333

©79 WCC



**THE
HOTTEST
RACES...**

**THE
HOTTEST
RACERS...**

**THE
HOTTEST
ACTION...**

**...IN THE
HOTTEST
MAGAZINE**

**SUBSCRIBE
TODAY!**

**\$14.50 FOR
ONE FULL YEAR
—12 ISSUES**

**BICYCLE
MOTOCROSS
ACTION**

P.O. BOX 5277
TORRANCE,
CALIFORNIA 90510

\$14.50 FOR ONE FULL YEAR (12 ISSUES). Check enclosed. Canadian and Mexican subscriptions add \$3.00 for additional postage. Foreign subscriptions add \$4.00.

NAME (print) _____

ADDRESS _____

CITY _____

STATE _____ ZIP _____

Please allow 30 days to receive your first issue.

BICYCLE MOTOCROSS ACTION MAGAZINE'S

1979 NORA CUP

OFFICIAL ELECTION RESULTS

NO. 1 RACER
STU THOMSEN

NO. 1 TEAM
MONGOOSE



Well, motocross fans, it's complete; finished; through. The ballots are in. And counted. And tabulated. And correlated. And phew! That was a job. The re-

sponse was ferocious. And nobody tried to stuff the ballot box! Everything was fair and square and according to the rules.

So, after an entire day spent just counting the ballots, and another day
continued on page 71

Stu Thomsen has been one of the most powerful racers this sport has ever known.

WE CAN'T MAKE YOU GO ANY FASTER... BUT YOU'LL LOOK SO GOOD WHO CARES?



PERSONALIZED JERSEY LETTERING • \$1.00 PER LETTER

- 2 inch black letters
- permanent heat transfer
- no exchanges on personalized jerseys

TEAM REPLIC RACING JERSEY • \$13.95

- 100% cotton
- Cool, comfortable
- Adult sizes: S,M,L
- Youth sizes: S,M,L
- (Youth size jerseys tend to run small. Order next larger size.)

HARO FACTORY PLATES • \$9.95

- includes 4 ties and mounting instructions
- BMX team colors: blue and yellow

HARO WERKS NUMBERS • 50¢ EACH

- numbers 0 through 9
- self adhesive
- 6 inches tall
- black vinyl



12" FRAME PAD • \$3.95 - 9" CROSSBAR PAD • \$2.95 - DOUBLE CLAMP STEM PAD • \$2.95 - SET OF 3 PADS • \$8.95

- choice of red, blue, or yellow
- silk screened logos



PATCH HAT • \$5.95
• foam padded front
• one size fits all

WERKS HAT • \$6.50
• totally vented
• one size fits all

TRANSFER HAT • \$5.95
• foam padded front
• one size fits all

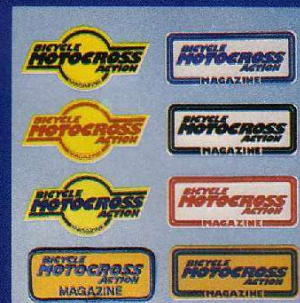


COLOR T-SHIRTS • \$6.95 EACH

- red or yellow
- top quality 100% cotton
- youth sizes: S,M,L
- adult sizes: S,M,L

ORIGINAL WHITE T-SHIRT • \$5.95

- heat transfer on front and back
- top quality 100% cotton
- youth sizes: S,M,L
- adult sizes: S,M,L



CIRCLE STICKER • 50¢ EACH • 3 PER \$1.00

- choice of black, red, or blue on yellow background
- 2-1/4 x 4-3/4 inches

LOGO PATCH • \$1.25 EACH

- gold and blue
- 2 x 4-3/4 inches

VISOR STICKERS • 50¢ EACH • 3 PER \$1.00

- choice of blue, black, or red on white background
- 2 x 5 inches

STICKER PATCH • \$1.25 EACH

- gold and blue
- 2 x 5 inches
- lasts through 5 washings or sew on

Mail this order form with your check or money order today.

ITEM(S) WANTED	QUANTITY	SIZE	COLOR	PRICE

U.S. Sales Co.

P.O. Box 3599
Redondo Beach, CA 90277
(213) 533-6048

NAME	SUB-TOTAL
ADDRESS	CALIF. RESIDENTS ADD 6% SALES TAX
CITY	ADD \$1.50 FOR POSTAGE & HANDLING FOREIGN ORDERS ADD \$2.50
STATE	ZIP
	TOTAL ENCLOSED

PLEASE ALLOW 2 TO 4 WEEKS FOR DELIVERY • NOW AVAILABLE AT YOUR LOCAL BIKE SHOP



RACE FACE GOGGLES
Protect those vulnerable parts from the radical action of BMX with the latest in total face protection. Featuring quick-change snap-on lenses and five dazzling colors. The special open cell foam filters out dust.

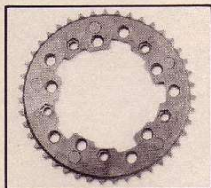
HATCH GLOVE STYLE 66

This blazin' hot glove was developed for gnarly off-road racing and offers super protection when gettin' crazy or just cruisin'. Stylish looking, quality workmanship and an affordable price make this BMX glove tough to beat! Available in all adult and children's sizes. Colors are red, white and blue or black, white and yellow.



RAD PAD

The perfect pad when gettin' rad, with zillions of rad colors too! Manufactured by Jchar of California. Gnarly, ain't it?

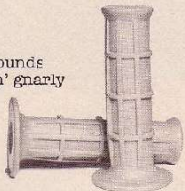


ADDICKS SPROCKET

The innovators of the quick-change sprocket. In popular sizes, 39-48, for chainin' your skoot in for even the most hectic tracks. Colors too! Red, blue, yellow and white.

FINISH LINE GRIPS

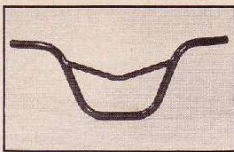
This grip from Neal Enterprises sounds like a winner already. When gettin' gnarly you need something to really hang on to and the Finish Line Grips are made of a new rubber-like material. Available in four blazing hot colors: blue, red, black and yellow.



Find all this race winning equipment at your local bike shop. If he doesn't have it, tell him to contact his distributor. Distributors only contact Alan F. Cohan Co.

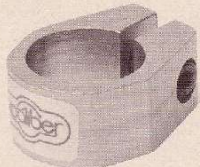
REPLICA V-BAR

Probably the last pair of bars you'll ever buy. Reeks of sano construction and quality. Willing and able to handle anything you throw at 'em. Totally hot colors available: red, blue and chrome. Manufactured by the Cebe Co.



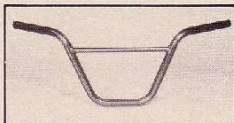
KCALIBER SEAT POST CLAMP

Sano new one-piece seat post clamp, made of anodized 6061-T6 aluminum. Available in three hot new colors: gold, red and blue.



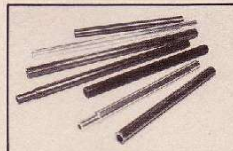
FLUTED HANDLEBAR

You know how tough those fluted seat posts are. Well, hold on to your shorts 'cause available now are sano lookin' 6061-T6 aluminum fluted bars to match. In five cool lookin' colors: red, blue, gold, black and silver. Manufactured by VD Products.



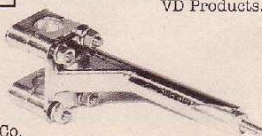
FLUTED SEAT POST

Can take the pounding of fast paced moto-xing and can handle it. (Meets CPSC marking requirements.) Gnarly colors too: red, blue, gold, black and silver 1 3/8" and 1 1/2" lengths and 7/8" and 13/16" diameters available in bullet-proof 6061-T6 aluminum. Manufactured by VD Products.



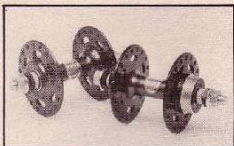
SLIM LINE STEM

Boss lookin' and primo construction make this stem a stand-out from the rest. Dyno lookin' colors: gold, red, blue and chrome. Manufactured by the Cebe Co.



ACS STOKER HUB

Stoker hub? Should be more like smoker hub, 'cause these hubs will help you blaze on the comp. Maintenance-free grade 100 nichrome precision sealed-bearing. So cool colors too: so-red, so-blue, so-gold and silver.



THIS IS THE KIND OF STUFF WINNERS ARE MADE OF.

NORA CUP

continued from page 67

BICYCLE MOTOCROSS ACTION MAGAZINE 1979 AWARDS

NO. 1 RACER / ★ NO. 1 TEAM

STATISTICAL TABULATION OF VOTING

TOP TEN RACERS AND NUMBER OF VOTES RECEIVED:

(Note: 4140 total votes were cast.)

1. Stu Thomsen (SE) 1040
2. Sal Zeuner (DG) 612
3. Harry Leary (JMC) 384
4. Scott Clark (Robinson) .. 349
5. Bobby Encinas (Shimano) 297
6. Greg Hill (Red Line) 175
7. David Clinton (Shimano) 160
8. Stanley Robinson (Mongoose) 147
9. Jeff Kosmala (Mongoose) 142
10. Greg Esser (MCS) 131

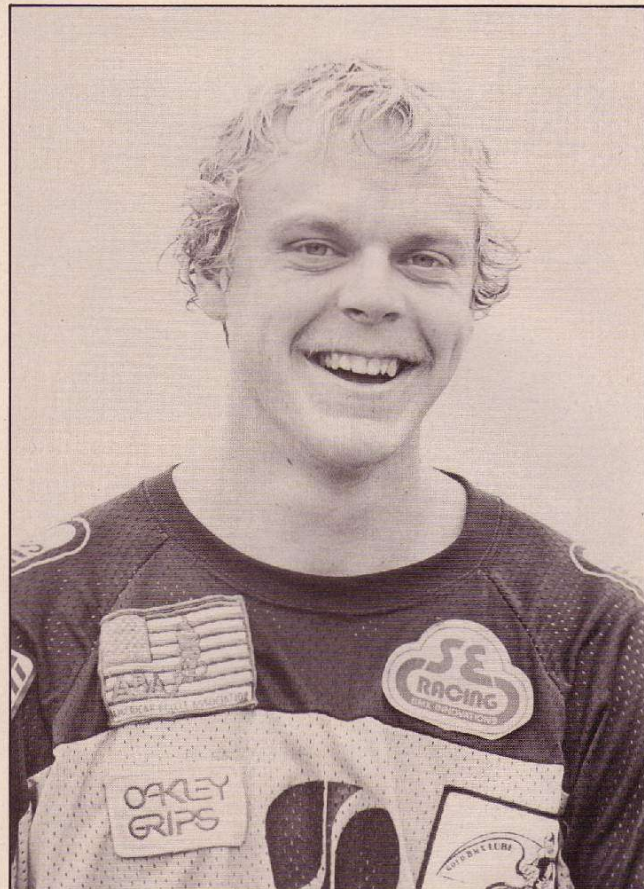
TOP TEN TEAMS AND NUMBER OF VOTES RECEIVED

1. Mongoose 951
2. Red Line 773
3. DG 619
4. SE 594
5. Robinson 233
6. Schwinn 210
7. Shimano 188
8. JMC 188
9. Torker 131
10. Jag 86

TOP TEN STATES IN VOTING AND NUMBER OF VOTES CAST

(Note: 48 of the 50 states responded.)

1. California 1163
2. New Jersey 618
3. Florida 200
4. Illinois 161
5. Indiana 159
6. Pennsylvania 152
7. Texas 129
8. Michigan 120
9. Colorado 113
10. Missouri 79



Stuart Thomsen: The BICYCLE MOTOCROSS ACTION No. 1 Racer of the year.

... which means all of you out there. And think about it, that really means something.

And secondly, because of the fame and fortune that accompanies the award. Like last year, after being elected the BICYCLE MOTOCROSS ACTION No. 1 Racer, Bobby Encinas went on to become probably the highest paid, most publicized racer in BMX. This money came from sponsorships, co-sponsorships, and endorsements. Encinas became the Bob Hannah of BMX.

By now everybody has peeked at the photos and results to find out who won No. 1 Racer and No. 1 Team, so let's get on with this presentation...

For No. 1 Racer, Stu Thomsen won!

spent figuring out what it all meant ... we are ready to present the Nora Cup to the newly elected BICYCLE MOTOCROSS ACTION Magazine No. 1 Racer for the year of 1979.

But first a brief commercial message from the fine people who sponsor the Nora Cup ... us!

It is a fact that in two short years the Nora Cup has become one of the most prestigious awards in BMX; and for two reasons...

First and foremost, because the winning racer is selected by his peers

NORA CUP

And in winning, capped the most successful career in the history of BMX. Nobody has done what he has done. Stu Thomsen is the Pro's Pro.

Stu is 21 years old and comes from Whittier, California. He is over 6 feet tall and weighs close to 200 pounds. Despite size, he has the coordination of a ballet dancer when he's on a BMX bike.

When Stu lines up, he knows he's going to win. And so does everybody else on the line. Combine this iron-clad psych with his dexterity and mas-



A very strong second place finisher, the Flying Dustmap, Sal Zeuner. Not a bad year for Sal: NBL National No. 2 and Nora Cup No. 2. (Always a bridesmaid, huh Sal?)

sive power and you have the combo that made him NBA National No. 1 for 1978 and 1979.

Stu's BMX racing career began in late 1973, shortly after the beginning of the sport itself. The major events he has won in that time are legion. Suffice it to say that when Stu signs up for a race, the only question is who will finish second.

Stu has been sponsored by (in order) the old Dirtmaster Team, the original and notorious Webco Factory Team, DG, and FMF. When FMF went down the tubes he found a home at SE Rac-



The Nora Cup that Stu will receive at the ABA/DG Grand Nationals stands about two feet high, is silver plated, cost us a small fortune, and has a check in it for \$500. The Mongoose Factory Team will receive an identical trophy for winning No. 1 Team. Congratulations, you guys.

ing, where he's been ever since. To see Stu racing without his SE battle gear would be like seeing Abe Lincoln without his beard and top hat.

Stu's current co-sponsors include Oakley, MXL, Shimano, BW, M&M, Energonics, Team Products, and Rad Pad.

In BMX racing, Stu Thomsen is the man. And now, Stu Thomsen is officially the BICYCLE MOTOCROSS ACTION No. 1 Racer for 1979. As such, at the ABA/DG Grand Nationals, he will be awarded the actual Nora Cup and a check for \$500.

The award for the BICYCLE MOTOCROSS ACTION No. 1 Team, as voted by our readers, will go to the gnarliest, raunchiest, rangiest, mangiest collection of individual characters in BMX... the Mongoose Factory Team; Bryan Curnel, Jeff Kosmala, Stanley Robinson, Dangerous Danny Oakley, Kenny Nachman, Tim Richardson, Tinker Juarez, and Mike Tisdale.

BMX Products, the sponsor of Team Mongoose, will be awarded an exact duplicate of the Nora Cup, except engraved to the BICYCLE MOTOCROSS ACTION No. 1 Team for 1979.

And that's it for another year. To the winners... congratulations. To the voters... thanks, people, for making this possible.

And to the sport of BMX, the catalyst to all this madness... ROCK ON! ★

Kashimax

Kashima Saddle Mfg. Co., Ltd.

AVAILABLE FROM:

B One Distributors
1149 South King Street
Honolulu, HI 96814
(808) 537-6088

John T. Bill Company
4116 San Fernando Road
Glendale, CA 91204
(213) 245-7156

Clayton Cycle Company
5165 Martin Luther King
St. Louis, MO 63113
(314) 367-1312

CYC Distributing
1617 Rosecrans Ave.
Gardena, CA 90249
(213) 538-2824

Cycle Industries Corp., Ltd.
2763 13th Avenue, SW
Seattle, WA 98154
(206) 623-2212

Cycles Peugeot USA, Inc.
18905 Laurel Park Road
Compton, CA 90220
(213) 774-5454

Hans Johnsen Co.
8901 Chancellor Row
Dallas, TX 75247
(214) 631-1560

Laguna Distributors
23302 Vista Grande
Laguna Hills, CA 92653
(714) 770-3131

Lawee, Inc.
899 Cowles
Long Beach, CA 90613
(213) 437-6478

Miami Bicycle & Supply
407 S W 71st Avenue
Miami, FL 33144
(305) 261-0361

Moore's Cycle & Supply
1537 W Main
Oklahoma City, OK 73106
(405) 236-3785

Shofer's World of Wheels
8380 Balt.-Washington Blvd.
Jessup, MD 20794
(301) 953-9443

Tiger Cycle Mfg., Inc.
132 Wilson Street
Redwood City, CA 94063
(415) 366-3848

Windsor Enterprises, Inc.
2702 S. Port Way, Unit A
National City, CA 92050
(714) 474-1569

Flash!—Top Factory Teams ride Kashimax. Team Shimano and SE Racing pros chose the Kashimax MX for national competition!

The Kashimax Motocross Saddle



It's built for speed and it's built to last like no other saddle, because top competition riders won't sit for anything less. They love the light

weight, just 470 grams including the clamp. They can't bust it, even with its factory-drilled ventilation, because the Kashimax MX is molded in genuine, 100% nylon 6. And a rugged, chromed steel subframe and patented safety seatclamp keep it securely in place, jump after jump. Top it off with four totally hot colors—red, blue, yellow and black—and the Kashimax MX looks as tough as it's built.

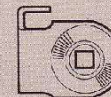
So race the seat that can't be beat. Kashimax MX.

Kashima Saddle Mfg. Co., Ltd.
No. 30-3, 3-Chome, Hannan-Cho,
Abeno-ku, Osaka, Japan

Seat base color—molded in pure nylon 6 for optimum strength.

Factory-drilled holes for light weight and ventilation.

Bottom edge beveled smooth, can't scrape legs or catch pants.



Safety seat post clamp (pat. pend.) securely locks seat angle and prevents post protrusion.



Breeze on Breezer . . . buns up. The 26 inch balloon tires on these bikes allow them to go just about anywhere.

LOADED FOR BEAR AND UNGODLY EXPENSIVE

FULL BORE CRUISERS



The Pro Cruiser: Chrome-moly frame, Tange forks, Shimano cranks, Mesinger seat, Ukal aluminum rims, stainless steel spokes, Carlisle Nobby tires, etc. 5 speeds. Cost is \$500.

into a highly sophisticated mega-buck machine equipped with parts made from every kind of exotic alloy known to man.

All of a sudden, the generic name—Klunker—kind of sticks in your throat. Especially when you're counting out anywhere from \$500 to \$1200 for one of them. ("Here's 1200 bucks, gimme that . . . oh . . . that red Klunker over there.")

If you want to study these bikes in their natural habitat, you have to travel to Northern California. Which is where we found Mert Lawwill, ex-Harley-Davidson flat track racer and one of the stars of the original "On Sunday" movie . . . smack dab in the middle of all this.

Mert is manufacturing a . . . uh, Klunker. It's called the Pro Cruiser. At the time of this writing he had produced and sold 75 bikes and was starting to build the next 100. The Pro Cruiser retails for under \$500 and employs some class equipment.

The only other people who are producing pure Klunkers are Joe Breeze and Tom Ritchey. Each has built around 10 bikes. The Breeze and the Ritchey sell for an incredible \$1200 . . . which gives you an idea of the quality of workmanship and components that is put into these bikes.

We asked Mert, Joe Breeze, Gary Fisher, Charles Kelly, and the owners of the Cove Bike Shop in Tiburon—the people at the very heart of this brand new pastime—what they thought these bikes should be called.

Of all the names that have at various times been applied to these bikes—Klunkers, Balloons, Bombers, Down-

This thing is so new that nobody's sure just yet what to call it.

The way it all started was when a few people in Northern California figured it would be neat to have balloon-tired bikes to ride on hiking trails and back roads. So they either bought new cruisers for around \$150 or rummaged around in peoples' junk piles until they came up with an old klunker for about \$5. Obviously, the \$5 klunker quickly became the hot tip . . . a couple new tires and they were ready to go.

Gradually these back roads bikes became known as "Klunkers" . . . which for some unknown reason later changed to "Klunkers."

So anyway, these people would ride their Klunkers up in the hills surrounding San Francisco, be-bopping up and down the trails and fire roads, happy as anything.

Then one day, as such things usually go, somebody suggested the possibility that they could blow the doors off somebody else getting to the bottom of the hill. And the race was on.

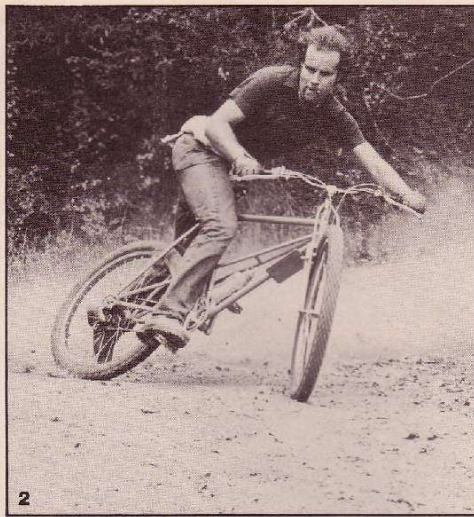
But it didn't end there. The following weekend the loser was back up in the hills with a "wanna try that again?" look on his face and a new 5-speed gear cluster on his Klunker.

Macho instincts being what they are, the lowly \$5 Klunker shortly evolved

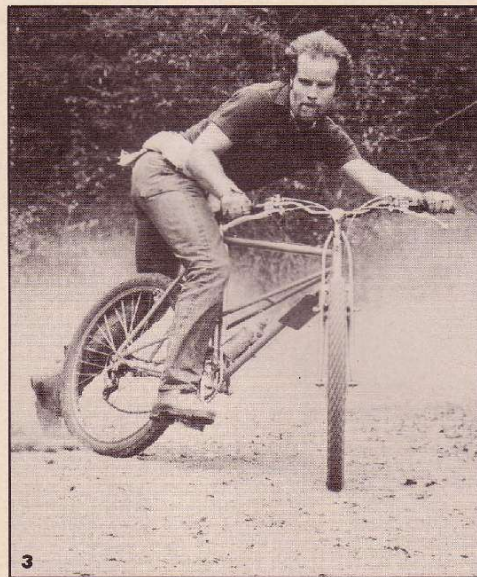
CRUISERS



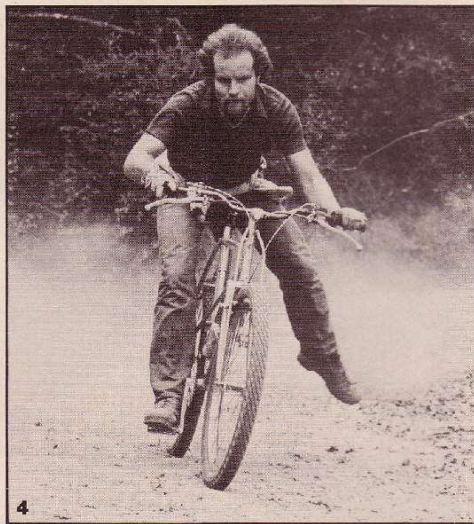
1 This guy is Joe Breeze.



2 He designed and builds this bike. It's called a Breezer.



3 In this motor-drive sequence Joe is demonstrating the classic toe-slide method of correcting excessive drift.



4 There are four things that are totally incredible about these photos: That Breeze managed to save it, that he didn't bite his tongue off, that the Breezer retails for a mind-boggling 1200 bucks, and that these Klunker guys do not wear helmets when they race. Dumb.

hillers, Mountain Bikes, Trail Bikes, Tankers, Cruisers, Cow Trainers—the consensus of opinion was that they should be called Mountain Bikes. And,

when you think about it, that name fits like a glove. We kind of favored Downhill Racers, but they're really more than that. They're uphill racers, downhill

racers, cross-country touring bikes, enduro bikes, fire road racers . . . you name it. What they are really, from our point of view, is the ultimate cruiser.



Why, Martha, it's ol' Mert Lawwill, ex-Harley-Davidson flat track racer and one of the stars of the original "On Any Sunday" movie. He manufactures the Pro Cruiser.



The Breezer: Chrome-moly hand made frame and forks, Phil Wood hubs and bottom bracket, motorcycle bars, Magura brake levers, KKT Lightning pedals, Campagnolo seat post and seat post clamp, Dia Compe cantilever brakes, and so on. 12 speeds. Cost is \$1200.

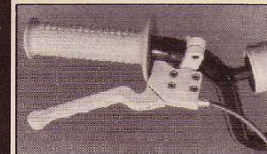


C.D.I.

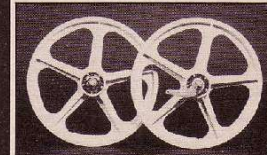
One of the largest distributors in the southwest.

We carry all the popular BMX equipment.

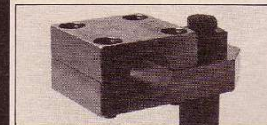
Dealers only call today
(214) 620-0124
48-HOUR SHIPMENT!



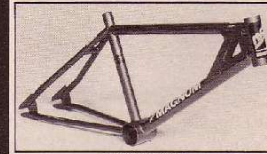
HARE-TRIGGER



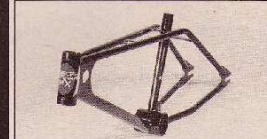
TUFF WHEEL II



TUF-NECK



MCS MAGNUM

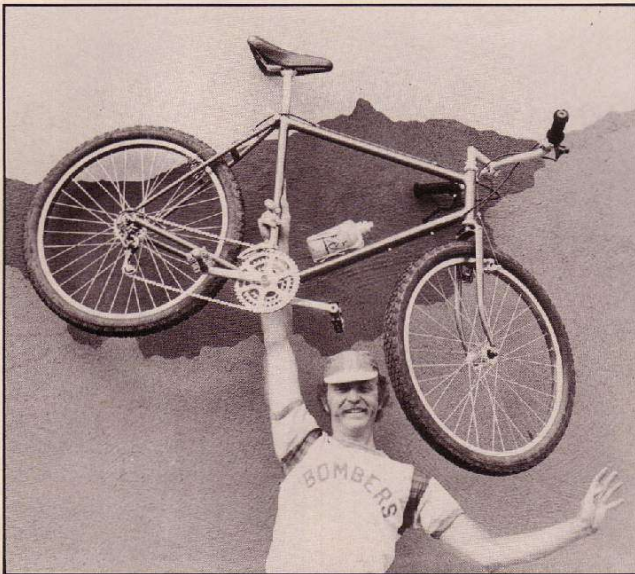


TORKER L.P. MILD STEEL AND CHROME-MOLY FRAME

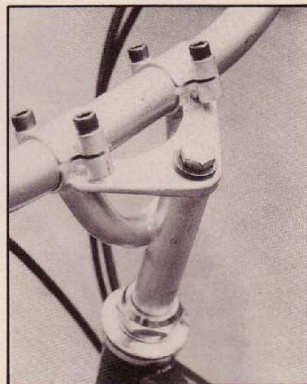
(See us at the BBS EXPO, booths 67 and 68, January 12-14.)

C.D.I.
3115 Garden Brook
Dallas, Texas 75234

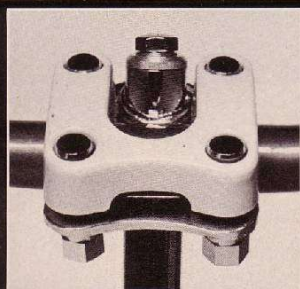
CRUISERS



The Ritchey: Chrome-moly and mang-moly frame and forks, TA cranks, Phil Wood hubs and bottom bracket, KKT pedals, Uniroyal tires, aluminum touring bars, Grab On grips, Campagnolo dropouts, and like that. 18 speeds. Cost is \$1200.



Superlight prototype stem from Lawwill-Knight, Ltd., the company that manufactures the Pro Cruiser.



CHEAP AND THRASHABLE
(CHROME-MOLY AND ALLOY)



KUSUKI SLANT STEM

Manufacturer:
KUSUKI MFG. CO.
c/o Sun Tour U.S.A., Inc.
60 Chapin Road
Pine Brook, NJ 07058



Quick shipments from U.S.A. warehouse! Distributors and dealers contact:

EVERYTHING BICYCLES

22122-B S. Vermont Avenue, Torrance, CA 90503 • (213) 328-4222

while **KING** of the **HILL**



appeals to some, or

BEAUTY



on the **BEACH** appeals to others...

whichever you prefer, get the most for your money! We, at Laguna, feel that we can't compromise on the quality we provide, and neither should you. If you want the absolute best in component parts... look to Laguna. The way we build them—on our BMX models, on any given day, you could be King of the Hill... and nobody questions the fact that Laguna Cruisers are eyecatchers wherever they are. Stop by your dealer and ask for Laguna, or call us... we'll refer you to the dealer nearest you.

LAGUNA
products

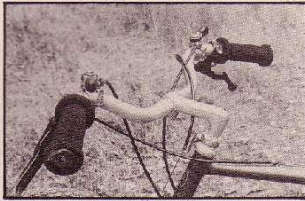
dealer inquiries invited... for more information write or call:
LAGUNA DISTRIBUTORS, INC. Call (714) 770-6299
23302 Vista Grande, Laguna Hills, California 92653

CRUISERS

This new breed of bicycle is an extremely sophisticated piece of machinery. Weight usually runs in the 30 to 35 pound



The Pro Cruiser runs Sturmev-Archer drum brakes front and rear.



Standard Mountain Bike handlebar rigging... motorcycle levers, thumb shifters for front and rear derailleurs.



This is the lightest seat/seat-post combo we've ever seen, except maybe the old Uni-Seat. It's an Avocet seat modified by Tom Ritchey. The undercarriage, clamp, and seat post are aluminum. Total weight: 19 ounces!

neighborhood which for a cruiser is feathery. They usually run 175 to 185mm aluminum pedal arms. Most have at least 5 speeds, some go up to an incredible 18 speeds. And all of the class Balloons

use a quick-release seat post clamp so the rider can lower the seat for better control and lower center-of-gravity on downhill runs, and raise the seat for a better power position on hill climbs.

The big 26 inch balloon tires make it possible to ride over rocks, tree roots, small ditches, and most other things found on hiking trails and back country roads. On the average hiking trail a Mountain Bike rider can cover about 4 times the distance of a walker, with less effort. The environmental impact is about equal to a backpacker.

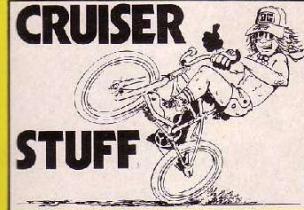
At speed, those big tires create a kind of gyroscopic stability not found in 10-speed or BMX bikes.

In Northern California there is a downhill course that some of the hard core Klunker people race on. The place is called "Repack." It's a twisting, turning, gnarly, downhill two mile stretch of fire road.

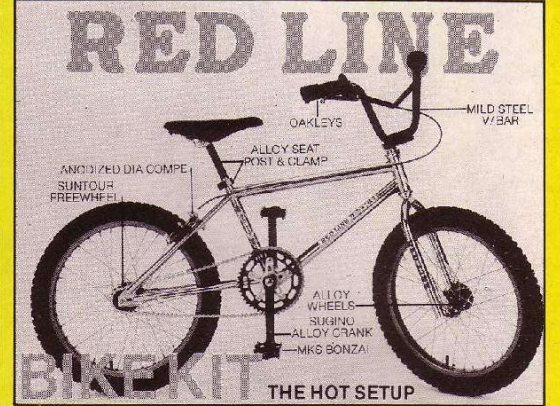
Actually Repack is not so much a race as a time trial. One guy at a time goes off against a clock. The record is 4 minutes 22 seconds which works out to be an average of about 25 MPH. And that ain't exactly just puttin' along.

Going full blast down this course with a standard coaster brake will result in

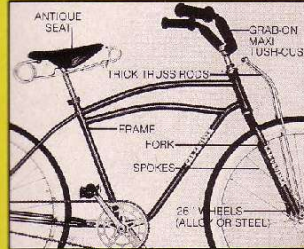
BMX AND BEACH CRUISER HEADQUARTERS



ELECTRO TINT COLORED SPOKES. RED, BLUE, GOLD, BLACK, WHITE.



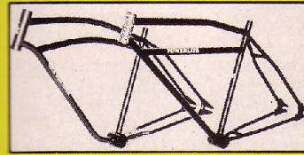
BIKEKIT THE HOT SETUP. FRAME & FORK IN SLUE, RED, YELLOW, BLACK, WHITE AND TEAM CHROME WITH COLOR COORDINATED COMPONENTS.



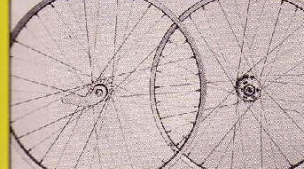
DESIGN YOUR OWN 26" CRUISER.



POWERLITE AND CAL CRUISER 26 FORKS.



26" FRAMES, NEW COLORS: IVORY, WHITE, YELLOW, BLUE, RED, BLACK. POWERLITE IS CHROME-MOLY. CAL CRUISER IS MILD STEEL.



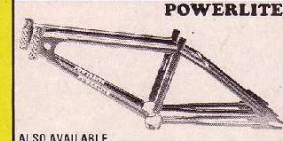
26" ALLOY COLORED WHEELS (RED, BLUE, GOLD), WITH COLOR COORDINATED SPOKES. 10-5/8" COLORED SPOKES AVAILABLE SEPARATELY (RED, BLUE, SILVER, BLACK, WHITE, GOLD).



NEW-TO-CRUISER SEAT.



TWO-FINGER ALLOY LEVERS WITH SLEEVES.



ALSO AVAILABLE WITH THREADED 10 SPEED BOTTOM BRACKET. CHROME-MOLY OR MILD STEEL, REGULAR OR LONG SIZE.



THEY DON'T RUST, BUST OR COLLECT DUST.



NEW! MX-1000 "NO-FLEX" RIGID ANCHOR QUICK RELEASE AND EZ ADJUSTER. RED, BLUE & GOLD.



MCS 26" STEM.



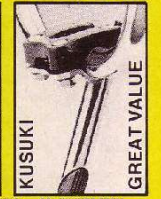
COMP II SKIN WALLS. YELLOW, BLUE, RED, BLACK. 20 x 1.75. 2.125.



LIGHT AND TIGHT.



SUGINO SUPER MAXY CRANKS AND SPROCKETS. TWO LENGTHS: 170 AND 180 mm.



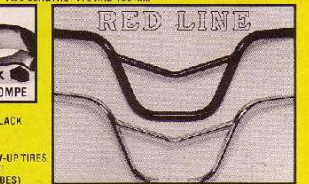
KUSUKI GREAT VALUE. CAL WINNER STEM.



REMARKABLE - RACING WHEELS & SEW-UP TIRES ONLY \$19.70 FOR THE COMPLETE SET (BOTH WHEELS INCLUDING 2 TIRES/TUBES).



ALLOY SEAT CLAMPS. ANODIZED RED, BLUE, GOLD, SILVER, BLACK.



RED LINE 5 DEPENDANT CHROME-MOLY (CHROME, RED, BLUE).

Dealers and distributors phone Craig, Ron, or Tim NOW!

(213) 328-4222

EVERYTHING BICYCLES. 15000 STAFF COURT GARDENA, CA 90248.



BMX TOUGH! THE HKK CHAIN GANG



BLACK/GOLD SMOKER CHAIN. NICKLE PLATED CHAIN. Available in both sizes • 1/2" x 1/8" and 1/2" x 3/32"

BMX CHAINS... ANYWAY YOU LIKE 'EM

At leading bike shops throughout the world...

For further information contact: HKK CHAIN CORPORATION OF AMERICA

45 U.S. Highway-46 • Pine Brook, New Jersey 07058



Mesinger's latest...
Compares **NEW LIGHTER R3S (Steel)** with plastic competitor

We weighed both seats under the same conditions and the results were— Plastic Competitor seat with top and pad weighed approximately 20 ounces.

The Mesinger R3S seat with top and pad weighed approximately 20 ounces *plus*

THE STRENGTH AND SAFETY OF STEEL.

Check it out, test ride one today.



MESINGER MANUFACTURING

Bethel, Connecticut 06801 (203) 743-8714

CRUISERS

fried bearings every time. Which means a repack with fresh grease before the next assault. Hence the name "Re-pack."

From our point of view, the racing potential of Mountain Bikes is the most exciting facet of their future. They can be raced on a motocross course, which



Mert Lawwill; still hookin' it on, even without his Harley. But no helmet. Tsk, tsk, tsk, Mert.

FULL BORE CRUISERS WHO TO CONTACT:

PRO CRUISER
Lawwill-Knight, Ltd.
25153 O'Neil Ave.
Hayward, CA 94544
(415) 582-1388

BREEZER
Breeze Industries
28 Country Club Dr.
Mill Valley, CA 94941
(415) 388-1217

RITCHEY
Mountain Bikes
P.O. Box 405
Fairfax, CA 94930
(415) 456-1898

is gradually becoming popular with cruisers. Or less formally, it would be a total kick to get a few fathers and sons together; fathers with their 26 inchers, sons with MX'ers, haul people and bikes to the top of some local fire road, and then blast down. It would sure clear the cobwebs out after a dull week at school or work.

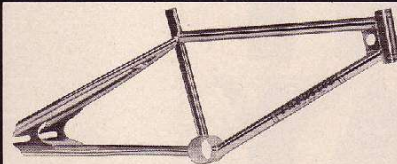
The only thing is . . . look out, fathers, your kids will dust you.

At least at first. *

BICYCLE MOTOCROSS ACTION

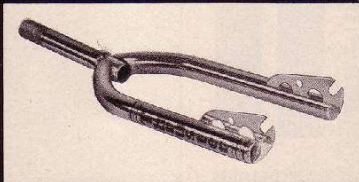
Thruster... FASTEST GUN IN THE EAST!

Thruster's **Timmy Judge Replica Frame** is 100% chrome-moly (4130) and lightweight.



Timmy Judge Replica

It's super strength and superb handling make it the winner's choice. New design rear axle dropouts put all the thrust you put on the pedal to the rear wheel...no flex! Also available with English bottom bracket, in red, white, chrome and blue.



Thruster Forks are 100% chrome-moly (4130) and lightweight. The geometry eliminates "wash-out". They handle like a true racer.

Available in chrome, red, white and blue

Thruster logo T-shirts available for \$6.00 in Boys, M.L. Mens, S,M,L,XL. Send 50¢ for our brochure and sticker. **Thruster logo Caps** in blue and white available for \$7.00. One size fits all.

FACTORY TEAM EQUIPPED BY:



ISE HELMETS



GRIFFS

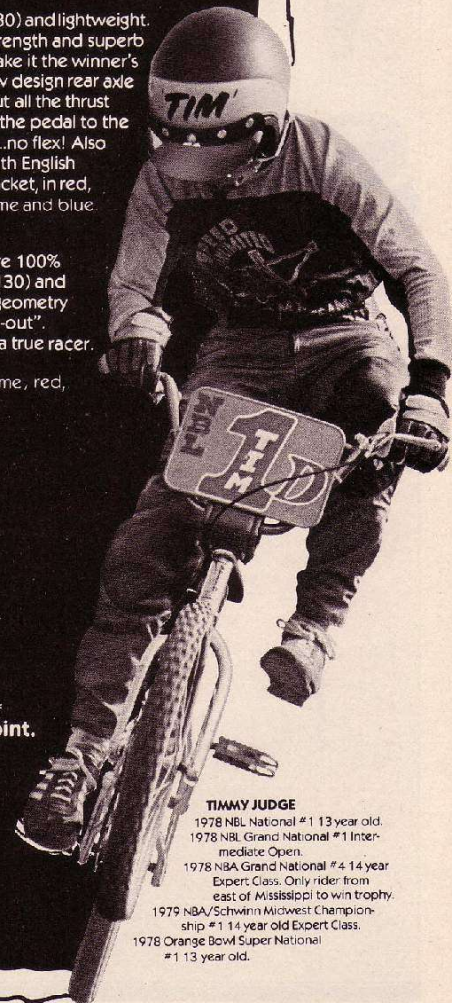


Dealers and Distributors Contact:

SPEED UNLIMITED, INC.
45 Jerome Place
Wayne, New Jersey 07470
(201) 696-5768

CHICAGO AREA.
(312) 895-3307

Quality **THRUSTER** products from the makers of the world's fastest funny car, **Vanishing Point.**



TIMMY JUDGE

1978 NBL National #1 13 year old.
1978 NBL Grand National #1 Intermediate Open.
1978 NBA Grand National #4 14 year Expert Class. Only rider from east of Mississippi to win trophy.
1979 NBA/Schwinn Midwest Championship #1 14 year old Expert Class.
1978 Orange Bowl Super National #1 13 year old.

Changing your address?

Keep your subscription coming. Notify us at least six weeks in advance.

Mail to:



P.O. Box 5277
Torrance, CA 90510

Paste mailing label (with old address) here.

Write in **NEW** address below:

NAME _____
ADDRESS _____
CITY _____
STATE _____ ZIP _____

SPENCER'S WORLDWIDE BMX MAIL ORDER SERVICE



48-hour shipment anywhere in the United States

For sticker and complete BMX catalog send coupon and \$1.00 (applied toward first purchase) to:

SPENCER'S BMX
P.O. Box 2189
Yorba Linda, CA 92686

PHONE US YOUR ORDERS (714) 970-7052 BMXperts



Two huge warehouses full of all the trick BMX equipment!

NAME _____
ADDRESS _____
CITY _____
STATE _____ ZIP _____

COMING SOON...

ON ANY SUNDAY

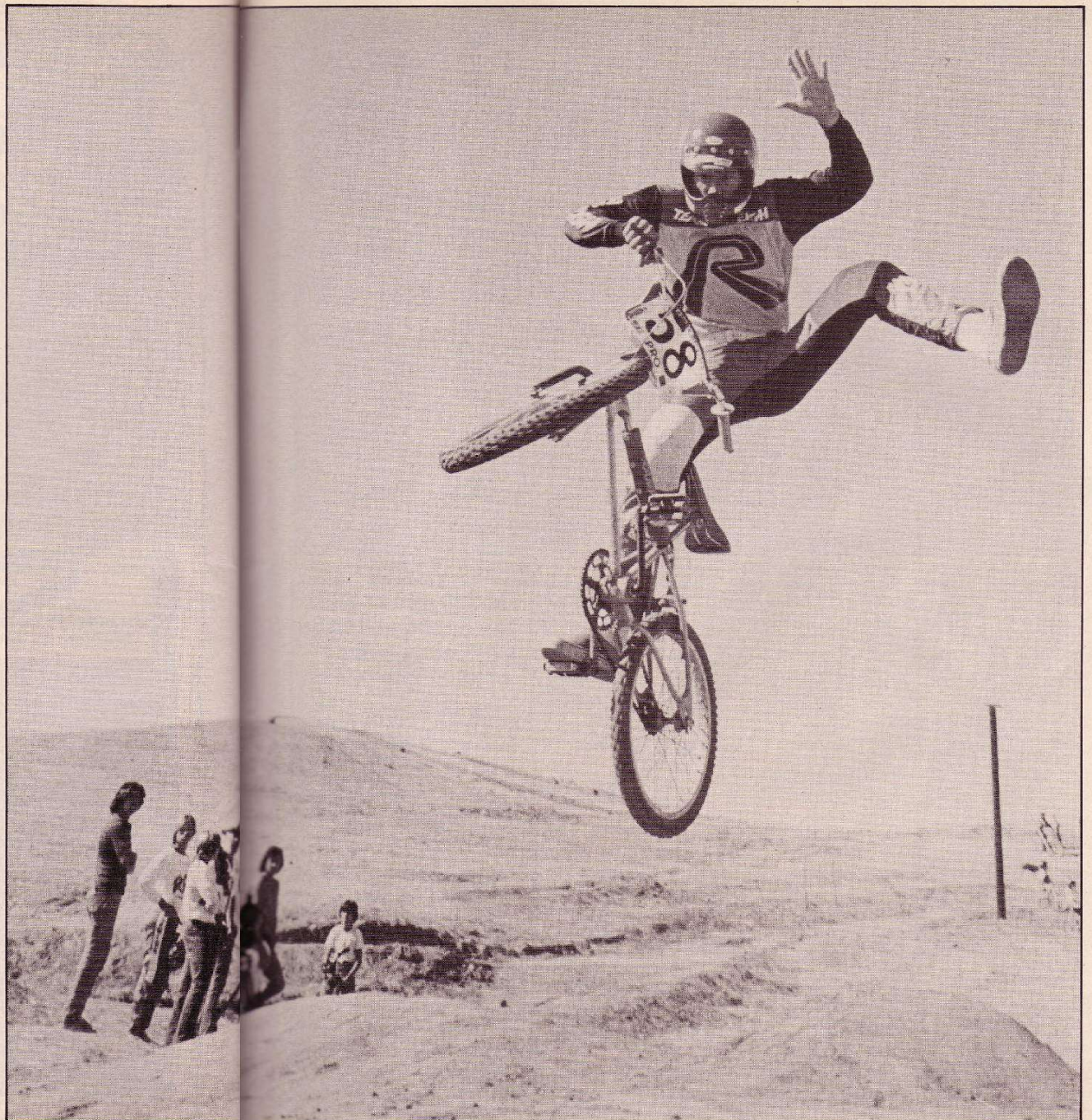
FEATURING
KENNY ROBERTS,
BRAD LACKEY,
BOB HANNAH,
AND BMX

BY BOB OSBORN

Even though it was eight years ago, I remember it like it was yesterday. My kid and I were up toward the front, slid down in our seats, with our feet propped up in front of us. We were provisioned as for an assault on Everest; two large popcorns, two DP's, some butter-toffee peanuts, and just in case that didn't see us through, some smuggled-in Twinkies. Just when we polished off the last of the Twinkies and were about to head for the snack bar to stock up again, the lights dimmed and the screen lit up with a picture of a vacant lot. We could hear this kind of a "rreeennng, rreeennng,

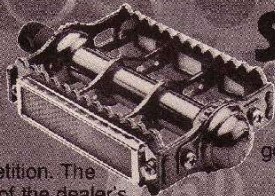
continued on page 88

During some BMX filming at Corona, a bunch of the Pro's got into a jumping contest. Here, the Coca Cola Cowboy cuts loose.

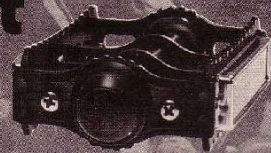


When the competition's tough,
rely on the pedals that get there first.

**KKT
surefoot**



Available
in black, red, blue,
gold and chrome plated.



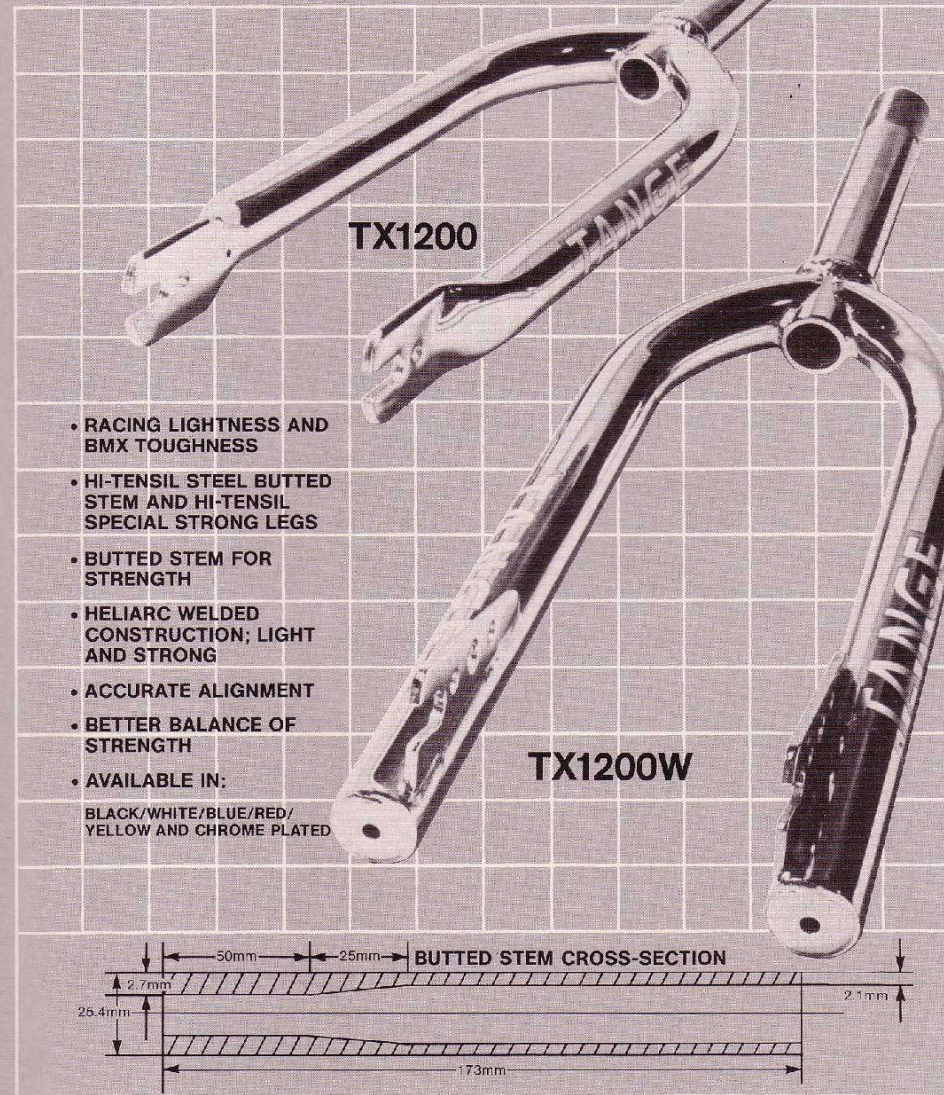
Competition. The name of the dealer's game. No room to slip in judgment. It's quality BMX pedals that racers want and KKT delivers SUREFOOT with chrome-moly spindles built to survive the punishment only kids can deal out. Order long or short models, each with notched end plates and concave grip surfaces designed to keep feet from slipping on crucial turns. Arm yourself with the only choice in pedals. SUREFOOT. And win the dealer's race.

Distributed by
CYCLES PEUGEOT U.S.A. INC.
Eastern Division: 495 Boulevard
Elmwood Park, NJ 07407
Tel. (201) 797-6660
Western Division:
P.O. Box 6050
Compton, CA 90220
Tel. (213) 537-3600

KKT surefoot

Because there's no room for error in BMX.

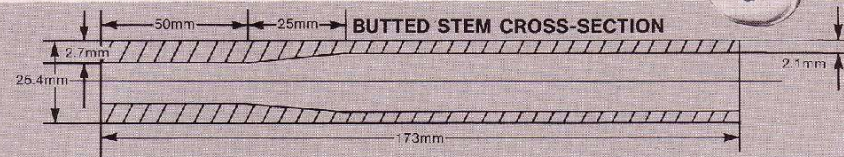
TANGE FORKS



TX1200

TX1200W

- RACING LIGHTNESS AND BMX TOUGHNESS
- HI-TENSIL STEEL BUTTED STEM AND HI-TENSIL SPECIAL STRONG LEGS
- BUTTED STEM FOR STRENGTH
- HELIARC WELDED CONSTRUCTION; LIGHT AND STRONG
- ACCURATE ALIGNMENT
- BETTER BALANCE OF STRENGTH
- AVAILABLE IN:
BLACK/WHITE/BLUE/RED/
YELLOW AND CHROME PLATED



Order your logo stickers, patches and hats here!

HATS

<input type="checkbox"/> ADDICKS 5.99	<input type="checkbox"/> BMXA, large 40
<input type="checkbox"/> ELECTRO 5.96	<input type="checkbox"/> BMXA, small 30
<input type="checkbox"/> GRAB-ON 5.96	<input type="checkbox"/> CYC, rub-on 45
<input type="checkbox"/> JT 5.98	<input type="checkbox"/> CYC, clear 35
<input type="checkbox"/> OAKLEY 5.96	<input type="checkbox"/> ELECTRO, rub-on 50
<input type="checkbox"/> SE 5.96	<input type="checkbox"/> ELECTRO, tear drop 40
<input type="checkbox"/> TORKER 5.98	<input type="checkbox"/> GRAB-ON 40
		<input type="checkbox"/> JMC, large 45
		<input type="checkbox"/> JMC, small 35
		<input type="checkbox"/> JT, large rub-on 50
		<input type="checkbox"/> JT, small rub-on 45
		<input type="checkbox"/> JT, large 3D 45
		<input type="checkbox"/> JT, small 3D 35
		<input type="checkbox"/> JT, lightning bolts 1.00
		(pt and left) 1.00

TO ORDER:

- Indicate in the boxes how many of each item you want.
- Add up order and fill out order blank.
- Cut out this ad and send with check or money-order in the total amount to:

HOT STICKIES CO.
P.O. Box 3401
Redondo Beach, CA 90277

ORDER BLANK

Total amount of purchase	
California residents add 6% sales tax	
For postage and handling add 50c	
Total enclosed	
Your name	
Address	
City	
State	Zip

STICKER PATCHES

<input type="checkbox"/> JT 1.75	<input type="checkbox"/> MXL 1.75
<input type="checkbox"/> MXL 1.75	<input type="checkbox"/> SE 1.75
<input type="checkbox"/> SE 1.75	<input type="checkbox"/> PANDA, large 45
<input type="checkbox"/> OAKLEY 1.60	<input type="checkbox"/> PANDA, name 45
<input type="checkbox"/> TORKER 1.60	<input type="checkbox"/> ROBINSON, rub-on 50
<input type="checkbox"/> TORKER 1.50	<input type="checkbox"/> ROBINSON, square 50
		<input type="checkbox"/> ROBINSON, rectangle 40
		<input type="checkbox"/> SE, large 40
		<input type="checkbox"/> SE, small 30
		<input type="checkbox"/> TORKER, round 50
		<input type="checkbox"/> TORKER, large 50
		<input type="checkbox"/> BILL WALTERS 40

DEALER INQUIRIES INVITED

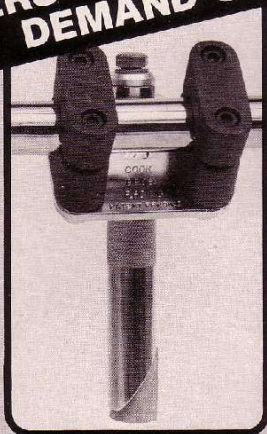


TANGE INDUSTRIES, LTD.

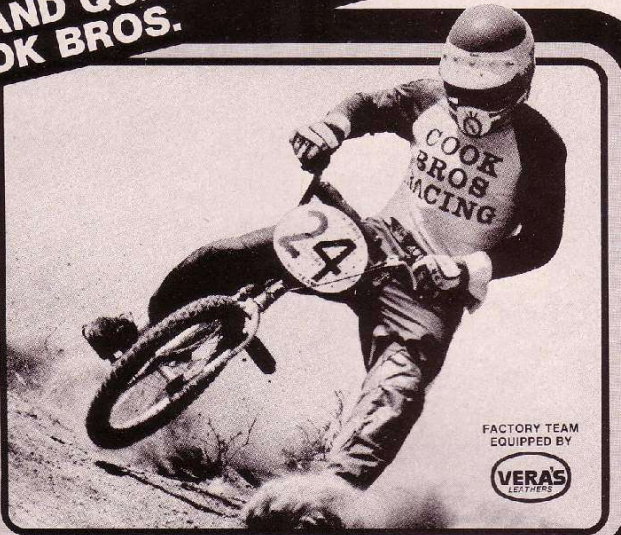
6-635 COTORI HIGASHI, MACII
SAKAI, OSAKA 530, JAPAN

SHIMANO SALES CORPORATION
9259 San Fernando Road, Sun Valley,
California 91352 (213) 767-7777

**RACERS WHO DEMAND QUALITY...
DEMAND COOK BROS.**



SLANTLINE STEM



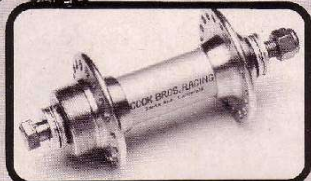
FACTORY TEAM
EQUIPPED BY



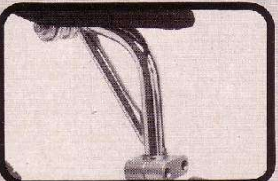
WE'RE PROUD TO BE NO.1 WITH QUALITY MX COMPONENTS!

COOK BROS. RACING

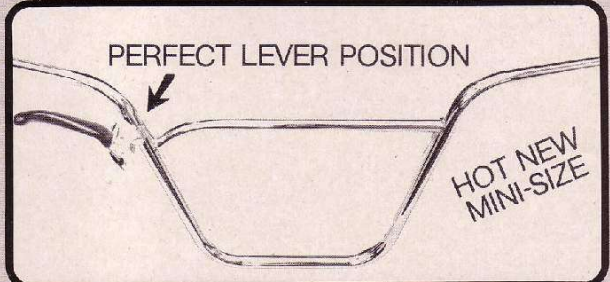
1609-B E. Edinger Ave., Santa Ana • Calif. • 92705 • 714/835-2700



NEW! "FLIP-FLOP" REAR HUB



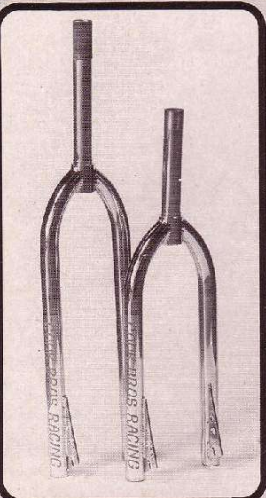
"LAID BACK" SEAT POST



PERFECT LEVER POSITION

HOT NEW
MINI-SIZE

SLANT-BAR—MOUNT YOUR BRAKE LEVER IN PROPER POSITION



26" BEACH CRUISER FORK

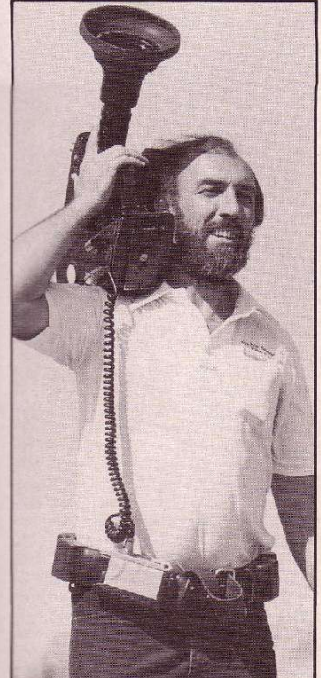
SEND FOR: Sticker pack—\$1.00
79 Catalog—\$1.00

NEW! TWO FOOT BANNER STICKER—\$4.00

SUNDAY II

continued from page 85
"reeennng" noise that didn't make any sense at all.

Then, as the camera moved, we saw a line of about eight or ten kids on Stingray bikes with pie plates taped to their bars. All these kids were hunched over their bars, twisting their right grip madly,



If you saw the original "On Any Sunday," this will impress you: Don Shoemaker filmed it. And he's filming "Sunday II."

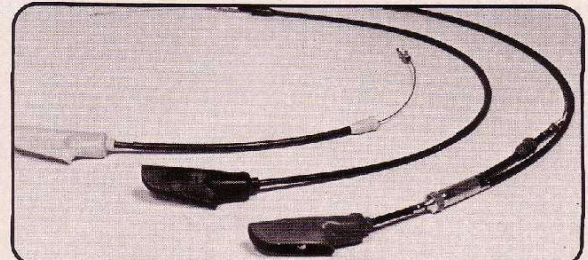


Hey, if you're gonna be a star, you've gotta put up with stuff like this. Who are those guys, Burt Reynolds and Robert Redford? Greg who? Toby who?

JANUARY 1980



TERRYCABLE
P.O. Box 1321
Hesperia
California 92345
(714) 247-2646



TERRYCABLES are used by most factory sponsored motorcycle riders. NOW YOU CAN GET THE FAMOUS TERRYCABLE SPECIALLY DESIGNED FOR YOUR MOTOCROSS BICYCLE.

- Super smooth lined cable requires less strength to activate braking.
- Quicker stopping, more control.
- Strong housing resists stretch, no mushy feel to the brake.
- More precise, smoother action.
- Rubber covers for levers keep dirt out for better action.

WITH THE SUPER SMOOTH TERRYCABLE YOU WILL GET THE MOST OUT OF YOUR HIGH PERFORMANCE BRAKE PADS AND RIMS. ENERGY IS NOT LOST IN ACTIVATING THE CABLE.

- Individually packaged including stickers.
- Rubber covers come in 3 colors: yellow, red, black.
- Three styles available: 1) front brake 2) rear brake 3) special dual activating brake from one lever.

WRITE OR CALL FOR FREE LITERATURE

Dealer inquiries invited.

BAUER

CYCLE SUPPLY INC.

MIDWEST'S LARGEST
MOTOCROSS
DISTRIBUTOR



404 THIRD AVENUE NORTH
MINNEAPOLIS, MN 55401
OUT OF STATE CALL
(800) 328-8320
MINNESOTA CALL
(612) 333-2581

DEALERS ONLY PLEASE



MOLINAS

CYCLE CENTER

7931-B Thornton Road
Stockton, CA 95210
(209) 951-6116

Are you having trouble getting the "PRO PARTS" you want?

TELEPHONE OR MAIL ORDER
We ship right to your door



Send 50¢ for your PRO CATALOG
LINE of BMX bicycles and parts.

NEW BMXA WERKS HAT

- ★ TOTALLY VENTED
- ★ PADDED BILL
- ★ BLUE AND GOLD TEAM COLORS
- ★ ONE SIZE FITS ALL
- ★ \$6.50 EACH



Check at your local bike shop for your BMXA Werks Hat, or order from:

NAME _____
 ADDRESS _____
 CITY _____ STATE _____ ZIP _____

QUANTITY	ITEM(S) WANTED	PRICE	TOTAL
	BMXA WERKS HAT(S)	\$6.50 EA	

U.S. Sales Co.

P.O. Box 3599
 Redondo Beach, CA 90277
 (213) 533-6048

PLEASE ALLOW 2 TO 4 WEEKS FOR DELIVERY

FOREIGN ORDERS ADD \$2.50

CALIF. RESIDENTS ADD 8% SALES TAX

ADD \$1.50 FOR POSTAGE AND HANDLING

TOTAL ENCLOSED

SUNDAY II



C'mere, mamma. I want you to be my backrest while I do some important shooting.

your Fruit-of-the Looms, young heros, 'cause here we go again.

About a year ago, the rights to film a sequel to "Sunday" were bought from the owners, Bruce Brown and Steve McQueen, for a reported \$125,000 (gaspl) by a group of Orange County, California investors who had a lot of bucks and were into motorcycle racing. The only way that Brown and McQueen would agree to sell was if Don Shoemaker, who filmed the original "Sunday," would do it again.

Right now, Shoemaker and crew are up to their eyeballs in the filming of "On Any Sunday II."

This time around "Sunday II" is going to feature Kenny Roberts going for the World Road Racing title, Bad Brad Lackey chasing the World Motocross Championship, Bob Hannah blitzing the Stadium Motocross Series, and BMX.

Yes, flick freaks, your old fave, BMX is going to dominate the silver screen for about five minutes during "Sunday II." And if the impact of this one is anything like the impact of the first one, then you ain't seen nuthin' yet! Things are going to get REALLY hectic!

A bunch of BMX filming was done at Saddleback and Corona. While at Corona, Stu, Henderson, Bottema, PK, and a bunch of the Pro's got into the wildest jumping contest I've seen since the days of Palfryman and Lund at Sylmar. It was crazy. And the "Sunday II" crew recorded it all.

"On Any Sunday II" is lined up for release around April or May of this year. Me and the kid can't wait. ★

and making the weird noise we were hearing. It still didn't make much sense.

Then, some other kid jumped in the air, waved a T-shirt back and forth, and hollered, "GO!"

Now we understood. These kids were pretending that they were racing motorcycles.

But it was wild: As they came off the line, the picture switched to slow motion and some "Bonnie and Clyde" get-away type of music started.

In slow motion these guys came wheeling off the line—one of them stuck his foot between his forks and front wheel and did an endo—going through turns and over jumps, just like on motorcycles.

While all this was going on, the credits for the movie were overprinted on the screen. The title was "On Any Sunday."

The rest of the movie was about motorcycles. Without going into a long thing about how good it was, suffice it to say that R.L. and I went back to see it again eleven times.

The whole bicycle sequence lasted only three minutes. But within that three minutes, time bombs that would one day explode into the sport of bicycle motocross racing were planted in the minds of unguessable numbers of kids and fathers across the nation.

Three minutes. And look what came of it.

Yeah, "Sunday" was far out. But hold

CUSTOM BICYCLE MOTOCROSS

THE ULTIMATE SPECIALTY MOTOCROSS BICYCLE ASSEMBLY STORES IN THE NORTHWEST COMPLETE LINES OF ALL MX COMPONENTS. MAIL ORDER SERVICE. RACE INFORMATION. THE PLACE TO SHOP FOR YOUR MOTOCROSS NEEDS!

BIKEFACTORY

Lynnwood Shop Ctr. 2241-140th N.E.
 Lynnwood, Wa. 98035
 (206) 778-4448

Bellevue 98005
 (206) 641-5434

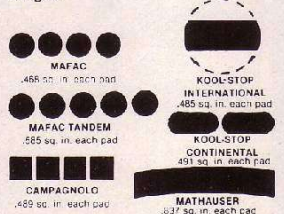
WOODEN WHEELS BICYCLE SHOP

(302) 368-BIKE
 274 E. Main St., Newark, Delaware 19711
 (5 minutes from I-95 on Route 273)

BMX IS OUR ONLY BUSINESS
 Send a self-addressed stamped envelope for FREE catalog.

(No sales tax to out-of-state residents)
 (We will be closed the second two weeks of January.)

TWICE AS BIG = TWICE AS GOOD when buying premium-priced brake shoes. The braking **SURFACE** is what stops your bike. The larger the surface the better you can stop, especially in rain. And the larger surface resists heat and fading better, and lasts **MUCH** longer.



Insist on getting all you're paying for. With nearly double the braking area, Mathausers give you far more stopping power and durability for your money.

THE ORIGINAL, AND STILL THE BEST HIGH PERFORMANCE BRAKE SHOE

Scott/Mathausers Corp.
 Box 1333 Sun Valley, Id. 83353



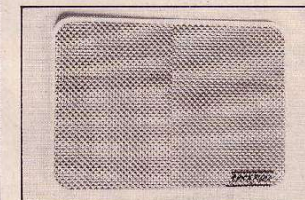
trick stickers by sportSupply
 PRESSURE SENSITIVE VINYL DIFFRACTION STICKERS
 • EZ Order/Inventory System
 • Free Dealer Display Board

DEALER INQUIRIES INVITED

sportSupply • 1921 W. Mildred
 Tacoma, WA 98466 • (206) 564-1920

HERE'S TRICK by sportSupply

MANUFACTURER AND DISTRIBUTOR



TRICK DIFFRACTION NUMBER PLATE



HARE BMX PRODUCTS:
 • Hare-Trigger
 • Visor • Pedal
 • Goggle • Face Mask

SUPERBYKE PRODUCTS:
 • Tut-Neck
 • Fork • Seat Post
 • Handlebar • Pad

SHAKESPEARE'S BMX

Mail Order Specialists
 Best For Less

Send for FREE catalog
 P.O. Box 503
 Ocean City, Md. 21842
 (301) 289-4948

Red Line
 Cook Bros.
 Tut-Neck \$19.95



BICYCLE MOTOCROSS ACTION BINDERS



Save and protect your treasured copies of the Most Famous Magazine in this permanent volume. These durable binders are custom silk screened with a blue BICYCLE MOTOCROSS ACTION logo on the cover and the spine. Naturally the binder is yellow, our other favorite color. Time to clean up that stack of loose magazines in your bedroom or out on the coffee table. Each binder securely holds 12 copies, neatly organized at your fingertips for ready reference. (These binders will make an attractive addition to your library. (You do have a library, don't you? Order several for your collection.)

Only \$5.95 each • (Price includes shipping and handling)

U.S. Sales Co.

P.O. Box 3599
 Redondo Beach, CA 90277

Please send me _____ BICYCLE MOTOCROSS ACTION binders at \$5.95 each, postpaid. California residents add 6% sales tax. Total enclosed: _____
 All orders shipped via U.P.S.

Name _____
 Address _____
 City _____
 State _____ Zip _____

Please allow 4 weeks maximum for delivery

BARON'S BIKE AND SPORT SHOP



CUSTOM BMX RACERS MADE TO ORDER AT UNBELIEVABLE PRICES.

FEATURING MONGOOSE & REDLINE PRODUCTS

4011 W. 182 St.
 Torrance, CA 90504
 (213) 532-5194

TRICK STUFF

FROM panda bmx bikes

DISTRIBUTOR/MANUFACTURER

DIA COMPE



X-CALIBER



SUN TOUR



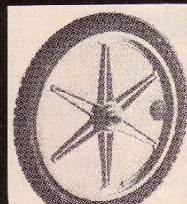
ALLOY SEAT POST CLAMP



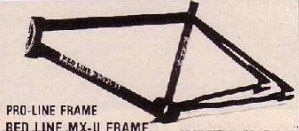
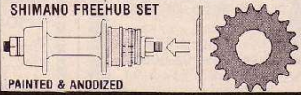
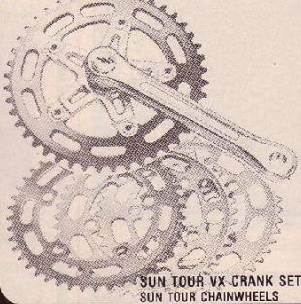
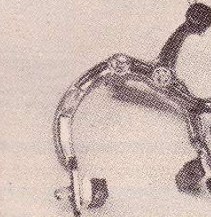
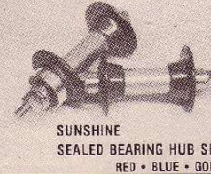
TANGE MX-2 HEADSET



TUFF WHEEL I & II



ACS STOKER MAGS ZYTEL & ALLOY



And much . . . much more FROM

PANDA BIKE COMPANY
1450 FRANQUETTE AVE.
CONCORD, CA 94520
(415) 798-3950

INDEX OF ADVERTISERS

ABA	10
ACS	19
ALAN F. COHAN CO.	70
BARON'S BIKE SHOP	91
BAUER CYCLE SUPPLY INC.	89
BEAVER'S BIKE SHOP	26
BIKEECOLOGY	53
BIKEFACTORY	90
BILL WALTERS LEATHERS	22
BMX PRODUCTS	8, 9
BYRON'S	33
CDI	77
COOK BROS.	89
CYC DISTRIBUTING	28, 29, 60, 61
DAX STAND	24
DG PERFORMANCE	26
DURHAM BICYCLES	39
EVERYTHING BICYCLES	81
GJS	23
GT BMX	18
HARE BMX PRODUCTS	27
HARO DESIGNS	14
HKK CHAIN CORP.	80
HOT STICKIES CO.	86
HUTCH BMX RACING	93
INTERNATIONAL SPORT EQUIPMENT	47
JM CYCLERY	33
JOHAR MANUFACTURING	16
JT RACING	20, 21
KAR-CITY	18
KASHIMAWA	73, 73
KKT PEDAL	17, 86
KOOL STOP	54
KUSUKI	78
KUWAHARA	7
LAGUNA DISTRIBUTORS	79
MESINGER MANUFACTURING	82
MOLINA'S	89
NAGAOKA	6
NEOTECH INTERNATIONAL CORP.	50
OAKLEY	12
PANDA BIKE CO.	25, 92
PEDALER'S EAST	23
PRO-TEC, INC.	38
RACER'S EDGE	12
RED LINE ENGINEERING	34
ROBINSON RACING PRODUCTS	14
SCHWINN BICYCLE CO.	96
SCOTT/MATHAUSER	90
SE RACING	51
SHAKESPEARE	91
SHIMANO	5
SKYWAY RECREATION PRODUCTS	95
SPEED UNLIMITED	83
SPENCER'S BMX	82
SPORTSUPPLY	91
STICK-EM-UP	14
SUN TOUR	13
TANGE	87
TANGE SEIKI	24
TARTAN BICYCLE SALES	23
TEAM CHICAGO	93
TERRY CABLE	89
TORKER, INC.	11
TROXEL MANUFACTURING CO.	2
TUFF NECK, INC.	40, 41
U.S. SALES CO.	88, 89, 90, 91
VERA'S LEATHERS	55
WEBCO	15
WEST COAST CYCLE	64
WOODEN WHEELS	90

BICYCLE MOTOCROSS ACTION IS EQUIPMENT

"... to promote the strong, healthy, safe growth of BMX."

BICYCLE MOTOCROSS ACTION

MFM MOST FACTORY MAGAZINE

STATEMENT OF OVERSEAS MANUFACTURING INCUBATION CO.
Monthly Publication

ISSUES PUBLISHED	12	1977	12	1978
ISSUES FORWARDED	12	1977	12	1978
ISSUES RETURNED	0	1977	0	1978
ISSUES NOT RETURNED	12	1977	12	1978

STATEMENT OF OVERSEAS MANUFACTURING INCUBATION CO.
Monthly Publication

ISSUES PUBLISHED	12	1977	12	1978
ISSUES FORWARDED	12	1977	12	1978
ISSUES RETURNED	0	1977	0	1978
ISSUES NOT RETURNED	12	1977	12	1978

Hutch BMX Racing

The East Coast Mail Order King

Immediate delivery by UPS daily on the latest stock parts and bikes from all the big name brands.

Call or write today for our FREE price list. For a FREE decal, send a stamped, self-addressed envelope.

Hutch BMX Racing
731 Swan Cove Lane
Pasadena, Md. 21122 • 301-255-8586

Team Chicago

THE ITALIAN CONNECTION

"We'll make you A Deal you can't refuse"

GIFEMME - Cranksets, Hub, Factory Number Plates
HUS - Hub, HUSMA - Chain Ring
OLEMTE - Seat, Jet, CINELLI - Spoke
CAMPANOLIC - Cranksets & Hub
Parodymatic Spokes

Order Now! The Team Chicago Outfit
Olefinium Crankset, 3/32 S&S Sport Chain, Sun Tour 3/32 Free Wheel, 18 Crm Factory Plate \$65.85
(All imports unless otherwise noted Chain Ring FREE please state your state.)

TEAM CHICAGO
4846 N. Ripstick Ave. • Chicago, IL 60630 • (312) 726-2115
Dealers Inquiries Invited
Send for our catalog and Prices

ABA/RALEIGH WINTERALS
February 17, 1980
CHANDLER, ARIZONA
PRO PURSE: \$1000

BACK ISSUES

Enclose \$1.50 plus 50¢ postage and handling for each copy ordered

PLEASE CHECK BOX NEXT TO EACH COPY DESIRED.
(Copies not listed are sold out.)

<input type="checkbox"/> FEBRUARY/MARCH 77	<input type="checkbox"/> JULY 79	Name _____
<input type="checkbox"/> DECEMBER 77	<input type="checkbox"/> AUGUST 79	Address _____
<input type="checkbox"/> AUGUST 79	<input type="checkbox"/> SEPTEMBER 79	City _____
<input type="checkbox"/> MAY 79	<input type="checkbox"/> OCTOBER 79	State _____
<input type="checkbox"/> JUNE 79		Zip _____

Mail to: BICYCLE MOTOCROSS ACTION, P.O. Box 5277, Torrance, CA 90510

ODDS & ENDOS



Throughout BMX history it has been said of the very best sidehack teams:

"They got one of their oars out of the water."
 "They're not playin' with a full deck."

"They're a couple bricks short of a load."
 "They're out of their tree."

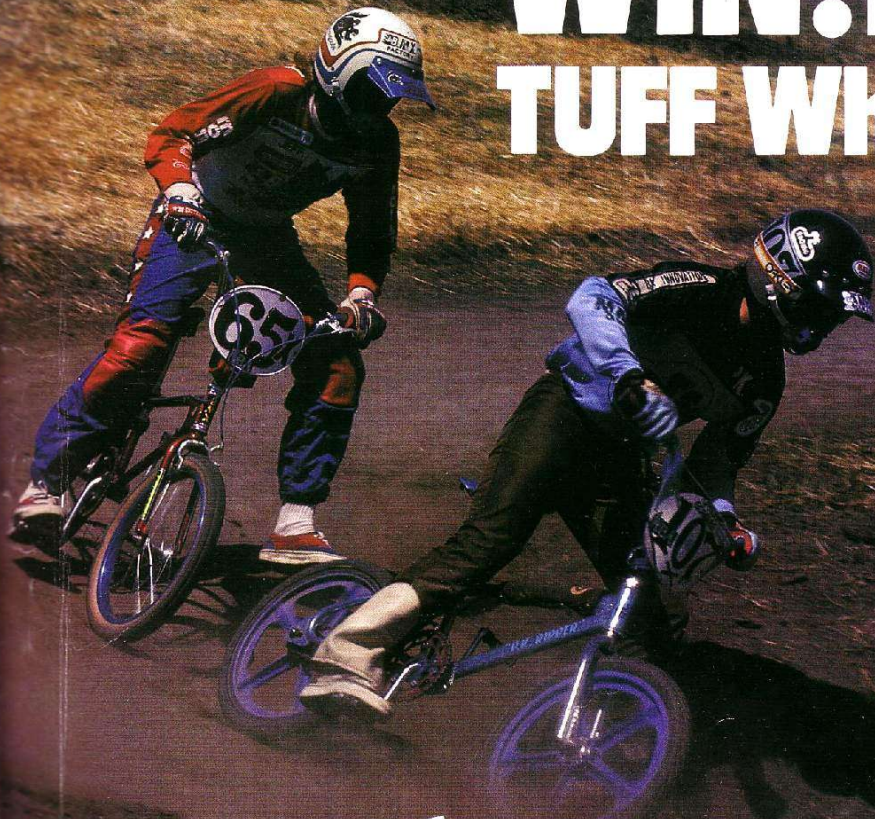
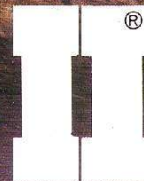
These things were said of Palfreyman and Takahashi; they were said of the Red Baron and Steve Ruiz; and they are being said of the current leaders of the pack, Clopton and Braseny... or as they are more affectionately known, Push and Pedal.

Now far be it from us to contradict wisdom that has persisted throughout history, but we would like to add that besides being whacko, sidehackers are among the most flamboyant people in the sport, they are ruggedly individual even though part of a tight team, and they are the unsung heroes of BMX. The coverage they receive is in no way proportional to the excitement, action, color, and class they provide the spectators.

So, even though we're poking fun at David "Push" Clopton and Robert "Pedal" Braseny, our hats are off to these guys and all the sidehackers who add so much to the sport of BMX.

When the competition gets heavy...

WIN! with NEW TUFF Wheel



RIDE WITH A WINNER!

SKYWAY DEVELOPED TUFF WHEEL II® to meet the ever increasing demand for a lightweight free wheel. TUFF WHEEL II® is lighter, yet offers the same unsurpassed impact resistance as the original TUFF WHEEL®.

The front wheel uses the Sun Tour heavy duty 3/8" front hub. The rear wheel is available with the Sun Tour coaster brake or the Sun Tour free hub. Also available is SKYWAY'S TUFF PADS developed for precise braking on the TUFF WHEEL II® made from ST Zytel nylon®.

For more information contact your local BMX Dealer

SKYWAY
RECREATION PRODUCTS

4451 Caterpillar Road Redding, California, 96001

SCHWINN®

... The Sting™ is available as a frameset ... same new Tri-Oval frame; frame weighs 3 3/4 lbs., same new tapered front fork ... add the goodies yourself!



FEATURING THE EXCLUSIVE SCHWINN TRI-OVAL BMX FRAME!



Tri-Oval construction with expanded oval shape means more strength where the stress is greatest.



Expanded oval chrome-moly tubing provides stronger welds, more welding surface where you need it the most.

Schwinn's designed the big ride that'll burn up the tracks all over the circuit ... They started with a whole new concept in tubing—chrome-moly throughout ... and expanded oval shaped where the strength is needed. Round in low stress areas to reduce weight. More weld area at the head tube. Butted tubing, too, with thicker walls at tube ends where stress is high ... and if that's not enough, the frame lines are new. Longer head tube. More distance between top and bottom joints for increased leverage to reduce the load on the tubes and the radial load on the head bearings.

The Sting ... the best the state-of-the-art can produce. Every detail of this extraordinary BMX competition bike has been designed for winning ... new Tri-Oval frame design, a new tapered fork design that cancels out the competition ... A new BMX Team Schwinn crankset ... aluminum forged seat post clamps. Schwinn's new forged aluminum handlebar stem, and your favorite Oury grips ... chrome-moly spindles in the pedals. Tired of talking? Tired of running with the pack? Want to get up and out? Ride the Schwinn Sting!

SCHWINN®

1856 N. Kostner Ave., Chicago, IL., 60639