



MT RACING SILVERFOX

How to out-fox the competition for under \$200

BMX PLUS!



MT is getting deadly serious about its racing and its race bikes. As guest tester for the SilverFox, we decided to bring along one of its newest race team members, "Wailin' Mahlon Abrams. This guy rips!

□ Let's take a trip back in time. Back to January 1984. That was the month we tested for the first time a bike manufactured in Taiwan by a new company called Ming Tien Hang Corporation. The bike was their top of the line, called the AeroPro. In a nutshell, it featured aerodynamic styling, well-thought-out componentry, and quality we simply never expected from Taiwan. For a reasonable \$350, the AeroPro was a heck of a bike for the price. Besides being pleasantly surprised, we began to notice a general change for the better in Taiwanese BMX equipment. And, in

fact, since that time, many top U.S. manufacturers have been equally impressed with the increased quality and have seen fit to add Taiwanese-built bikes to their line. RedLine, Hutch, Diamond Back, Kuwahara and Mongoose were just a few of the big names to nod their approval. Meanwhile, it was business as usual for the Ming Tien Hang Corporation, better known as MT Racing. They continued to refine their line of Taiwanese BMXers. But could they hold their edge against the onslaught of U.S.-sold, Taiwanese-built BMXers? Good question.

WELCOME TO THE SILVERFOX

MT Racing's answer to the "best-buy," under-\$200, entry-level racer is called the SilverFox. It features an all-chromoly frame and fork outfitted with select Taiwanese componentry. If you're looking for name-brand or buzzword components, look elsewhere. With the exception of the SilverFox's SunTour freewheel, chances are you won't recognize any of the names on the spec sheet.

FOXY FRAME AND FORK

MT offers the SilverFox in either chrome or white frame and fork. We

the Rad Squad

If you want to be radical, you've got to look radical, and one of these BMX Plus! shirts or jerseys will definitely do it for you.

BMX PLUS! T-SHIRTS

The ultimate in casual wear. Our pre-shrunk, 100% cotton, short-sleeved T-shirt will put you in front of the pack every time. White shirt comes with bold, four-color BMX Plus! graphics—small logo on front, large logo on back. Sizes are Boys' S, M, L, and Men's S, M, L, and XL—\$8.50

BMX PLUS! BUTTON-COLLAR KNIT SHIRTS

Our top-of-the-line, short-sleeved knit shirt will mark you as a BMXer with taste and sartorial savoir-faire. This 100% cotton shirt comes with a small but classy BMX Plus! emblem on the chest. Sizes: Boys' S, M, L, and Men's S, M, L, and XL—\$19.50



BMX PLUS! COTTON JERSEY

This all-cotton jersey will make you look like an official BMX Plus! test rider! Full four-color BMX Plus! graphics appear on front, back, and sleeves. Sizes: Boys' S, M, L, and Men's S, M, L, and XL—\$16.50

BMX PLUS! VENTED RACING JERSEY

This is the ultimate in track apparel. We can almost guarantee that you'll be a better rider once you put one of these on. Vented poly/cotton blend jersey has sewn-in elbow pads and brilliant BMX Plus! graphics. Sizes: Boys' S, M, L, and Men's S, M, L, and XL—\$19.50



BMX PLUS!

Mail to: PLUS PRODUCTS, INC., Dept. X, P.O. Box 9501
Mission Hills, CA 91345-9501

QTY.	ITEM	SIZE	PRICE

California residents add 6½% sales tax.
Add \$2.00 postage and handling for each item ordered. Foreign orders add \$4.50 postage and handling for each item ordered.

BMX10-4

TOTAL

Name _____
Address _____
City/State/Zip _____
I'm sending:
☐ Money Order (no delay) ☐ Check (30 days)
Charge to my: ☐ MasterCard ☐ VISA
Exp. Date _____
Card # _____
Signature _____

SILVERFOX

"Wallin'" Mahlon was pleasantly surprised by the SilverFox's performance. For beginners and novices, the SilverFox delivers! ▶

chose their "SW" model with the all-white frame and fork complete with chrome-and-black componentry. Once it was assembled, we took some time to scrutinize the frame and fork fabrication. Here's what we found:

Weld quality, tube fit, overall fabrication and finish were quite good. Remember, this thing retails for right around \$200, so don't expect absolute perfection. For this price range we all felt that MT had done a very good job indeed. Nice work.

On the other hand, we just couldn't help but nit-pick. Like the SilverFox's forks. Nice work all the way down to the miter-cut bottoms. Then MT sloppily capped them off with some stamped-out, tacked-on plates.

Also, we found the rear drops to be too short to be of any use to racers. Any gear changing will require the chain to be lengthened or shortened accordingly. And that's a hassle. Plus, the rear stays weren't capped where they meet the drops. But other than that, the SilverFox chassis is a winner. Good work, MT.

ON-TRACK PERFORMANCE

Since we already pointed out that much of the componentry on the SilverFox isn't familiar, brand-name stuff, we'll save the parts rundown for the specs box and move on to our riding impression.

First thing you'll notice after swinging a leg over the SilverFox is that unlike many of today's under-\$200, entry-level bikes, the MT is quite roomy. The frame is a lower profile which drops the top tube about an inch lower than, let's say, the RedLine 500a. This coupled with a 71-degree seat-tube angle gives the feeling of a long and low bike. But after checking the specs and finding a modest 36½-inch wheelbase and average 11½-inch bottom-bracket height, you'll find that the SilverFox isn't really as long and low as it feels.

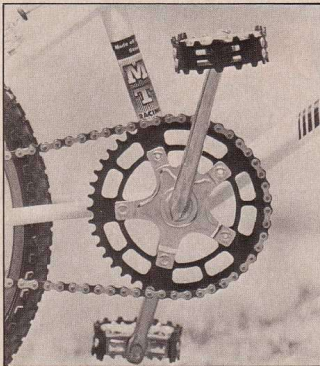
The ergonomics on the SilverFox seem to favor riders from 12 to 15 years of age. With its 175mm cranks, short offset stem and eight-inch-tall by 25-inch-wide bars, the SilverFox feels great. Good pull out of the gate. Well centered through the turns. Well balanced in the air.

The overall weight on the SilverFox is 25 pounds (complete with pads but minus plate and C.P.S.C. equipment),

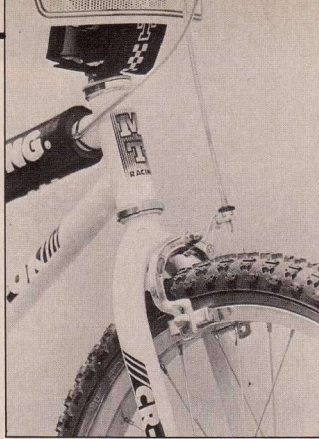
Handling and steering best suit novice-level racers. It's nimble and quick without being too skittish. In berms it's Fun City! ▶



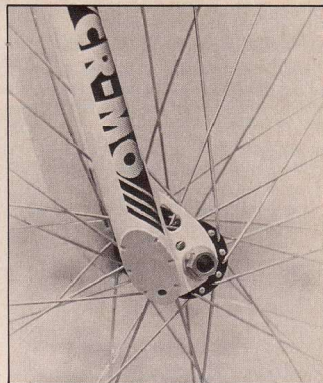
SILVERFOX



At first glance you'd swear that the SilverFox's pedals are Sun-Tour's XC series. Not so. While the design is similar, the cages are not replaceable. Good stuff, though.



Up front you'll find a Chang Star caliper. With a bit of dialing in and some accessory pads, they'll work. Tires are Cheng Shins: low bucks, high traction.



MT's frame-and-fork fabrication was spot-on. The only beef we had was the stamped-out-looking caps on the fork legs. Other than that, the SilverFox chassis gets the thumbs-up.

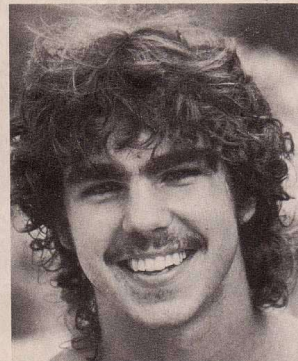


BMX PLUS!

1. Bike: MT Racing SilverFox, 20-inch complete bike.
2. Age range: 12 to 15 years old.
3. Country of origin: Taiwan.
4. Intended use: Street/trail, entry-level racer.
5. Wheelbase: 36" to 36 3/4".
6. Bottom-bracket height: 11 1/4".
7. Chain stay length: 15 1/4".
8. Steering head angle: 72.5°.
9. Seat tube angle: 71°.
10. Frame: MT Racing, 4130 chromoly throughout. Features: 1 1/8" top tube, 1 1/4" down tube, 4" head tube, American bottom bracket, white finish.
11. Fork: MT Racing, 4130 chromoly throughout. Features: 1 1/8" diameter legs, leading-axle design, drilled for caliper, white finish.
12. Rims: Alloy, 20" x 1.75", 36-hole.
13. Spokes: 36/080 cadmium plated.
14. Hubs: Sui-Yuan, alloy, low-flange, loose ball.
15. Tires: Cheng Shin skinwalls, 20" x 1.75" rear, 20" x 2.125" front, 35 psi.
16. Cranks: One-piece steel, heat treated, 175mm.
17. Pedals: Wellgo LU-393 alloy, cage design, chromoly shaft.
18. Chain: TYC 1/2" x 1/8".
19. Bottom bracket: Steel, retainered ball.
20. Front sprocket: Alloy, 44T.
21. Freewheel: SunTour 16T.
22. Brakes: Chang Star 900 calipers and levers, front and rear.
23. Headset: Steel, retainered ball.
24. Stem: Alloy, 4-bolt with chromoly shaft.
25. Handlebars: MT high-tensile steel, 8" rise x 25" width.
26. Grips: Fuan vinyl.
27. Seating: Viscount Dyna plastic saddle, fluted chromoly seatpost, alloy post clamp.
28. Miscellaneous: MT Racing pad set, C.P.S.C. safety equipment.
29. Overall weight: 25 lbs. with pads and without C.P.S.C. equipment.
30. Approximate retail price: \$199.
31. For additional information contact: Ming Tien Hang Corporation, 12F-1 Sinyi Road, Sec. 2, Taipei 100 Taiwan, Telex: 24571 MINGTIEN.

F

FRESHOUR



TIM "T.K." KAKOURIS - 17 Expert
N.B.L. National #2
FRESHOUR FACTORY RIDER

Freshour Cycle has proven time after time that you can ride better on a Freshour "T.K." Signature chassis set (frame, fork, handlebar and seat post) custombuilt to fit your size. I know because I raced one to N.B.L. National #2 in 1983.

Freshour Cycle has used a fresh new approach to competition BMX with two new generation chassis sets, the T.K. Lite and the T.K. Pro.

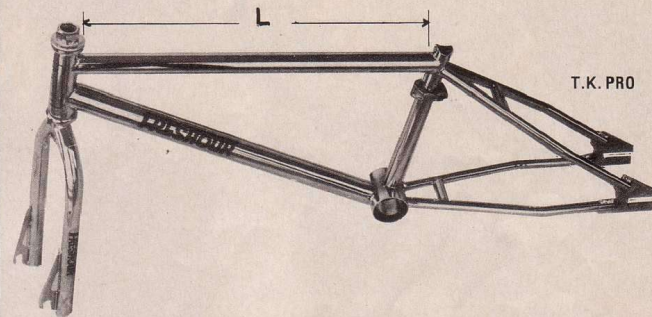
The underslung seat post clamp lowers the end weight when sitting down in a curve. The leading axle fork legs extend below the axle mount for a more stable ride. The large diameter 1 3/8" down tube reduces flex, the short rear end, the location of the crank and head tube, the perfect blend of angles, the power position handlebars, and custombuilt to fit your size, makes the "RIGHT STUFF" for winning races.

These lightweight frame sets are 100% chromoly, including the dropouts. They are handcrafted by Freshour Cycle in their shop from aircraft quality 4130 chromoly tubing by True Temper® with a certified 100,000 p.s.i. tensile strength. They are welded by certified heliac welders and plated with a show-chrome finish.

The Freshour "T.K.'s" were developed and tested on N.B.L. and A.B.A. tracks from coast to coast by skilled national riders. They represent many years of BMX experience and hard work that all comes together "when the gate drops." More snap, less flex, more stability gives you the confidence to "GO FOR IT."

I DARE YOU, the serious racer, to let Freshour Cycle custom build a chassis set to fit your size and find out how good you really are.

Tim "T.K." Kakouris



CUSTOM BUILT

1. - ☐ T.K. LITE Frame 3 lb. 10 oz. - Fork 1 lb. 12 oz. \$189.00
SUGGESTED COMBINATIONS - CIRCLE DESIRED SIZES

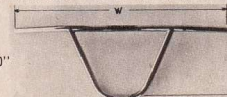
	8-10 yrs.	10-12 yrs.	12-14 yrs.	14-16 yrs.
L = Length of top tube	16 1/2"	17"	17 1/2"	18"
R = Rise of handlebar	6-6 1/2"	6 1/2-7"	7 1/2-8"	8-8 1/2"

2. - ☐ T.K. PRO Frame 3 lb. 14 oz. - Fork 1 lb. 12 oz. \$196.00
SUGGESTED COMBINATIONS - CIRCLE DESIRED SIZES

	12-14 yrs.	14-16 yrs.	16-18 yrs.	Over 6' Tall
L = Length of top tube	17 1/2"	18"	18 1/2"	19"
R = Rise of handlebar	7 1/2-8"	8-8 1/2"	8 1/2-9"	9-9 1/2-10"

3. - ☐ T.K. HANDLEBAR \$28.00
CIRCLE DESIRED SIZES

W = Width - 26" 27" 28"
R = Rise - 6" 6 1/2" 7" 7 1/2" 8" 8 1/2" 9" 9 1/2" 10"



4. - ☐ T.K. CHROMOLY SEAT POST \$6.00
CHECK ONE - ☐ 7/8" X 14" ☐ 7/8" X 16"

5. - ☐ FRAME I.D. NUMBER OR LETTERS - stamped in drop out | | | | |

6. - ☐ COLOR OF DECALS
CHECK ONE - ☐ RED ☐ BLUE ☐ BLACK

7. - ☐ PAD SET \$12.00
CHECK ONE - ☐ RED ☐ BLUE ☐ BLACK

8. - ORDER DATE _____
AMOUNT OF ORDER \$ _____
MO. RES. ADD 5.625% Sales Tax \$ _____
U.P.S. CHARGE - EA. SET \$ \$4.00
TOTAL ORDER \$ _____
Name _____
Address _____
City, State, Zip _____
Phone _____

9. - PAYMENT
DO NOT SEND CURRENCY - NO C.O.D. PLEASE
☐ MONEY ORDER/CASHIERS CHECK
☐ VISA ☐ MASTERCARD Exp. Date _____
Card No. _____
Signature of Card Holder _____
Prices and specifications subject to change without notice.

FRESHOUR
FRESHOUR CYCLE COMPANY
315 S. Main • Skidmore, MO 63801
TELEPHONE: 314-471-3543 or 314-471-3548
TEAM CO-SPONSORS **TRUE TEMPER**
VANS **ECHO**